

PREMIUM LIST



THURSDAY EVENTS

- Southern California Beagle Club
- Southern California Ibizan Hound Club
- Tri-Valley Working Dog Club of Pinon Hills
- Cavalier King Charles Spaniel Club of Southern California
- City of Angels Pomeranian Club
- Southern California Bouvier des Flandres Club

SATURDAY EVENTS

- Dalmatian Club of Southern California

Rancho Mission Viejo Riding Park

30753 Avenida La Pata, San Juan Capistrano, CA 92675

MISSION CIRCUIT

Entries Close: Noon Wednesday May 6, 2026 PT

IMPORTANT NOTICE

Mail Entries with Fees to Jack Bradshaw, 320 Maple Avenue, Torrance, CA 90503

Make checks payable to Jack Bradshaw

FAX: (323) 727-2949 E-MAIL ENTRIES: www.jbradshaw.com

For entries made online there will be a service fee of \$5.00 per dog per show.

There will be a \$4.00 service fee if entries are cancelled for any reason per dog per show.

These service fees are non-refundable.

Include MasterCard, Visa or American Express number & expiration date.

There will be a \$5.00 convenience fee charged per dog per show when using a credit card for payment of hand delivered or mailed in entries. Fax machines are available 24 hours a day.

Hand Deliveries - 320 Maple Avenue, Torrance, CA 90503

All entries with fees must be in the office of the Superintendent not later than

NOON WEDNESDAY, MAY 6, 2026 PT

Or by the limit of 1800 entries to include conformation, juniors for the all breed shows Friday - Monday

After which time no entries may be accepted, cancelled, changed, substituted, corrected, completed, or signed and no entry fees refunded. Any change or cancellation must be made in writing and received prior to closing, except as provided for in Chapter 11, Section 6 of the American Kennel Club Dog Show Rules.

Fax entries that are received incomplete or unable to read will not be accepted. The proof of transmission is not proof for verifying faxed entries. **PLEASE DO NOT WAIT UNTIL THE CLOSE OF ENTRY DAY TO FAX OR EMAIL YOUR ENTRIES. IF YOU FAX OR EMAIL ON A CLOSE OF ENTRY DAY, PLEASE SUBMIT PRIOR TO 9:00 AM.**

ENTRY FEES

First Entry of a dog at this show*	\$39.00
Each additional entry of the same dog	31.00
Puppy Class 6-9 and 9-12, Bred by Exhibitor Class.....	31.00
Junior Showmanship	20.00
Junior Showmanship, Thursday at Tri-Valley Working.....	FREE
4-6 Months BPUP Fri San Gabriel VKC, Sat South Bay KC.....	20.00
4-6 Months BPUP Thurs Beagles, Thurs Bouviers	10.00
Thursday-Bouvier sweepstakes or veteran sweepstakes	20.00
Thursday-Beagles #1 show sweeps or veteran sweeps	20.00
Thursday-Ibizan sweepstakes or veteran sweepstakes (both shows)	20.00
Thursday-Working #1 show sweeps or veteran sweeps	20.00
Thursday-Cavalier sweeps or veteran sweeps at specialty.....	25.00
Thursday-Pomeranian sweepstakes or veteran sweepstakes (both shows)	25.00
Saturday-Dalmatian sweepstakes or veteran sweepstakes at specialty	20.00

*An AKC Event Fee of \$4.50 is required for each entry in an event. BPUP, Open Shows \$3.00 per entry. There is no Event Fee for Junior Showmanship, Sweepstakes, Brace/Team, Multi-Dog Classes, or Special Attractions.

PREMIUM LIST

SAN GABRIEL VALLEY KENNEL CLUB

Friday, May 22, 2026

SOUTH BAY KENNEL CLUB

Saturday, May 23, 2026

ANTELOPE VALLEY KENNEL CLUB

Sunday, May 24, 2026

LOS ENCINOS KENNEL CLUB

Monday, May 25, 2026

MISSION CIRCUIT CHAIRMEN

- Loran Morgan Cluster Chair
- Dick Greaver..... Assistant Cluster Chair
- Loran Morgan Design and Planning
- Loran Morgan, Dick Greaver Special Events Coordinator
- Loran Morgan, Dick Greaver Event Planning
- Dorinne Waterman..... Catalog Advertising
- Loran Morgan Publicity and Sponsors
- Dorinne Waterman & Bonnie Buchanon..... Vendor Chairmen
(951) 420 2887 Email - dorinne25@gmail.com
- Ron Mattson Overnight Parking
- Dorinne Waterman..... Independent Specialty Coordinator

COMBINED INFORMATION

Mission Park Pet Hospital	Rise 24 Hour Emergency
Dr. Tiffany Thompson	24721 Alicia Parkway
27672 Crown Valley Parkway	Laguna Hills, CA 92653
Mission Viejo, CA 92691	949-787-7473
949-364-2042	

Exhibitors should follow their veterinarians' recommendation to assure their dogs are free of internal and external parasites, any communicable diseases, and have appropriate vaccinations.

- Bill Vale Announcer
- Lafayette McGowan..... Chief Ring Steward
- John Kunipo..... Chief Obedience and Rally Ring Steward
- Bettina Bienefeld Bestinshowphoto.com Photographers
- Bob Kohler bobkohlerphoto@me.com Photographers

Only photographers listed above will be allowed in the rings.

Ringside photographers Ryan Michaud calicoast.com; Eddie Baute Abu-Amsha myangelstudio.com
Ringside (Unofficial Photographers) must identify themselves to the Cluster Chair setr@aol.com

Superintendents

Jack Bradshaw Dog Show Superintendents/Est. 1898

320 Maple Avenue, Torrance, CA 90503

Telephone: (323) 727-0136, FAX: (323) 727-2949; WEB: www.jbradshaw.com

Susan Bradshaw MacLyman / Keith MacLyman

Julie Bradshaw-Draper / Eloise O'Donnell / John Bradshaw

One or more of the above superintendents will attend the show.

OTHER EVENTS ON THE SAME GROUNDS

THURSDAY EVENTS

Southern California Beagle Club
Southern California Ibizan Hound Club
Tri-Valley Working Dog Club of Pinon Hills
Cavalier King Charles Spaniel Club of Southern California
City of Angels Pomeranian Club
Southern California Bouvier des Flandres Club

SATURDAY EVENTS

Dalmatian Club of Southern California

All of the above events Show superintendent: Jack Bradshaw Dog Shows www.jbradshaw.com

**Listed below are the designated specialties, supported entries,
sweepstakes and veteran sweepstakes in catalog order**

DESIGNATED SPECIALTY

Chow Fanciers Association of Southern California, Saturday

SUPPORTED ENTRY

Great Western Flat Coated Retriever Club, daily
Southern California Beagle Club, daily
Southern California Ibizan Hound Club
American Bullmastiff Association, daily
Great Dane Club of California, daily
City of Angels Pomeranian Club, daily
Chow Fanciers Association of Southern California, Sunday
Shiba Inu Fanciers of Southern California, Saturday and Sunday

On Friday, Sunday, Monday The Great Western Flat Coated Retriever Club supports the entry and offers breed motif trophies for BOB, BOS, Winners.

On Saturday, The Great Western Flat Coated Retriever Club will support the entries of Flat Coated Retrievers on Saturday.

The GWFCR Club trophy is an original design by award winning artist, Ann Kilminster, the bronze sculpture is mounted on a wood base. For permanent possession, The trophy must be won three times by the same owner, not necessarily with the same dog, and not necessarily at consecutive shows. The trophy will remain in possession of the Great Western Flat Coated Retriever Club until such time.

On Saturday, The Great Western Flat Coated Retriever Club supports the entry and offers breed motif trophies for BOB, BOS, Winners, Select, Reserve.

The Southern California Beagle Club will support the entry on Friday, Saturday, Sunday and Monday for both 13" Beagles and 15" Beagles.

The Southern California Ibizan Hound Club will support the entry Friday, Saturday, Sunday and Monday and offers medallions for BOB, BOW, BOS.

The American Bullmastiff Association will support the entry Friday, Saturday, Sunday and Monday. The California Bullmastiff Fanciers will offer dog items and rosettes for Best of Breed, Best of Opposite and Best of Winners.

The Cavalier King Charles Spaniel Club of Southern California will support the entry Friday, Saturday, Sunday and Monday and offers breed related items for BOB, BOW, BOS, Winners, Select.

The City of Angels Pomeranian Club will support the entry Friday, Saturday, Sunday and Monday.

The Chow Fanciers Association of Southern California will consider the classes at this show as its specialty show on Saturday

Officers

President – Susan Avila

Vice President – Jennette Lugmoc

Treasurer – Lisa Gillespie

Secretary – Joyce Miller, 356 Vineland Av, La Puente, CA 91746 626-330-1720, cell 818-416-5640

Regular Classes - Rosette ribbons to be provided by CFASC for BOB, BOS, BOW, WD, WB, SD, SB, RWD/RWB, AOM

Best of Breed – Large Chow motif garden planter, Bronze Medallion & \$60 gift certificate towards a full-page ad in Chow Life offered by the Chow Chow Club, Inc.

Best of Opposite – Medium Chow motif garden planter, Bronze Medallion & \$60 gift certificate towards a full-page ad in Chow Life offered by the Chow Chow Club, Inc.

Best of Winners – Medium Chow motif garden planter

Winners Dog /Bitch – Large grooming case, \$50 gift certificate towards a full-page ad in Chow Life offered by the Chow Chow Club, Inc.

Select Dog/Bitch – Chow motif paper towel holder

Reserve Winners Dog/Bitch – Chow motif latte mug by Artist Sandra Miller

Awards of Merit (2) – Chow motif can koozie by Artist Sandra Miller

Regular Classes

1st place in each class – Chow Motif Candle by Artist Sandra Miller

2nd through 4th place in each class – Chow Motif Note Card Set by Artist Kip Kopatch

The Chow Fanciers Association of Southern California will support the entry on Sunday and offers:

Best of Breed - Chow motif windchime

Best Opposite – Chow motif wooden leash holder

Best of Winners – Chow motif glass tumbler by Artist Sandra Miller

Winners Dog/Bitch – Chow motif sun catcher

Select Dog/Bitch - Chow motif latte mug by Artist Sandra Miller

Shiba Inu Fanciers of Southern California will support the entry on Saturday and Sunday and offers:

Best of Breed, Saturday – Shiba Spam Musubi Basket donated by Molly Aiken and Allan Childers

Best of Breed, Sunday – Local Artisan Gift Basket donated by Molly Aiken and Allan Childers

Best of Opposite Sex, Best of Winners, Winners Dog, Winners Bitch – Shiba related items donated by Shiba Inu Fanciers of Southern California

**102nd All Breed Dog Show, Obedience Trial & Rally Trial
of the
SAN GABRIEL VALLEY KENNEL CLUB, INC.**

(Member of the American Kennel Club)

Rancho Mission Viejo Riding Park
30753 Avenida La Pata, San Juan Capistrano, CA 92675

FRIDAY, MAY 22, 2026

Unbenched – Outdoors - Show Hours: 7 a.m. to 8 p.m.

OFFICERS

Stephen M Cabral President
Jennifer Roberts-Espinosa Vice-President
Bonnie Watts Treasurer
Jennifer Cabral Secretary

PO Box 1891 Duarte, CA 91009

No dogs owned or co-owned by members of the S.G.V.K.C., show photographers, ring stewards or members of their immediate family and or household will be eligible for entry at this show.

SHOW COMMITTEE

Mr. Stephen M Cabral, Show Chairman
P.O. Box 1891 Duarte, CA 91009
SanGabrielValleyKC@gmail.com
626-215-9040

and Officers and Directors of the Club

SHOW COMMITTEE

Maureen Higgins Obedience and Rally Chairman
SGVKC Club Members Grounds
Kay Robert & Jennifer Cabral Trophies
Bonnie Watts, Catalogue Sales
Stephen M Cabral Junior Showmanship
Jennifer Cabral Day of Show Hospitality, Judges Hospitality
SGVKC Club Members Ringside Hospitality



CERTIFICATION

Permission has been granted by the American Kennel Club for the holding of this event under American Kennel Club rules and regulations. Sheila H. Goffe, Executive Secretary

TROPHIES

The San Gabriel Valley Kennel Club wishes to thank all clubs, friends and members for their generous support of the trophy list. All trophies will be cash, glass, silverplate, crystal, pottery or pewter unless otherwise stated.

Best In Show offered by The San Gabriel Valley Kennel Club

Reserve Best In Show offered by The San Gabriel Valley Kennel Club

Variety Group Placements offered by The San Gabriel Valley Kennel Club

TriValley Working Dog Club of Pinon Hills offers a Gift Basket for First place Working Group.

SPORTING

ENGLISH SPRINGER SPANIELS

Best of Breed – offered by Bonnie Watts

VIZSLAS

Best of Breed – Offered by Stephen M Cabral

HOUNDS

BEAGLES

Best of Variety – offered by Jennifer Cabral

WORKING

PORTUGUESE WATER DOGS

Best of Breed – Offered by Nancy Leon

TOY

CAVALIER KENG CHARLES SPANIEL

Best of Breed - Offered by Jennifer Roberts-Espinosa

NON-SPORTING

BICHON FRISE

Best of Breed - Offered by Dorinne Waterman

JUNIOR SHOWMANSHIP

SGVVC welcomes Junior Showmanship Competition and offers a trophy for Best Junior Handler and Reserve Best Junior Handler.

OBEDIENCE

Qualifying score required for all prizes

High In Trial – Trophy prepared by Kay Robert

Highest Combined Score – Trophy prepared by Kay Robert

High Combined in Rally – Trophy prepared by Kay Robert

**All Breed Dog Show, Obedience Trial & Rally Trial
of the
SOUTH BAY KENNEL CLUB**

(Licensed by the American Kennel Club)

Rancho Mission Viejo Riding Park
30753 Avenida La Pata, San Juan Capistrano, CA 92675

SATURDAY, MAY 23, 2026

Unbenched – Outdoors - Show Hours: 7 a.m. to 8 p.m.

OFFICERS

Mr. John Kunipo President
Ms. Toni Woods Vice President
Mr. Larry Kittiver Treasurer
Ms. Emily Montoya Secretary

10107 Brenda Ave, Buena Park, CA. 90620

SHOW COMMITTEE

Lafayette McGowan – Chairman
1535 E 16th St, Long Beach, CA 90813 lmcgowan09@yahoo.com (562) 619-0465
John Kunipo, Assistant Show Chairman johnkunipo@yahoo.com (562) 336-4880
and all officers and directors of the South Bay Kennel Club, Inc.

DIRECTORS

Mike Lekov, Tami Kittiver, Cheryl Head, Lafayette McGowan, Tony Zambrano

COMMITTEE CHAIRMEN

Ms. Jennifer Stampfl Concessions
Mr. Tony Zambrano & Mrs. Jackie Zambrano Catalog Sales
Ms. Jeannie Love Trophy Chairman
Ms. Emily Montoya Hospitality Coordinator
Mr. John Kunipo Chief Obedience and Rally Ring Steward
Mr. Lafayette McGowan Chief Ring Steward

No officer or director of the South Bay Kennel Club shall enter or handle a dog in competition at this event,
nor shall any dog owned or co-owned by an officer or director of this club be eligible for entry in this event.



CERTIFICATION

Permission has been granted by the American Kennel Club for the holding of this event under
American Kennel Club rules and regulations. Sheila H. Goffe, Executive Secretary

TROPHIES

All trophies must be claimed on the day of the show. None will be mailed.

Variety Groups-- The following donors offer a Trophy for first in each Group.

The South Bay Kennel Club offers trophies and rosettes for the following:

Best In Show

Reserve Best In Show

Each placement in the Variety Groups & NOHS Variety Groups

TriValley Working Dog Club of Pinon Hills offers a Gift Basket for First place Working Group.

Best Junior Handler--a gift card is offered by South Bay Kennel Club, Inc.

High In Trial Obedience - Trophy is offered by South Bay Kennel Club, Inc.

**All Breed Dog Show, Obedience Trial & Rally Trial
of the
ANTELOPE VALLEY KENNEL CLUB, INC.**

(Member of the American Kennel Club)
Rancho Mission Viejo Riding Park
30753 Avenida La Pata, San Juan Capistrano, CA 92675

SUNDAY, MAY 24, 2026

Unbenched – Outdoors - Show Hours: 7 a.m. to 8 p.m.

OFFICERS

Dick Greaver..... President
Cara Jensen Vice-President
Morgan Betts-Wojtaszek..... Treasurer
Alison Betts Recording Secretary
Diana Heathcote Corresponding Secretary

AVKC

P.O. Box 4626, Lancaster, CA 93539
www.AntelopeValleyKC.org

DIRECTORS

Pilar Kuhn, Sean Heathcote, Suzanne Leroy, Bob Benedict

SHOW COMMITTEE

Dick Greaver Show Chair, Cara Jensen Co-Show Chair
40058 17th West, Palmdale, CA 93551, 805-377-8035, greaver1@live.com
Cara Jensen, Obedience and Rally Chairman
and all Officers and Directors

COMMITTEE CHAIRMEN

Bob Benedict and Cara Jensen..... Catalogs
Alison Betts & Morgan Betts-Wojtaszek Trophies
Bob Benedict and Cara Jensen..... Ring Hospitality
Bob Benedict and Cara Jensen..... AM Hospitality
Cara Jensen Judges Lunch and Group Hospitality
Bob Benedict Properties



CERTIFICATION

Permission has been granted by the American Kennel Club for the holding of this event under American Kennel Club rules and regulations. Sheila H. Goffe, Executive Secretary

Antelope Valley Kennel Club is a non-profit organization.

We are proud to contribute funds to the following organizations:

Antelope Valley 4-H
University of California Davis School of Veterinary Medicine Scholarship
Search Dog Foundation, Inc.
AKC Health Foundation
California Federation of Dog Clubs
Southern California Breeders & Kennel Owners Association

No dog owned or co-owned by the show chairman or president of the Antelope Valley Kennel Club or member of his/her immediate family will be eligible for entry at this show, nor will they handle dogs at this show.

TROPHIES

Antelope Valley Kennel Club wishes to thank all the clubs, friends, and members for their support to the trophy list. Trophies and medallions must be picked up the day of the show, none will be mailed. Groups, Best in Show and Reserve Best in Show will be presented in the Group Rings. High In Trial, High Combined Obedience, Rally High Combined & High Triple, Best Junior Showmanship and Reserve Best Junior Showmanship will be presented in their respective rings at the end of the competition.

BEST IN SHOW TROPHIES

*BEST IN SHOW - Pewter Plate, and Antelope Valley Kennel Club Apron and Tote offered by Sean and Diana Heathcote (Calikij Löwchen)

*RESERVE BEST IN SHOW - Pewter Plate offered by Antelope Valley Kennel Club

*BEST IN SHOW OWNER HANDLED - Pewter Plate, and Antelope Valley Kennel Club Tumbler offered by Stephanie Beck

*RESERVE BEST IN SHOW OWNER HANDLED - Pewter Plate offered by Antelope Valley Kennel Club

GROUP TROPHIES

Sporting Group - Antelope Valley Kennel Club towel offered by Antelope Valley Kennel Club

Hound Group - Antelope Valley Kennel Club towel offered by Antelope Valley Kennel Club

Working Group - Antelope Valley Kennel Club towel offered by Antelope Valley Kennel Club

Terrier Group - Antelope Valley Kennel Club towel offered by Antelope Valley Kennel Club

Toy Group - Antelope Valley Kennel Club towel offered by Antelope Valley Kennel Club

*Non-Sporting - Apron and Tote offered by Sean and Diana Heathcote (Calikij Löwchen), and Antelope Valley Kennel Club towel offered by Antelope Valley Kennel Club

Herding Group - Antelope Valley Kennel Club towel offered by Antelope Valley Kennel Club

The Antelope Valley Kennel Club offers an Antelope Valley Kennel Club Tote for all Owner Handled Group winners:

TriValley Working Dog Club of Pinon Hills offers a Gift Basket for First place Working Group.

BREED/VARIETY TROPHIES

The Antelope Valley Kennel Club offers a club medallion for Best of Breed/Variety and Best of Opposite Sex to Breed/Variety in each breed.

*CLUMBER SPANIELS - Breed Motif Rosette for Best of Breed, Best of Opposite Sex, Best of Winners, Winners Dog, and Winners Bitch. Offered by Greg and Bilinda Osburne (Clumburnes Clumber Spaniels)

* WEIMARANER - Best of Breed and Best of Opposite Sex - Wall Hanger; Best of Winners, Winners Dog, and Winners Bitch - Breed Motif Rosette. Offered by Brenda Barnett

* BOSTON TERRIER - Best of Breed - Welcome sign; Best of Opposite Sex, Best of Winners, Winners Dog, and Winners Bitch Breed Motif -Rosette. Offered by Laurel Dalire

*SCOTTISH TERRIERS - Breed Motif Spray Bottle for Best of Breed, Best of Opposite Sex, Best of Winners. Offered by Rod Ott and Pilar Kuhn (Bravo Scottish Terriers)

*SAMOYEDS - Breed Motif Spray Bottle for Best of Breed, Best of Opposite Sex, Best of Winners, Winners Dog, Winners Bitch, Select Dog, Select Bitch, and Best of Breed Owner Handled. Offered by Caryl Mercy (Emcee Samoyeds)

*BOUVIER des FLANDRES - Breed Motif Spray Bottle for Best of Breed, Best of Opposite Sex, and Best of Winners. Offered by Pilar Kuhn and Rod Ott (La Chanson Bouviers)

*FRENCH BULLDOG – Breed Motif Spray Bottle for Best of Breed, Best of Opposite Sex, and Best of Winners. Offered by Bob Benedict

JUNIOR HANDLER TROPHIES

*BEST JUNIOR HANDLER - \$50.00 Gift Certificate offered by Antelope Valley Kennel Club

*RESERVE BEST JUNIOR HANDLER - \$25.00 Gift Certificate offered by Antelope Valley Kennel Club

*PARTICIPATION AWARD - Offered by Irene Munoz (Avignon Ranch) to all Junior Handlers participating in Junior Showmanship Classes

OBEDIENCE TROPHIES

Qualifying scores are required for all prizes. Antelope Valley Kennel Club offers a Dark Green Ribbon to each dog making a qualifying score. Antelope Valley Kennel Club offers a Club Medallion for each dog completing a title at this show.

*HIGH IN TRIAL - Antelope Valley Kennel Club Tote offered by A Better Way Pet Care, Deborah Betts, Morgan Betts-Wojtaszek, and Alison Betts - In Memory of Dennis Betts

*HIGH COMBINED SCORE - Antelope Valley Kennel Club Towel offered by A Better Way Pet Care, Deborah Betts, Morgan Betts-Wojtaszek, and Alison Betts - In Memory of Dennis Betts

RALLY TROPHIES

Qualifying scores are required for all prizes. Antelope Valley Kennel club offers a Dark Green Ribbon to each dog making a qualifying score. Antelope Valley Kennel Club offers a Club Medallion for each dog completing a title at this show.

*RALLY HIGH COMBINED - Antelope Valley Kennel Club Tote offered by A Better Way Pet Care, Alison Betts & Morgan Betts-Wojtaszek

*RALLY TRIPLE QUALIFYING "SCORE - Antelope Valley Kennel Club Towel offered by A Better Way Pet Care, Alison Betts & Morgan Betts-Wojtaszek

**85th All Breed Dog Show, Obedience Trial & Rally Trial of the
LOS ENCINOS KENNEL CLUB**

(Member of the American Kennel Club)

www.lekc.org

Rancho Mission Viejo Riding Park
30753 Avenida La Pata, San Juan Capistrano, CA 92675

MONDAY, MAY 25, 2026

Unbenched – Outdoors - Show Hours: 7 a.m. to 8 p.m.

OFFICERS

President..... Loran Morgan
1st Vice-President..... Janice Anderson
2nd Vice-President..... Janet Georgeann
Treasurer Deborah Schuch
Recording Secretary..... Allison Voehringer
Corresponding Secretary Nancy Sumida

5656 North Briarwood Avenue, Fresno, CA 93711

AKC DELEGATE

Desmond Murphy

BOARD OF DIRECTORS

Steven Hamblin, David Powers

SHOW COMMITTEE

Loran Morgan, Show Chairman

3939 Nobel Drive, Apt. 147, San Diego, CA 92122 (323) 382-2828 setr@aol.com

Pauline Waterman, Assistant Show Chairman

Loran Morgan Obedience and Rally Chairman
and all Officers and Directors

Los Encinos Kennel Club is a non-profit organization.

We are proud to contribute to the following organizations:

Search Dog Foundation, Guide Dogs of America, Take the Lead

BENCH SHOW COMMITTEE

Loran Morgan, David Powers, Steve Hamblin

All Officers and Directors

COMMITTEES

Grounds David Powers
Trophies David Powers, Loran Morgan
Morning Hospitality Deborah Schuch
Group Hospitality Nancy Sumida
Decorations..... David Powers

**NO DOG OWNED OR CO/OWNED BY ANY MEMBER OF LOS ENCINOS KENNEL CLUB LISTED
ABOVE, PHOTOGRAPHERS OR MEMBER OF HIS/HER IMMEDIATE FAMILY WILL BE ELIGIBLE
FOR ENTRY AT THIS SHOW, NOR WILL THEY HANDLE DOGS AT THIS SHOW.**



CERTIFICATION

Permission has been granted by the American Kennel Club for the holding of this event under American Kennel Club rules and regulations. Sheila H. Goffe, Executive Secretary

LOS ENCINOS KENNEL CLUB TROPHIES

All trophies are offered by Los Encinos Kennel Club unless otherwise noted.

CHALLENGE AND MEMORIAL TROPHIES

All Challenge and Memorial Trophies to be won outright must be won three times by the same owner, not necessarily with the same dog nor at consecutive shows. All Challenge trophies remain in the custody of Los Encinos Kennel Club until retired.

BEST IN SHOW

The members of Los Encinos Kennel Club offer the following trophies:

THE BARU CHALLENGE TROPHY is offered by Los Encinos Kennel Club in memory of Barbara McCormick & Ruth E. Brown through the Los Encinos Kennel Club for competition at its shows only for Best in Show (Engraved SP 16" Revere Bowl on Wooden Base).

THE MINNARUTH MOTT MEMORIAL TROPHY, an Italian SP Footed Compote on Wooden Base, is offered by the Friends of Minnaruth Mott through Los Encinos Kennel Club for Best in Show.

THE BLACKWATCH CHALLENGE TROPHY, is offered in memory of Ch. Schlosshaus's Jo-Jo The Red, by Mr. & Mrs. William H. Cosby, Jr. and Capt. Jean L. Heath U.S.N. (Ret.) through the Los Encinos Kennel Club. The trophy is an 18" Antique SP Tray dated 1835 on a specially made Walnut Base.

THE SIERRA'S BRANDYWINE MEMORIAL CHALLENGE TROPHY is offered by Karen Burnside, in memory of Michael, through the Los Encinos Kennel Club for Best in Show. The trophy is a SP Punch Bowl with a Wood Storage Base.

HOUND GROUP

THE CAROL AND JERRY ESTERKIN CHALLENGE TROPHY is offered for First in the Hound Group. The trophy is a Bronze Afghan Sculpture on a wooden base.

TROPHIES

Best in Show, Best in Show Owner Handled – Large potted 8 inch Bromeliads Plant
Reserve Best in Show, Reserve Best in Show Owner Handled - Potted Bromeliad Plant
Variety Group 1 - Potted Bromeliad Plant
Owner Handled Group 1 - 4 inch Bromeliad Plant

Group Trophy Donors and NOHS Group Trophy Donors

Sporting Loran Morgan
Hound Janet Georgeanne
Working Nancy Sumida
Terrier Bonney Snyder
Toy Loran Morgan
Non Sporting Janice Anderson
Herding Deborah Schuch

TriValley Working Dog Club of Pinon Hills offers a Gift Basket for First place Working Group.

High in Trial - Bromeliad Plant
High Combined - Bromeliad Plant
Best Junior Handler – Pet Play Products offers \$25 gift certificate
Reserve Best Junior Handler - Pet Play Products offers \$15 gift certificate

OBEDIENCE

Qualifying score required for all prizes.

The Tony Bugarin Memorial Challenge Trophy is offered by the Los Encinos Kennel Club for High Combined Score in Open B and Utility. The trophy is a bronze sculpture by award-winning artist Chris Baldwin, for permanent possession to be won three times by the same owner, not necessarily with the same dog.

The Obedience Group of Los Encinos Kennel Club offers the ED SCHLESINGER MEMORIAL CHALLENGE TROPHY (Engraved SP 12" Revere Bowl on a Wooden Base) for permanent possession to be won three times by the same owner, not necessarily with the same dog.

Friday - Monday

Purina is pleased to be the official sponsor.



Friday Best in Show --Purina Pro Plan Shade Cloth offered by Purina
Reserve Best in Show - -Purina Pro Plan Exercise Pen Cover offered by Purina
Group First Winners --Purina Pro Plan Blanket offered by Purina
Group First Owner Handled --Purina Pro Plan Leash offered by Purina
Best in Show Owner Handled - -Purina Pro Plan Kibble Bag offered by Purina
Best Junior Handler, High in Trial - -Purina Pro Plan Grooming Towel offered by Purina

Saturday Best in Show - 3 large bags of any Purina Pro Plan dog food offered by Purina
Reserve Best in Show – 1 large bag of any Purina Pro Plan dog food offered by Purina
Group First Winners- -Purina Pro Plan Sports Bag offered by Purina Pro Plan
Group First Owner Handled - Purina Pro Plan Sports Bag offered by Purina Pro Plan
Best in Show Owner Handled - -Purina Pro Plan Kibble Bag offered by Purina
Best Junior Handler, High in Trial --Purina Pro Plan Cooler Bag offered by Purina

Sunday Best in Show - Purina Pro Plan Wagon offered by Purina
Reserve Best in Show - Purina Pro Plan Exercise Pen cover offered by Purina
Group First Winners - Purina Pro Plan Umbrella offered by Purina
Group First Owner Handled - -Purina Pro Plan Umbrella offered by Purina
Owner Handled Best in Show - -Purina Pro Plan Blanket offered by Purina
Best Junior Handler, High In Trial - -Purina Pro Plan Umbrella offered by Purina

Monday Best in Show - -Purina Pro Plan Tervis Bucket offered by Purina
Reserve Best in Show - Purina Pro Plan Dog Food Kibble Bag offered by Purina
Group First Winners - -Purina Pro Plan Blanket Bag offered by Purina
Group First Owner Handled - -Purina Pro Plan Dog Food Kibble Bag offered by Purina
Owner Handled Best in Show - -Purina Pro Plan Garment Bag offered by Purina
Best Junior Handler, High In Trial- -Purina Pro Plan Grooming Towel offered by Purina

First in 6-9- and 9-12-Month Puppy Class Winner Friday,
Winners Dog & Bitch Saturday,
Best of Breed Winner Sunday
-Product and/or gift valued at more than \$5.00

ALL AWARDS, IF NOT PRESENTED IN THE RING, MUST BE PICKED UP DURING THE EVENT AT THE PURINA BOOTH. PRESENTATION OF THE WINNING RIBBON IS REQUIRED. PURINA RESERVES THE RIGHT TO MAKE AWARD SUBSTITUTIONS OF EQUAL OR GREATER VALUE IF LISTED AWARD IS NOT AVAILABLE. **

COMBINED CLASSIFICATION

This classification applies to every show this weekend, unless otherwise noted within the specialty portion of the premium list.

Open Classes may be further divided.

REGULAR CLASSES

Puppy Dogs 6 mos. and under 9 mos.	Puppy Bitches 6 mos. and under 9 mos.
Puppy Dogs 9 mos. and under 12 mos.	Puppy Bitches 9 mos. and under 12 mos.
12 mos. and under 18 mos. Dogs	12 mos. and under 18 mos. Bitches
Novice Dogs	Novice Bitches
Amateur Owner Handled Dogs	Amateur Owner Handled Bitches
Bred by Exhibitor Dogs, Puppy	Bred by Exhibitor Bitches, Puppy
Bred by Exhibitor Dogs, Adult	Bred by Exhibitor Bitches, Adult
American Bred Dogs	American Bred Bitches
Open Dogs	Open Bitches
Winners Dog	Winners Bitch

NON-REGULAR CLASSES, INVOLVING SINGLE DOG ENTRIES

HUNTING RETRIEVER STARTED (divided by sex) is open to all dogs/bitches with a Working Certificate (WC), a Junior Hunter (JH) title, or a Junior Hunter Upland (JHU) title.

HUNTING RETRIEVER INTERMEDIATE (divided by sex) is open to all dogs/bitches with a Working Certificate Excellent (WCX), a Senior Hunter (JH) title, a Senior Hunter Upland (JHU) Title, or Derby Placements or Judges Award of Merits (JAM).

HUNTING RETRIEVER FINISHED (divided by sex) is open to all dogs/bitches with a Master Hunter (MH) title, a Master Hunter Upland (MHU) title, Qualifying and/or All Age Placements or Judges Award of Merits (JAM), a Field Champion (FC) title or Amateur Field Champion (AFC) title.

Veteran Dogs & Bitches - For dogs and bitches 7 years of age and older

Neutered Veteran Dogs & Spayed Veteran Bitches may be entered at Independent Specialty Shows and Concurrent Specialty Shows.

BEST OF BREED (VARIETY) COMPETITION

Best of Breed (Variety) Competition - "The following categories of dogs may be entered and shown in Best of Breed competition. Dogs that are Champions of Record. Dogs which according to their owner's records have completed the requirements for a championship but whose championships are unconfirmed. The entry and showing of dogs whose championships are unconfirmed is limited to a period of 90 days from the date of the show where a dog completed the requirements for a championship according to the owner's records. If, at the end of the 90-day period, the championship of a dog has not been confirmed by the American Kennel Club, no further entries of the dog for Best of Breed competition are to be made until its championship has been confirmed by the AKC."

NON-REGULAR CLASSES, INVOLVING MULTIPLE DOG ENTRIES

Stud Dog Class - For dogs that have sired two dogs or bitches entered in this show. The award will be based on the merits of the get. The owner of the stud dog need not be the owner of the get. As the judge's decision in this class will be based on the merits of more than one dog or bitch, no one of the dogs or bitches making up the entry judged first in the class, will be eligible to compete for Best of Breed by virtue of having won this class. The Stud Dog must appear in the ring with his get and be entered in the Stud Dog Class.

Brood Bitch Class - For bitches that have whelped two dogs or bitches entered in this show. The award will be based on the merits of the produce. The owner of the brood bitch need not be the owner of the produce. As the judge's decision in this class will be based on the merit of more than one dog or bitch, no one of the dogs or bitches making up the entry judged first in the class will be eligible to compete for Best of Breed by virtue of having won this class. The Brood Bitch must appear in the ring with her produce and be entered in the Brood Bitch Class.

JUNIOR SHOWMANSHIP CLASSIFICATION

Novice Junior	Novice Intermediate	Novice Senior
Open Junior	Open Intermediate	Open Senior
		Master

All-American / Mixed Breeds are allowed at these trials

Jump Order: High to Low for those classes with jumps in these trials

OBEDIENCE CLASSIFICATION

Beginner Novice A & B, Novice A & B, Open A & B, Utility A & B

RALLY

Rally Novice A	Rally Advanced A	Rally Excellent A
Rally Novice B	Rally Advanced B	Rally Excellent B
Rally Intermediate	Rally Master	Rally Choice

All Breed Judges Panel

Mrs. Catherine Bell 1158 Highgrove Garden Way, Knoxville, TN 37922
Mr. Michael Brantley* 4925 MacIntyre Ln, The Villages, FL 32163
Ms. Pamela Bruce Niagara Region CN 003520
Mrs. Debbie Campbell-Freeman 654 White Cap Dr, Ventura, CA 93003
Ms. Wendy Corr* 161 Pebble Ln, Alamo, CA 94507
Mrs. Edy Dykstra-Blum* 12177 SW 54th Ln Rd, Ocala, FL 34481
Ms. Edna Gonzalez Cisne 153, Lago de Guadalupe, Cuaititlan Izcalli, MEX 54760,
Mr. Duff M. Harris 16583 Yucca Circle, Fountain Valley, CA 92708
Miss Bonnie Lee 7809 Sand Harbor Court, Las Vegas, NV 89128
Mr. Michael Leonard 196 Kimmage Rd W., Dublin, Ireland 12,
Miss Sandra M. Lex* 70 Enfield Av, Toronto, Ontario M8W 1T9, CANADA
Mrs. Suzanne M. Mayborne 12900 Murphy Rd, Winnebago, IL 61088
Mrs. Janice L. McClary* P. O. Box 5013, Hacienda Heights, CA 91745
Mr. Juan Miranda Ciencias 25-402 Col Hipodromo, Condesa Delcuahtemoc,
Mex City, CP Mexico 06170
Mr. D. Scott Pfeil 27722 Brandenburg Rd, Ingleside, IL 60041
Mrs. Angela Pickett* 871 Russell Hill Rd NW, Sugar Valley, GA 30746
Ms. Vicki Seiler-Cushman 293 Cedar Trce, Xenia, OH 45385
Mrs. Kimberlie Steele-Lopez* 16540 Valle Vista Way, CA 92506
Mr. Daniel J. Smyth, Esq.* 42687 Capri Dr, Bermuda Dunes, CA 92203

*Judge was Provisional/Permit status for the assignment on the date the panel was approved by AKC.

FRIDAY

BEST in SHOW

Mr. Michael Leonard

SPORTING BREEDS

Mrs. Angela Pickett*

Barbets	Mrs. Pickett
Bracchi Italiani	Mrs. Pickett
Brittany's	Mrs. Pickett
Lagotto Romagnolo	Mrs. Pickett
Nederlandse Kooikerhondjes	Mrs. Pickett
Pointer	Mrs. Pickett
Pointers (German Shorthaired)	Mrs. Pickett
Pointers (German Wirehaired)	Mrs. Pickett
Retrievers (Chesapeake Bay)	Mrs. Pickett
Retrievers (Curly-Coated)	Mrs. Pickett
Retrievers (Flat-Coated)	Mrs. Pickett
Retrievers (Golden)	Mrs. Pickett
Retrievers (Labrador)	Mrs. Pickett
Open, Black; Chocolate; Yellow. Same division of classes in bitches.	
Retrievers (NS Duck Tolling)	Mrs. Pickett
Setters (English)	Mrs. Pickett*
Setters (Gordon)	Mrs. Pickett*
Setters (Irish)	Mrs. Pickett*
Setters (Irish, Red and White)	Mrs. Pickett*
Spaniels (American Water)	Mrs. Pickett*
Spaniels (Boykin)	Mrs. Pickett*
Spaniels (Clumber)	Mrs. Pickett*
Spaniels (Cocker) Black	Mrs. Pickett*
Spaniels (Cocker) Ascob	Mrs. Pickett*
Spaniels (Cocker) Parti Color	Mrs. Pickett*
Spaniels (English Cocker)	Mrs. Pickett*
Spaniels (English Springer)	Mrs. Pickett*
Spaniels (Field)	Mrs. Pickett*
Spaniels (Irish Water)	Mrs. Pickett*
Spaniels (Sussex)	Mrs. Pickett*
Spaniels (Welsh Springer)	Mrs. Pickett*
Spinoni Italiani	Mrs. Pickett
Vizslas	Mrs. Pickett
Weimaraners	Mrs. Pickett
Wirehaired Pointing Griffons	Mrs. Pickett
Wirehaired Vizslas	Mrs. Pickett

HOUND BREEDS

Mr. Daniel J. Smyth, Esq.

Afghan Hounds	Mr. Smyth, Esq.
American English Coonhounds	Mr. Smyth, Esq.
American Foxhounds	Mr. Smyth, Esq.
Azawakh	Mr. Smyth, Esq.
Basenjis	Mr. Smyth, Esq.
Basset Fauve de Bretagne	Mr. Smyth, Esq.
Basset Hounds	Mr. Smyth, Esq.
Beagles (Thirteen Inch)	Mrs. Bell
Beagles (Fifteen Inch)	Mrs. Bell
Black and Tan Coonhounds	Mr. Smyth, Esq.
Bloodhounds	Mr. Smyth, Esq.
Bluetick Coonhounds	Mr. Smyth, Esq.
Borzoi's	Mr. Smyth, Esq.
Cirnechi dell Etna	Mr. Smyth, Esq.
Dachshunds (Longhaired)	Mr. Smyth, Esq.
Open, Miniature 11 lbs. and under at 12 mos. of age and older; Any Eligible. Same division of classes in bitches.	
Dachshunds (Smooth)	Mr. Smyth, Esq.
Open, Miniature 11 lbs. and under at 12 mos. of age and older; Any Eligible. Same division of classes in bitches.	
Dachshunds (Wirehaired)	Mr. Smyth, Esq.
Open, Miniature 11 lbs. and under at 12 mos. of age and older; Any Eligible. Same division of classes in bitches.	
Foxhounds (English)	Mr. Smyth, Esq.
Grand Basset Griffon Vendeens	Mr. Smyth, Esq.
Greyhounds	Mr. Smyth, Esq.
Harriers	Mr. Smyth, Esq.
Ibizan Hounds	Mr. Smyth, Esq.
Irish Wolfhounds	Mr. Smyth, Esq.
Norwegian Elkhounds	Mr. Smyth, Esq.

Otterhounds	Mr. Smyth, Esq.
Petits Bassets Griffons Vendeens	Mr. Smyth, Esq.
Pharaoh Hounds	Mr. Smyth, Esq.
Plott Hounds	Mr. Smyth, Esq.
Portuguese Podengo Pequenos	Mr. Smyth, Esq.
Redbone Coonhound	Mr. Smyth, Esq.
Rhodesian Ridgebacks	Mr. Smyth, Esq.
Salukis	Mr. Smyth, Esq.
Scottish Deerhounds	Mr. Smyth, Esq.
Sloughi	Mr. Smyth, Esq.
Treeing Walker Coonhounds	Mr. Smyth, Esq.
Whippets	Mr. Smyth, Esq.

WORKING BREEDS

Mr. Juan Miranda

Akitas	Ms. Corr*
Alaskan Malamutes	Mr. Miranda
Anatolian Shepherds	Mr. Miranda
Bernese Mountain Dogs	Mr. Miranda
Black Russian Terriers	Mr. Miranda
Boerboel	Mrs. Bell
Boxers	Mr. Miranda
Open, Brindle; Fawn. Same division of classes in bitches.	
Bullmastiffs	Mrs. Bell
Open, Brindle; Any Other Allowed Color. Same division of classes in bitches.	
Cane Corso	Mrs. Bell
Chinook	Mr. Miranda
Danish-Swedish Farmdog	Ms. Corr*
Doberman Pinschers	Mrs. McClary
Open, Black; Any Other Allowed Color. Same division of classes in bitches.	
Dogos Argentino	Mr. Miranda
Dogue De Bordeaux	Mr. Miranda
German Pinschers	Mr. Miranda
Giant Schnauzers	Mr. Miranda
Great Danes	Mrs. McClary
Open, Black; Blue; Brindle; Fawn; Harlequin; Mantle; Merle. Same division of classes in bitches.	
Great Pyrenees	Mr. Miranda
Greater Swiss Mountain Dogs	Mr. Miranda
Komondorok	Mr. Miranda
Kuvaszok	Mr. Miranda
Leonberger	Mr. Miranda
Mastiffs	Mr. Miranda
Neapolitan Mastiffs	Mr. Miranda
Newfoundlands	Mr. Miranda
Portuguese Water Dogs	Mr. Miranda
Rottweilers	Mrs. McClary*
S T. Bernards	Mr. Miranda
Samoyeds	Mr. Miranda
Siberian Huskies	Ms. Corr
Standard Schnauzers	Mr. Miranda
Tibetan Mastiffs	Mr. Miranda

TERRIER BREEDS

Mr. Juan Miranda

Airedale Terriers	Mr. Miranda
American Hairless Terriers	Mr. Miranda
American Staffordshire Terriers	Mr. Miranda
Australian Terriers	Mr. Miranda
Bedlington Terriers	Mr. Miranda
Border Terriers	Mr. Miranda
Bull Terriers (Colored)	Mr. Miranda
Bull Terriers (White)	Mr. Miranda
Cairn Terriers	Mr. Miranda
Cesky Terriers	Mr. Miranda
Dandie Dinmont Terriers	Mr. Miranda
Fox Terriers (Smooth)	Mr. Miranda
Fox Terriers (Wire)	Mr. Miranda
Glen of Imaal Terriers	Mr. Miranda
Irish Terriers	Mr. Miranda
Kerry Blue Terriers	Mr. Miranda
Lakeland Terriers	Mr. Miranda
Manchester Terriers (Standard)	Mr. Miranda
Miniature Bull Terriers	Mr. Miranda
Miniature Schnauzers	Mr. Miranda
Norfolk Terriers	Mr. Miranda
Norwich Terriers	Mr. Miranda

FRIDAY

Parson Russell Terriers	Mr. Miranda
Rat Terriers	Mr. Miranda
Russell Terriers	Mr. Miranda
Scottish Terriers	Mr. Miranda
Sealyham Terriers	Mr. Miranda
Skye Terriers	Mr. Miranda
Soft Coated Wheaten Terriers	Mr. Miranda
Staffordshire Bull Terriers	Mr. Miranda
Teddy Roosevelt Terriers	Mr. Harris
Welsh Terriers	Mr. Miranda
West Highland White Terriers	Mr. Miranda

TOY BREEDS

Ms. Edna Gonzalez

Affenpinschers	Ms. Gonzalez
Biewer Terrier	Ms. Gonzalez
Brussels Griffons	Ms. Gonzalez
Cavalier King Charles Spaniels	Ms. Gonzalez
Open, Black & Tan; Blenheim; Ruby; Tri-Color. Same division of classes in bitches.	
Chihuahuas (Long Coat)	Ms. Gonzalez
Chihuahuas (Smooth Coat)	Ms. Gonzalez
Chinese Crested	Ms. Gonzalez
Open, Hairless; Powderpuff. Same division of classes in bitches.	
English Toy Spaniel (Blenheim & Prince Charles)	Ms. Gonzalez
English Toy Spaniel (King Charles & Ruby)	Ms. Gonzalez
Havanese	Ms. Gonzalez
Italian Greyhounds	Ms. Gonzalez
Japanese Chin	Ms. Gonzalez
Maltese	Ms. Gonzalez
Manchester Terriers (Toy)	Ms. Gonzalez
Miniature Pinschers	Ms. Gonzalez
Papillons	Mrs. McClary*
Pekingese	Mrs. McClary*
Pomeranian	Ms. Gonzalez
Open, Red, Orange, Cream and Sable; Black, Brown and Blue; Any Other Allowed Color. Same division of classes in bitches.	
Poodle (Toy)	Ms. Gonzalez
Pugs	Ms. Gonzalez
Open, Black; Fawn. Same division of classes in bitches.	
Russian Toy	Ms. Gonzalez
Russian Tsvetnaya Bolonka	Ms. Bruce
Shih Tzu	Ms. Gonzalez
Silky Terriers	Ms. Gonzalez
Toy Fox Terriers	Ms. Gonzalez
Yorkshire Terriers	Ms. Gonzalez

NON-SPORTING BREEDS

Mrs. Janice L. McClary

American Eskimos	Ms. Corr
Bichons Frises	Mrs. McClary
Boston Terriers	Mr. Leonard
Open, under 15 lbs.; 15 lbs and over Same division of classes in bitches.	
Bulldogs	Mr. Leonard
Chinese Shar-Pei	Ms. Corr
Chow Chows	Mr. Leonard
Open, Black; Red; Any Other Allowed Color. Same division of classes in bitches.	
Coton de Tulear	Ms. Corr*
Dalmatians	Mr. Leonard
Open, Black Spotted; Liver-Spotted. Same divi- sion of classes in bitches.	
Finnish Spitz	Ms. Corr
French Bulldogs	Mrs. McClary
Keeshonden	Ms. Corr
Lhasa Apsos	Ms. Corr*
Lowchen	Ms. Corr
Norwegian Lundehunds	Mrs. McClary
Poodles (Miniature)	Mrs. McClary
Poodles (Standard)	Mrs. McClary
Schipperkes	Ms. Corr*
Shiba-Inu	Ms. Corr
Tibetan Spaniels	Mrs. McClary
Tibetan Terriers	Ms. Corr*

Xoloitzcuintli

Ms. Corr*

HERDING BREEDS

Ms. Pamela Bruce

Australian Cattle Dogs	Ms. Bruce
Australian Shepherds	Mr. Leonard
Open, Black; Blue Merle; Red Merle; Red. Same division of classes in bitches.	
Bearded Collies	Ms. Bruce
Beauceron	Mr. Leonard
Belgian Laekenois	Ms. Bruce
Belgian Malinois	Ms. Bruce
Belgian Sheepdogs	Ms. Bruce
Belgian Tervuren	Ms. Bruce
Bergamasco Sheepdogs	Ms. Bruce
Berger Picard	Ms. Bruce
Border Collies	Mr. Leonard
Bouvier Des Flandres	Ms. Bruce
Briards	Ms. Bruce
Canaan Dog	Ms. Bruce
Cardigan Welsh Corgis	Ms. Bruce
Collies (Rough)	Ms. Bruce
Open, Blue; Sable & White; TriColor; White Same division of classes in bitches.	
Collies (Smooth)	Ms. Bruce
Entlebucher Mountain Dogs	Ms. Bruce
Finnish Lapphund	Ms. Bruce
German Shepherd Dogs	Ms. Bruce
Icelandic Sheepdogs	Ms. Bruce
Lancashire Heelers	Ms. Bruce
Miniature American Shepherd	Ms. Bruce
Open, Black; Blue Merle; Red Merle; Red. Same division of classes in bitches.	
Mudi	Ms. Bruce
Norwegian Buhunds	Ms. Bruce
Old English Sheepdogs	Ms. Bruce
Pembroke Welsh Corgis	Ms. Bruce
Polish Lowland Sheepdogs	Ms. Bruce
Pulik	Ms. Bruce
Pumik	Ms. Bruce
Pyrenean Shepherds	Ms. Bruce
Shetland Sheepdogs	Ms. Bruce
Open, Sable and White; Any Other Allowed Color. Same division of classes in bitches.	
Spanish Water Dog	Ms. Bruce
Swedish Vallhunds	Ms. Bruce

MISCELLANEOUS CLASS

Mr. Michael Leonard

There will be a puppy, bred by and open class for dogs and bitches in each breed: Alaskan Klee Kai, Bolognese, Czechoslovakian Viciak, Dutch Shepherd, German Spitz, Japan Akitainu, Kai Ken, Norrbottenspets, Peruvian Inca Orchid, Portuguese Podengo, Pyrenean Mastiff, Small Munsterlander, Yakutian Laika.

JUNIOR SHOWMANSHIP COMPETITION

Ms. Wendy Corr

OBEDIENCE

Beginner Novice A	Miss Lee
Beginner Novice B	Miss Lee
Novice Class A	Miss Lee
Novice Class B	Miss Lee
Open Class A	Miss Lee
Open Class B	Miss Lee
Utility Class A	Miss Lee
Utility Class B	Miss Lee
Rally Novice A	Mrs. Mayborne
Rally Novice B	Mrs. Mayborne
Rally Intermediate	Mrs. Mayborne
Rally Advanced A	Mrs. Mayborne
Rally Advanced B	Mrs. Mayborne
Rally Excellent A	Mrs. Mayborne
Rally Excellent B	Mrs. Mayborne
Rally Master	Mrs. Mayborne
Rally Choice	Mrs. Mayborne

SATURDAY

BEST in SHOW

Mrs. Janice L. McClary

SPORTING BREEDS

Ms. Edna Gonzalez

Barbets	Mr. Smyth, Esq.
Bracchi Italiani	Mr. Smyth, Esq.
Brittany's	Mr. Smyth, Esq.
Lagotto Romagnolo	Mr. Smyth, Esq.
Nederlandse Kooikerhondjes	Mr. Smyth, Esq.
Pointer	Mr. Smyth, Esq.*
Pointers (German Shorthaired)	Mr. Smyth, Esq.
Pointers (German Wirehaired)	Mr. Smyth, Esq.
Retrievers (Chesapeake Bay)	Ms. Gonzalez
Retrievers (Curly-Coated)	Mr. Smyth, Esq.
Retrievers (Flat-Coated)	Ms. Gonzalez
Retrievers (Golden)	Mr. Smyth, Esq.
Retrievers (Labrador)	Mr. Smyth, Esq.
Open, Black; Chocolate; Yellow. Same division of classes in bitches.	
Retrievers (NS Duck Tolling)	Mr. Smyth, Esq.*
Setters (English)	Ms. Gonzalez
Setters (Gordon)	Mr. Smyth, Esq.*
Setters (Irish)	Mr. Smyth, Esq.
Setters (Irish, Red and White)	Mr. Smyth, Esq.
Spaniels (American Water)	Ms. Gonzalez
Spaniels (Boykin)	Ms. Gonzalez
Spaniels (Clumber)	Ms. Gonzalez
Spaniels (Cocker) Black	Mr. Smyth, Esq.
Spaniels (Cocker) Ascob	Mr. Smyth, Esq.
Spaniels (Cocker) Parti Color	Mr. Smyth, Esq.
Spaniels (English Cocker)	Ms. Gonzalez
Spaniels (English Springer)	Mr. Smyth, Esq.
Spaniels (Field)	Mr. Smyth, Esq.
Spaniels (Irish Water)	Ms. Gonzalez
Spaniels (Sussex)	Mr. Smyth, Esq.*
Spaniels (Welsh Springer)	Mr. Smyth, Esq.
Spinoni Italiani	Mr. Smyth, Esq.
Vizslas	Mr. Smyth, Esq.
Weimaraners	Mr. Smyth, Esq.
Wirehaired Pointing Griffons	Mr. Smyth, Esq.
Wirehaired Vizslas	Ms. Gonzalez

HOUD BREEDS

Ms. Pamela Bruce

Afghan Hounds	Ms. Bruce
American English Coonhounds	Ms. Bruce
American Foxhounds	Ms. Bruce
Azawakh	Ms. Bruce
Basenjis	Ms. Bruce
Basset Fauve de Bretagne	Ms. Bruce
Basset Hounds	Ms. Bruce
Beagles (Thirteen Inch)	Ms. Gonzalez
Beagles (Fifteen Inch)	Ms. Gonzalez
Black and Tan Coonhounds	Ms. Bruce
Bloodhounds	Ms. Bruce
Bluetick Coonhounds	Ms. Bruce
Borzoi's	Ms. Bruce
Cirnechi dell Etna	Ms. Bruce
Dachshunds (Longhaired)	Ms. Gonzalez
Open, Miniature 11 lbs. and under at 12 mos. of age and older; Any Eligible. Same division of classes in bitches.	
Dachshunds (Smooth)	Ms. Gonzalez
Open, Miniature 11 lbs. and under at 12 mos. of age and older; Any Eligible. Same division of classes in bitches.	
Dachshunds (Wirehaired)	Ms. Gonzalez
Open, Miniature 11 lbs. and under at 12 mos. of age and older; Any Eligible. Same division of classes in bitches.	
Foxhounds (English)	Ms. Bruce
Grand Basset Griffon Vendeens	Ms. Bruce
Greyhounds	Ms. Bruce
Harriers	Ms. Bruce
Ibizan Hounds	Ms. Gonzalez
Irish Wolfhounds	Ms. Bruce
Norwegian Elkhounds	Ms. Bruce

Otterhounds	Ms. Bruce
Petits Bassets Griffons Vendeens	Ms. Bruce
Pharaoh Hounds	Ms. Bruce
Plott Hounds	Ms. Bruce
Portuguese Podengo Pequenos	Ms. Bruce
Redbone Coonhound	Ms. Bruce
Rhodesian Ridgebacks	Ms. Bruce
Salukis	Ms. Bruce
Scottish Deerhounds	Ms. Bruce
Sloughi	Ms. Bruce
Treeing Walker Coonhounds	Ms. Bruce
Whippets	Ms. Bruce

WORKING BREEDS

Mr. Michael Leonard

Akitas	Mr. Leonard
Alaskan Malamutes	Mr. Leonard
Anatolian Shepherds	Mr. Leonard
Bernese Mountain Dogs	Mr. Leonard
Black Russian Terriers	Mr. Leonard
Boerboel	Mr. Miranda
Boxers	Mr. Leonard
Open, Brindle; Fawn. Same division of classes in bitches.	
Bullmastiffs	Mr. Miranda
Open, Brindle; Any Other Allowed Color. Same division of classes in bitches.	
Cane Corso	Mr. Leonard
Chinook	Ms. Gonzalez
Danish-Swedish Farmdog	Ms. Gonzalez
Doberman Pinschers	Mr. Leonard
Open, Black; Any Other Allowed Color. Same division of classes in bitches.	
Dogos Argentino	Mr. Leonard
Dogue De Bordeaux	Mr. Leonard
German Pinschers	Mr. Leonard
Giant Schnauzers	Mr. Leonard
Great Danes	Mr. Leonard
Open, Black; Blue; Brindle; Fawn; Harlequin; Mantle; Merle. Same division of classes in bitches.	
Great Pyrenees	Mr. Leonard
Greater Swiss Mountain Dogs	Mr. Leonard
Komondorok	Mr. Leonard
Kuvaszok	Mr. Leonard
Leonberger	Mr. Leonard
Mastiffs	Mr. Leonard
Neapolitan Mastiffs	Mr. Leonard
Newfoundlands	Mr. Leonard
Portuguese Water Dogs	Mr. Leonard
Rottweilers	Mr. Leonard
S T. Bernards	Mr. Leonard
Samoyeds	Mr. Leonard
Siberian Huskies	Mr. Leonard
Standard Schnauzers	Mr. Leonard
Tibetan Mastiffs	Mr. Leonard

TERRIER BREEDS

Miss Sandra M. Lex*

Airedale Terriers	Miss Lex
American Hairless Terriers	Miss Lex*
American Staffordshire Terriers	Miss Lex*
Australian Terriers	Miss Lex*
Bedlington Terriers	Miss Lex*
Border Terriers	Miss Lex
Bull Terriers (Colored)	Miss Lex*
Bull Terriers (White)	Miss Lex*
Cairn Terriers	Miss Lex
Cesky Terriers	Miss Lex*
Dandie Dinmont Terriers	Miss Lex*
Fox Terriers (Smooth)	Miss Lex
Fox Terriers (Wire)	Miss Lex
Glen of Imaal Terriers	Miss Lex
Irish Terriers	Miss Lex*
Kerry Blue Terriers	Miss Lex
Lakeland Terriers	Miss Lex
Manchester Terriers (Standard)	Miss Lex
Miniature Bull Terriers	Miss Lex*
Miniature Schnauzers	Miss Lex*
Norfolk Terriers	Miss Lex*
Norwich Terriers	Miss Lex

SATURDAY

Parson Russell Terriers	Miss Lex*
Rat Terriers	Miss Lex*
Russell Terriers	Miss Lex*
Scottish Terriers	Miss Lex
Sealyham Terriers	Miss Lex*
Skye Terriers	Miss Lex*
Soft Coated Wheaten Terriers	Miss Lex
Staffordshire Bull Terriers	Miss Lex*
Teddy Roosevelt Terriers	Miss Lex*
Welsh Terriers	Miss Lex
West Highland White Terriers	Miss Lex

TOY BREEDS

Mr. Juan Miranda

Affenpinschers	Mr. Miranda
Biewer Terrier	Ms. Bruce
Brussels Griffons	Mr. Miranda
Cavalier King Charles Spaniels	Mr. Miranda
Open, Black & Tan; Blenheim; Ruby; Tri-Color. Same division of classes in bitches.	
Chihuahuas (Long Coat)	Mr. Miranda
Chihuahuas (Smooth Coat)	Mr. Miranda
Chinese Crested	Mr. Miranda
Open, Hairless; Powderpuff. Same division of classes in bitches.	
English Toy Spaniel (Blenheim & Prince Charles)	Mr. Miranda
English Toy Spaniel (King Charles & Ruby)	Mr. Miranda
Havanese	Mr. Miranda
Italian Greyhounds	Mr. Miranda
Japanese Chin	Mr. Miranda
Maltese	Mr. Miranda
Manchester Terriers (Toy)	Mr. Miranda
Miniature Pinschers	Mr. Miranda
Papillons	Mr. Miranda
Pekingese	Mr. Miranda
Pomeranian	Mr. Miranda
Open, Red, Orange, Cream and Sable; Black, Brown and Blue; Any Other Allowed Color. Same division of classes in bitches.	
Poodle (Toy)	Mr. Miranda
Pugs	Mr. Miranda
Open, Black; Fawn. Same division of classes in bitches.	
Russian Toy	Mr. Miranda
Russian Tsvetnaya Bolonka	Mr. Smyth, Esq.
Shih Tzu	Mr. Miranda
Silky Terriers	Mr. Miranda
Toy Fox Terriers	Mr. Miranda
Yorkshire Terriers	Mr. Miranda

NON-SPORTING BREEDS

Mrs. Angela Pickett

American Eskimos	Mrs. Pickett
Bichons Frises	Mrs. Pickett
Boston Terriers	Mrs. Pickett
Open, under 15 lbs.; 15 lbs and over Same division of classes in bitches.	
Bulldogs	Mrs. Pickett
Chinese Shar-Pei	Mrs. Pickett
Chow Chows	Mr. Brantley*
Open, Black; Red; Any Other Allowed Color. Same division of classes in bitches.	
Coton de Tulear	Mrs. Pickett
Dalmatians	Mrs. Pickett
Open, Black Spotted; Liver-Spotted. Same divi- sion of classes in bitches.	
Finnish Spitz	Mrs. Pickett
French Bulldogs	Mrs. Pickett
Keeshonden	Mrs. Pickett
Lhasa Apsos	Mrs. Pickett
Lowchen	Mrs. Pickett
Norwegian Lundehunds	Mrs. Pickett
Poodles (Miniature)	Mr. Miranda
Poodles (Standard)	Mr. Miranda
Schipperkes	Mrs. Pickett
Shiba-Inu	Mrs. Pickett
Tibetan Spaniels	Mrs. Pickett
Tibetan Terriers	Mrs. Pickett

Xoloitzcuintli..... Mrs. Pickett

HERDING BREEDS

Ms. Vicki Seiler-Cushman

Australian Cattle Dogs	Ms. Seiler-Cushman
Australian Shepherds	Ms. Seiler-Cushman
Open, Black; Blue Merle; Red Merle; Red. Same division of classes in bitches.	
Bearded Collies	Ms. Seiler-Cushman
Beauceron	Ms. Seiler-Cushman
Belgian Laekenois	Ms. Seiler-Cushman
Belgian Malinois	Ms. Seiler-Cushman
Belgian Sheepdogs	Ms. Seiler-Cushman
Belgian Tervuren	Ms. Seiler-Cushman
Bergamasco Sheepdogs	Ms. Seiler-Cushman
Berger Picard	Ms. Seiler-Cushman
Border Collies	Ms. Seiler-Cushman
Bouvier Des Flandres	Ms. Gonzalez
Briards	Ms. Seiler-Cushman
Canaan Dog	Ms. Seiler-Cushman
Cardigan Welsh Corgis	Ms. Seiler-Cushman
Collies (Rough)	Ms. Gonzalez
Open, Blue; Sable & White; TriColor; White Same division of classes in bitches.	
Collies (Smooth)	Ms. Gonzalez
Entlebucher Mountain Dogs	Ms. Seiler-Cushman
Finnish Lapphund	Ms. Seiler-Cushman
German Shepherd Dogs	Ms. Seiler-Cushman
Icelandic Sheepdogs	Ms. Seiler-Cushman
Lancashire Heelers	Ms. Seiler-Cushman
Miniature American Shepherd	Ms. Seiler-Cushman
Open, Black; Blue Merle; Red Merle; Red. Same division of classes in bitches.	
Mudi	Ms. Seiler-Cushman
Norwegian Buhunds	Ms. Seiler-Cushman
Old English Sheepdogs	Ms. Seiler-Cushman
Pembroke Welsh Corgis	Ms. Seiler-Cushman
Polish Lowland Sheepdogs	Ms. Seiler-Cushman
Pulik	Ms. Seiler-Cushman
Pumik	Ms. Seiler-Cushman
Pyrenean Shepherds	Ms. Seiler-Cushman
Shetland Sheepdogs	Ms. Seiler-Cushman
Open, Sable and White; Any Other Allowed Color. Same division of classes in bitches.	
Spanish Water Dog	Ms. Seiler-Cushman
Swedish Vallhunds	Ms. Seiler-Cushman

MISCELLANEOUS CLASS

Mrs. Janice L. McClary

There will be a puppy, bred by and open class for dogs and bitches in each breed: Alaskan Klee Kai, Bolognese, Czechoslovakian Viciak, Dutch Shepherd, German Spitz, Japan Akitainu, Kai Ken, Norrbottenspets, Peruvian Inca Orchid, Portuguese Podengo, Pyrenean Mastiff, Small Munsterlander, Yakutian Laika.

JUNIOR SHOWMANSHIP COMPETITION

Mrs. Janice L. McClary

OBEDIENCE

Beginner Novice A	Miss Lee
Beginner Novice B	Miss Lee
Novice Class A	Miss Lee
Novice Class B	Miss Lee
Open Class A	Miss Lee
Open Class B	Miss Lee
Utility Class A	Miss Lee
Utility Class B	Miss Lee
Rally Novice A	Mrs. Mayborne
Rally Novice B	Mrs. Mayborne
Rally Intermediate	Mrs. Mayborne
Rally Advanced A	Mrs. Mayborne
Rally Advanced B	Mrs. Mayborne
Rally Excellent A	Mrs. Mayborne
Rally Excellent B	Mrs. Mayborne
Rally Master	Mrs. Mayborne
Rally Choice	Mrs. Mayborne

SUNDAY

BEST in SHOW

Ms. Vicki Seiler-Cushman

SPORTING BREEDS

Miss Sandra M. Lex

Barbets	Miss Lex
Bracchi Italiani	Miss Lex
Brittany's	Miss Lex
Lagotto Romagnolo	Miss Lex
Nederlandse Kooikerhondjes	Miss Lex
Pointer	Miss Lex
Pointers (German Shorthaired)	Miss Lex
Pointers (German Wirehaired)	Miss Lex
Retrievers (Chesapeake Bay)	Miss Lex
Retrievers (Curly-Coated)	Miss Lex
Retrievers (Flat-Coated)	Miss Lex
Retrievers (Golden)	Miss Lex
Retrievers (Labrador)	Miss Lex
Open, Black; Chocolate; Yellow. Same division of classes in bitches.	
Retrievers (NS Duck Tolling)	Miss Lex
Setters (English)	Miss Lex
Setters (Gordon)	Miss Lex
Setters (Irish)	Miss Lex
Setters (Irish, Red and White)	Miss Lex
Spaniels (American Water)	Miss Lex
Spaniels (Boykin)	Miss Lex
Spaniels (Clumber)	Miss Lex
Spaniels (Cocker) Black	Miss Lex
Spaniels (Cocker) Ascob	Miss Lex
Spaniels (Cocker) Parti Color	Miss Lex
Spaniels (English Cocker)	Miss Lex
Spaniels (English Springer)	Miss Lex
Spaniels (Field)	Miss Lex
Spaniels (Irish Water)	Miss Lex
Spaniels (Sussex)	Miss Lex
Spaniels (Welsh Springer)	Miss Lex
Spinoni Italiani	Miss Lex
Vizslas	Miss Lex
Weimaraners	Miss Lex
Wirehaired Pointing Griffons	Miss Lex
Wirehaired Vizslas	Miss Lex

HOUND BREEDS

Mrs. Catherine Bell

Afghan Hounds	Mrs. Pickett
American English Coonhounds	Mrs. Bell
American Foxhounds	Mrs. Bell
Azawakh	Mrs. Bell
Basenjis	Mrs. Bell
Basset Fauve de Bretagne	Mrs. Bell
Basset Hounds	Mrs. Pickett
Beagles (Thirteen Inch)	Mrs. Pickett
Beagles (Fifteen Inch)	Mrs. Pickett
Black and Tan Coonhounds	Mrs. Bell
Bloodhounds	Mrs. Bell
Bluetick Coonhounds	Mrs. Bell
Borzoi's	Mrs. Bell
Cirnechi dell Etna	Mrs. Bell
Dachshunds (Longhaired)	Mrs. Bell
Open, Miniature 11 lbs. and under at 12 mos. of age and older; Any Eligible. Same division of classes in bitches.	
Dachshunds (Smooth)	Mrs. Bell
Open, Miniature 11 lbs. and under at 12 mos. of age and older; Any Eligible. Same division of classes in bitches.	
Dachshunds (Wirehaired)	Mrs. Bell
Open, Miniature 11 lbs. and under at 12 mos. of age and older; Any Eligible. Same division of classes in bitches.	
Foxhounds (English)	Mrs. Bell
Grand Basset Griffon Vendeens	Mrs. Bell
Greyhounds	Mrs. Bell
Harriers	Mrs. Bell
Ibizan Hounds	Mr. Miranda
Irish Wolfhounds	Mrs. Bell
Norwegian Elkhounds	Mrs. Bell

Otterhounds	Mrs. Bell
Petits Bassets Griffons Vendeens	Mrs. Bell
Pharaoh Hounds	Mrs. Bell
Plott Hounds	Mrs. Bell
Portuguese Podengo Pequenos	Mrs. Bell
Redbone Coonhound	Mrs. Bell
Rhodesian Ridgebacks	Mrs. Pickett
Salukis	Mrs. Bell
Scottish Deerhounds	Mrs. Bell
Sloughi	Mrs. Bell
Treeing Walker Coonhounds	Mrs. Bell
Whippets	Mrs. Pickett

WORKING BREEDS

Ms. Pamela Bruce

Akitas	Ms. Bruce
Alaskan Malamutes	Ms. Bruce
Anatolian Shepherds	Ms. Bruce
Bernese Mountain Dogs	Ms. Bruce
Black Russian Terriers	Ms. Bruce
Boerboel	Ms. Bruce
Boxers	Ms. Bruce
Open, Brindle; Fawn. Same division of classes in bitches.	
Bullmastiffs	Ms. Bruce
Open, Brindle; Any Other Allowed Color. Same division of classes in bitches.	
Cane Corso	Ms. Bruce
Chinook	Ms. Bruce
Danish-Swedish Farmdog	Mrs. Bell
Doberman Pinschers	Ms. Bruce
Open, Black; Any Other Allowed Color. Same division of classes in bitches.	
Dogos Argentino	Ms. Bruce
Dogue De Bordeaux	Ms. Bruce
German Pinschers	Ms. Bruce
Giant Schnauzers	Ms. Bruce
Great Danes	Ms. Bruce
Open, Black; Blue; Brindle; Fawn; Harlequin; Mantle; Merle. Same division of classes in bitches.	
Great Pyrenees	Ms. Bruce
Greater Swiss Mountain Dogs	Ms. Bruce
Komondorok	Ms. Bruce
Kuvaszok	Ms. Bruce
Leonberger	Ms. Bruce
Mastiffs	Ms. Bruce
Neapolitan Mastiffs	Ms. Bruce
Newfoundlands	Ms. Bruce
Portuguese Water Dogs	Ms. Bruce
Rottweilers	Ms. Bruce
S T. Bernards	Ms. Bruce
Samoyeds	Ms. Bruce
Siberian Huskies	Ms. Bruce
Standard Schnauzers	Ms. Bruce
Tibetan Mastiffs	Ms. Bruce

TERRIER BREEDS

Ms. Edna Gonzalez

Airedale Terriers	Ms. Gonzalez
American Hairless Terriers	Ms. Gonzalez
American Staffordshire Terriers	Ms. Gonzalez
Australian Terriers	Ms. Gonzalez
Bedlington Terriers	Ms. Gonzalez
Border Terriers	Ms. Gonzalez
Bull Terriers (Colored)	Ms. Gonzalez
Bull Terriers (White)	Ms. Gonzalez
Cairn Terriers	Ms. Gonzalez
Cesky Terriers	Ms. Gonzalez
Dandie Dinmont Terriers	Ms. Gonzalez
Fox Terriers (Smooth)	Ms. Gonzalez
Fox Terriers (Wire)	Ms. Gonzalez
Glen of Imaal Terriers	Ms. Gonzalez
Irish Terriers	Ms. Gonzalez
Kerry Blue Terriers	Ms. Gonzalez
Lakeland Terriers	Ms. Gonzalez
Manchester Terriers (Standard)	Ms. Gonzalez
Miniature Bull Terriers	Ms. Gonzalez
Miniature Schnauzers	Ms. Gonzalez
Norfolk Terriers	Ms. Gonzalez
Norwich Terriers	Ms. Gonzalez

SUNDAY

Parson Russell Terriers	Ms. Gonzalez
Rat Terriers	Ms. Gonzalez
Russell Terriers	Ms. Gonzalez
Scottish Terriers	Ms. Gonzalez
Sealyham Terriers	Ms. Gonzalez
Skye Terriers	Ms. Gonzalez
Soft Coated Wheaten Terriers	Ms. Gonzalez
Staffordshire Bull Terriers	Ms. Gonzalez
Teddy Roosevelt Terriers	Ms. Gonzalez
Welsh Terriers	Ms. Gonzalez
West Highland White Terriers	Ms. Gonzalez

TOY BREEDS

Mr. Michael Leonard

Affenpinschers	Mr. Leonard
Biewer Terrier	Miss Lex
Brussels Griffons	Mr. Leonard
Cavalier King Charles Sp.	Ms. Seiler-Cushman
Open, Black & Tan; Blenheim; Ruby; Tri-Color.	Same division of classes in bitches.
Chihuahuas (Long Coat)	Mr. Leonard
Chihuahuas (Smooth Coat)	Mr. Leonard
Chinese Crested	Mr. Leonard
Open, Hairless; Powderpuff. Same division of	classes in bitches.
English Toy Spaniel	
(Blenheim & Prince Charles)	Mr. Leonard
English Toy Spaniel	
(King Charles & Ruby)	Mr. Leonard
Havanese	Mr. Leonard
Italian Greyhounds	Mr. Leonard
Japanese Chin	Mr. Leonard
Maltese	Mr. Leonard
Manchester Terriers (Toy)	Mr. Leonard
Miniature Pinschers	Mr. Leonard
Papillons	Mr. Leonard
Pekingese	Mr. Leonard
Pomeranian	Mr. Leonard
Open, Red, Orange, Cream and Sable; Black,	Brown and Blue; Any Other Allowed Color.
Same division of classes in bitches.	
Poodle (Toy)	Mr. Leonard
Pugs	Mr. Leonard
Open, Black; Fawn. Same division of classes in	bitches.
Russian Toy	Miss Lex
Russian Tsvetnaya Bolonka	Miss Lex
Shih Tzu	Mr. Leonard
Silky Terriers	Mr. Leonard
Toy Fox Terriers	Mr. Leonard
Yorkshire Terriers	Mr. Leonard

NON-SPORTING BREEDS

Mrs. Edy Dykstra-Blum

American Eskimos	Mrs. Dykstra-Blum
Bichons Frises	Mrs. Dykstra-Blum
Boston Terriers	Mrs. Dykstra-Blum
Open, under 15 lbs.; 15 lbs and over	Same
division of classes in bitches.	
Bulldogs	Mrs. Dykstra-Blum
Chinese Shar-Pei	Mrs. Dykstra-Blum
Chow Chows	Mrs. Dykstra-Blum
Open, Black; Red; Any Other Allowed Color.	Same
division of classes in bitches.	
Coton de Tulear	Mrs. Dykstra-Blum
Dalmatians	Mrs. Dykstra-Blum
Open, Black Spotted; Liver-Spotted. Same	divi-
son of classes in bitches.	
Finnish Spitz	Mrs. Dykstra-Blum
French Bulldogs	Mrs. Dykstra-Blum
Keeshonden	Mrs. Dykstra-Blum
Lhasa Apsos	Mrs. Dykstra-Blum
Lowchen	Mrs. Dykstra-Blum
Norwegian Lundehunds	Mrs. Dykstra-Blum
Poodles (Miniature)	Mrs. Dykstra-Blum
Poodles (Standard)	Mrs. Dykstra-Blum
Schipperkes	Mrs. Dykstra-Blum
Shiba-Inu	Mrs. Dykstra-Blum
Tibetan Spaniels	Mrs. Dykstra-Blum
Tibetan Terriers	Mrs. Dykstra-Blum

Xoloitzcuintli

Mrs. Dykstra-Blum

HERDING BREEDS

Mr. Juan Miranda

Australian Cattle Dogs	Mr. Miranda
Australian Shepherds	Mr. Miranda
Open, Black; Blue Merle; Red Merle; Red.	Same
division of classes in bitches.	
Bearded Collies	Mr. Miranda
Beauceron	Mr. Miranda
Belgian Laekenois	Mr. Miranda
Belgian Malinois	Mr. Miranda
Belgian Sheepdogs	Mr. Miranda
Belgian Tervuren	Mr. Miranda
Bergamasco Sheepdogs	Mr. Miranda
Berger Picard	Mr. Miranda
Border Collies	Mr. Miranda
Bouvier Des Flandres	Ms. Seiler-Cushman
Briards	Mr. Miranda
Canaan Dog	Mr. Miranda
Cardigan Welsh Corgis	Mr. Miranda
Collies (Rough)	Ms. Seiler-Cushman
Open, Blue; Sable & White; TriColor; White	Same
division of classes in bitches.	
Collies (Smooth)	Ms. Seiler-Cushman
Entlebucher Mountain Dogs	Mr. Miranda
Finnish Lapphund	Mr. Miranda
German Shepherd Dogs	Mr. Miranda
Icelandic Sheepdogs	Mr. Miranda
Lancashire Heelers	Mr. Miranda
Miniature American Shepherd	Mr. Miranda
Open, Black; Blue Merle; Red Merle; Red.	Same
division of classes in bitches.	
Mudi	Mr. Miranda
Norwegian Buhunds	Mr. Miranda
Old English Sheepdogs	Mr. Miranda
Pembroke Welsh Corgis	Mr. Miranda
Polish Lowland Sheepdogs	Mr. Miranda
Pulik	Mr. Miranda
Pumik	Mr. Miranda
Pyrenean Shepherds	Mr. Miranda
Shetland Sheepdogs	Mr. Miranda
Open, Sable and White; Any Other Allowed	Color. Same
division of classes in bitches.	
Spanish Water Dog	Mr. Miranda
Swedish Vallhunds	Mr. Miranda

MISCELLANEOUS CLASS

Ms. Vicki Seiler-Cushman

There will be a puppy, bred by and open class for dogs and bitches in each breed: Alaskan Klee Kai, Bolognese, Czechoslovakian Viciak, Dutch Shepherd, German Spitz, Japan Akitainu, Kai Ken, Norrbottenspets, Peruvian Inca Orchid, Portuguese Podengo, Pyrenean Mastiff, Small Munsterlander, Yakutian Laika.

JUNIOR SHOWMANSHIP COMPETITION

Mrs. Angela Pickett

OBEDIENCE

Beginner Novice A	Mrs. Mayborne
Beginner Novice B	Mrs. Mayborne
Novice Class A	Mrs. Mayborne
Novice Class B	Mrs. Mayborne
Open Class A	Mrs. Mayborne
Open Class B	Mrs. Mayborne
Utility Class A	Mrs. Mayborne
Utility Class B	Mrs. Mayborne
Rally Novice A	Miss Lee
Rally Novice B	Miss Lee
Rally Intermediate	Miss Lee
Rally Advanced A	Miss Lee
Rally Advanced B	Miss Lee
Rally Excellent A	Miss Lee
Rally Excellent B	Miss Lee
Rally Master	Miss Lee
Rally Choice	Miss Lee

MONDAY

BEST in SHOW

Mrs. Edy Dykstra-Blum

SPORTING BREEDS

Mr. Michael Leonard

Barbets	Ms. Gonzalez
Bracchi Italiani	Ms. Gonzalez
Brittany's	Ms. Gonzalez
Lagotto Romagnolo	Ms. Gonzalez
Nederlandse Kooikerhondjes	Ms. Gonzalez
Pointer	Ms. Gonzalez
Pointers (German Shorthaired)	Ms. Gonzalez
Pointers (German Wirehaired)	Ms. Gonzalez
Retrievers (Chesapeake Bay)	Mr. Leonard
Retrievers (Curly-Coated)	Ms. Gonzalez
Retrievers (Flat-Coated)	Mr. Leonard
Retrievers (Golden)	Mrs. McClary*
Retrievers (Labrador)	Ms. Gonzalez
Open, Black; Chocolate; Yellow. Same division of classes in bitches.	
Retrievers (NS Duck Tolling)	Ms. Gonzalez
Setters (English)	Mr. Leonard
Setters (Gordon)	Ms. Gonzalez
Setters (Irish)	Ms. Gonzalez
Setters (Irish, Red and White)	Ms. Gonzalez
Spaniels (American Water)	Mr. Leonard
Spaniels (Boykin)	Mrs. Campbell-Freeman
Spaniels (Clumber)	Mr. Leonard
Spaniels (Cocker) Black	Ms. Gonzalez
Spaniels (Cocker) Ascob	Ms. Gonzalez
Spaniels (Cocker) Parti Color	Ms. Gonzalez
Spaniels (English Cocker)	Mr. Leonard
Spaniels (English Springer)	Ms. Gonzalez
Spaniels (Field)	Ms. Gonzalez
Spaniels (Irish Water)	Mr. Leonard
Spaniels (Sussex)	Ms. Gonzalez
Spaniels (Welsh Springer)	Ms. Gonzalez
Spinoni Italiani	Ms. Gonzalez
Vizslas	Ms. Gonzalez
Weimaraners	Ms. Gonzalez
Wirehaired Pointing Griffons	Ms. Gonzalez
Wirehaired Vizslas	Mr. Leonard

HOUND BREEDS

Mr. D. Scott Pfeil

Afghan Hounds	Mr. Pfeil
American English Coonhounds	Mr. Pfeil
American Foxhounds	Mr. Pfeil
Azawakh	Mr. Pfeil
Basenjis	Mr. Pfeil
Basset Fauve de Bretagne	Mrs. Pickett
Basset Hounds	Mr. Pfeil
Beagles (Thirteen Inch)	Mr. Pfeil
Beagles (Fifteen Inch)	Mr. Pfeil
Black and Tan Coonhounds	Mr. Pfeil
Bloodhounds	Mr. Pfeil
Bluetick Coonhounds	Mr. Pfeil
Borzoi's	Mr. Pfeil
Cirnechi dell Etna	Mr. Pfeil
Dachshunds (Longhaired)	Mr. Pfeil
Open, Miniature 11 lbs. and under at 12 mos. of age and older; Any Eligible. Same division of classes in bitches.	
Dachshunds (Smooth)	Mr. Pfeil
Open, Miniature 11 lbs. and under at 12 mos. of age and older; Any Eligible. Same division of classes in bitches.	
Dachshunds (Wirehaired)	Mr. Pfeil
Open, Miniature 11 lbs. and under at 12 mos. of age and older; Any Eligible. Same division of classes in bitches.	
Foxhounds (English)	Mr. Pfeil
Grand Basset Griffon Vendeens	Mr. Pfeil
Greyhounds	Mr. Pfeil
Harriers	Mr. Pfeil
Ibizan Hounds	Mrs. Pickett
Irish Wolfhounds	Mr. Pfeil
Norwegian Elkhounds	Mr. Pfeil

Otterhounds	Mr. Pfeil
Petits Bassets Griffons Vendeens	Mr. Pfeil
Pharaoh Hounds	Mr. Pfeil
Plott Hounds	Mr. Pfeil
Portuguese Podengo Pequenos	Mr. Pfeil
Redbone Coonhound	Mr. Pfeil
Rhodesian Ridgebacks	Mr. Pfeil
Salukis	Mr. Pfeil
Scottish Deerhounds	Mr. Pfeil
Sloughi	Mr. Pfeil
Treeing Walker Coonhounds	Mr. Pfeil
Whippets	Mr. Pfeil

WORKING BREEDS

Ms. Vicki Seiler-Cushman

Akitas	Ms. Seiler-Cushman
Alaskan Malamutes	Ms. Seiler-Cushman
Anatolian Shepherds	Ms. Seiler-Cushman
Bernese Mountain Dogs	Ms. Seiler-Cushman
Black Russian Terriers	Ms. Seiler-Cushman
Boerboel	Ms. Seiler-Cushman
Boxers	Mrs. McClary*
Open, Brindle; Fawn. Same division of classes in bitches.	
Bullmastiffs	Ms. Seiler-Cushman
Open, Brindle; Any Other Allowed Color. Same division of classes in bitches.	
Cane Corso	Ms. Seiler-Cushman
Chinook	Ms. Seiler-Cushman
Danish-Swedish Farmdog	Ms. Seiler-Cushman
Doberman Pinschers	Ms. Gonzalez
Open, Black; Any Other Allowed Color. Same division of classes in bitches.	
Dogos Argentino	Ms. Seiler-Cushman
Dogue De Bordeaux	Ms. Seiler-Cushman
German Pinschers	Mrs. McClary*
Giant Schnauzers	Ms. Seiler-Cushman
Great Danes	Ms. Seiler-Cushman
Open, Black; Blue; Brindle; Fawn; Harlequin; Mantle; Merle. Same division of classes in bitches.	
Great Pyrenees	Ms. Seiler-Cushman
Greater Swiss Mountain Dogs	Ms. Seiler-Cushman
Komondorok	Ms. Seiler-Cushman
Kuvaszok	Ms. Seiler-Cushman
Leonberger	Ms. Seiler-Cushman
Mastiffs	Ms. Seiler-Cushman
Neapolitan Mastiffs	Ms. Seiler-Cushman
Newfoundlands	Ms. Seiler-Cushman
Portuguese Water Dogs	Ms. Seiler-Cushman
Rottweilers	Ms. Seiler-Cushman
S T. Bernards	Ms. Seiler-Cushman
Samoyeds	Ms. Seiler-Cushman
Siberian Huskies	Ms. Seiler-Cushman
Standard Schnauzers	Ms. Seiler-Cushman
Tibetan Mastiffs	Ms. Seiler-Cushman

TERRIER BREEDS

Mr. Michael Leonard

Airedale Terriers	Mr. Leonard
American Hairless Terriers	Mr. Leonard
American Staffordshire Terriers	Mr. Leonard
Australian Terriers	Mr. Leonard
Bedlington Terriers	Mr. Leonard
Border Terriers	Mr. Leonard
Bull Terriers (Colored)	Mr. Leonard
Bull Terriers (White)	Mr. Leonard
Cairn Terriers	Mr. Leonard
Cesky Terriers	Mr. Leonard
Dandie Dinmont Terriers	Mr. Leonard
Fox Terriers (Smooth)	Mr. Leonard
Fox Terriers (Wire)	Mr. Leonard
Glen of Imaal Terriers	Mr. Leonard
Irish Terriers	Mrs. McClary*
Kerry Blue Terriers	Mr. Leonard
Lakeland Terriers	Mr. Leonard
Manchester Terriers (Standard)	Mrs. Pickett
Miniature Bull Terriers	Mr. Leonard
Miniature Schnauzers	Mr. Leonard
Norfolk Terriers	Mr. Leonard
Norwich Terriers	Mr. Leonard

MONDAY

Parson Russell Terriers	Mr. Leonard
Rat Terriers	Mr. Leonard
Russell Terriers	Mr. Leonard
Scottish Terriers	Mrs. McClary
Sealyham Terriers	Mr. Leonard
Skye Terriers	Mr. Leonard
Soft Coated Wheaten Terriers	Mr. Leonard
Staffordshire Bull Terriers	Mr. Leonard
Teddy Roosevelt Terriers	Mrs. Dykstra-Blum
Welsh Terriers	Mrs. McClary
West Highland White Terriers	Mr. Leonard

TOY BREEDS

Mrs. Angela Pickett

Affenpinschers	Mrs. Pickett
Biewer Terrier	Mrs. Pickett
Brussels Griffons	Mrs. Pickett
Cavalier King Charles Spaniels	Mrs. Pickett
Open, Black & Tan; Blenheim; Ruby; Tri-Color. Same division of classes in bitches.	
Chihuahuas (Long Coat)	Mrs. Pickett
Chihuahuas (Smooth Coat)	Mrs. Pickett
Chinese Crested	Mrs. Pickett
Open, Hairless; Powderpuff. Same division of classes in bitches.	
English Toy Spaniel (Blenheim & Prince Charles)	Mrs. Dykstra-Blum*
English Toy Spaniel (King Charles & Ruby)	Mrs. Dykstra-Blum*
Havanese	Mrs. Pickett
Italian Greyhounds	Mrs. Pickett
Japanese Chin	Mrs. Pickett
Maltese	Mrs. Pickett
Manchester Terriers (Toy)	Mrs. Pickett
Miniature Pinschers	Mrs. Pickett
Papillons	Mrs. Pickett
Pekingese	Mrs. Pickett
Pomeranian	Mrs. Pickett
Open, Red, Orange, Cream and Sable; Black, Brown and Blue; Any Other Allowed Color. Same division of classes in bitches.	
Poodle (Toy)	Mrs. Pickett
Pugs	Mrs. Pickett
Open, Black; Fawn. Same division of classes in bitches.	
Russian Toy	Mrs. Pickett
Russian Tsvetnaya Bolonka	Mrs. Dykstra-Blum*
Shih Tzu	Mrs. Dykstra-Blum*
Silky Terriers	Mrs. Dykstra-Blum*
Toy Fox Terriers	Mrs. Pickett
Yorkshire Terriers	Mrs. Pickett

NON-SPORTING BREEDS

Miss Sandra M. Lex

American Eskimos	Miss Lex
Bichons Frises	Miss Lex
Boston Terriers	Ms. Corr*
Open, under 15 lbs.; 15 lbs and over Same division of classes in bitches.	
Bulldogs	Ms. Corr*
Chinese Shar-Pei	Miss Lex
Chow Chows	Ms. Corr*
Open, Black; Red; Any Other Allowed Color. Same division of classes in bitches.	
Coton de Tulear	Miss Lex
Dalmatians	Miss Lex
Open, Black Spotted; Liver-Spotted. Same divi- sion of classes in bitches.	
Finnish Spitz	Miss Lex
French Bulldogs	Miss Lex
Keeshonden	Miss Lex
Lhasa Apsos	Miss Lex
Lowchen	Miss Lex
Norwegian Lundehunds	Ms. Corr*
Poodles (Miniature)	Miss Lex
Poodles (Standard)	Miss Lex
Schipperkes	Miss Lex
Shiba-Inu	Miss Lex
Tibetan Spaniels	Miss Lex
Tibetan Terriers	Miss Lex

Xoloitzcuintli

Miss Lex

HERDING BREEDS

Ms. Edna Gonzalez

Australian Cattle Dogs	Mrs. Dykstra-Blum
Australian Shepherds	Mrs. McClary
Open, Black; Blue Merle; Red Merle; Red. Same division of classes in bitches.	
Bearded Collies	Mrs. Dykstra-Blum
Beauceron	Mrs. Dykstra-Blum
Belgian Laekenois	Mrs. Dykstra-Blum
Belgian Malinois	Mrs. Dykstra-Blum
Belgian Sheepdogs	Mrs. Dykstra-Blum
Belgian Tervuren	Mrs. Dykstra-Blum
Bergamasco Sheepdogs	Mrs. Dykstra-Blum
Berger Picard	Mrs. Dykstra-Blum
Border Collies	Mrs. Dykstra-Blum
Bouvier Des Flandres	Mrs. Dykstra-Blum
Briards	Mrs. Dykstra-Blum
Canaan Dog	Mrs. Dykstra-Blum
Cardigan Welsh Corgis	Mrs. Dykstra-Blum
Collies (Rough)	Mrs. Dykstra-Blum
Open, Blue; Sable & White; TriColor; White Same division of classes in bitches.	
Collies (Smooth)	Mrs. Dykstra-Blum
Entlebucher Mountain Dogs	Mrs. Dykstra-Blum
Finnish Lapphund	Mrs. Dykstra-Blum
German Shepherd Dogs	Mrs. Dykstra-Blum
Icelandic Sheepdogs	Mrs. Dykstra-Blum
Lancashire Healers	Mrs. Dykstra-Blum
Miniature American Shepherd	Mrs. Dykstra-Blum
Open, Black; Blue Merle; Red Merle; Red. Same division of classes in bitches.	
Mudi	Mrs. Dykstra-Blum
Norwegian Buhunds	Mrs. Dykstra-Blum
Old English Sheepdogs	Mrs. Dykstra-Blum
Pembroke Welsh Corgis	Mrs. Dykstra-Blum
Polish Lowland Sheepdogs	Mrs. Dykstra-Blum
Pulik	Mrs. Dykstra-Blum
Pumik	Mrs. Dykstra-Blum
Pyrenean Shepherds	Mrs. Dykstra-Blum
Shetland Sheepdogs	Mrs. Dykstra-Blum
Open, Sable and White; Any Other Allowed Color. Same division of classes in bitches.	
Spanish Water Dog	Mrs. Dykstra-Blum
Swedish Vallhunds	Mrs. Dykstra-Blum

MISCELLANEOUS CLASS

Mrs. Edy Dykstra-Blum

There will be a puppy, bred by and open class for dogs and bitches in each breed: Alaskan Klee Kai, Bolognese, Czechoslovakian Viciak, Dutch Shepherd, German Spitz, Japan Akitainu, Kai Ken, Norrbottenspets, Peruvian Inca Orchid, Portuguese Podengo, Pyrenean Mastiff, Small Munsterlander, Yakutian Laika.

JUNIOR SHOWMANSHIP COMPETITION

Mrs. Kimberlie Steele-Lopez*

OBEDIENCE

Beginner Novice A	Mrs. Mayborne
Beginner Novice B	Mrs. Mayborne
Novice Class A	Mrs. Mayborne
Novice Class B	Mrs. Mayborne
Open Class A	Mrs. Mayborne
Open Class B	Mrs. Mayborne
Utility Class A	Mrs. Mayborne
Utility Class B	Mrs. Mayborne
Rally Novice A	Miss Lee
Rally Novice B	Miss Lee
Rally Intermediate	Miss Lee
Rally Advanced A	Miss Lee
Rally Advanced B	Miss Lee
Rally Excellent A	Miss Lee
Rally Excellent B	Miss Lee
Rally Master	Miss Lee
Rally Choice	Miss Lee

Southern California Beagle Club

Licensed by the American Kennel Club



Specialty Show & Sweepstakes

Thursday, May 21, 2026

Rancho Mission Viejo Riding Park

30753 Avenida La Pata, San Juan Capistrano, CA 92675

Unbenched, Outdoors Event Hours: 7 AM – 7 PM

This club does not agree to arbitrate claims as set forth on the Official AKC entry form for this event.

OFFICERS

Erich Brandt..... President
 Jane Catz..... Vice-President
 Teresa Caspary..... Treasurer
 Denise Shimasaki..... Secretary

1202 Bernardo Ridge Pl., Escondido, CA 92029 (310) 266-6018

DIRECTORS - Carolyn Blyseth, Connie Long, Belinda LeSage

SHOW COMMITTEE

Show Chairs - Erich Brandt & Jane Catz

jcatz@outlook.com – (310) 497-2037

2301 Glencoe Avenue, Venice, CA 90291

Jennifer Groves, Tammie Gilbert, Teresa Caspary..... Ribbons, Trophies, Gifts
 Connie Long..... Flowers & Decorations
 Club..... Grounds Coordinators
 Belinda LeSage..... General Assist
 Kay Robert..... Lunch Coordinator

JUDGES

1 Specialty Classes, Junior Showmanship, Beginner Puppy 4-6 Months

Mr. Stephen Cabral, PO Box 1891, Duarte, CA 91009

1 Puppy/Veteran Sweepstakes:

Ms. Kay Robert, 316 Day Ave, Bakersfield, CA 93308

2 Specialty Classes, Beginner Puppy 4-6 Months

Ms. Pamela Bruce, Niagara Region CN 003520

Sweepstakes, Jr Showmanship are only offered at the # 1 Specialty

NOHS is offered at this event

Photographer, veterinarian, grooming, parking, classes, ribbons, etc.
can be viewed in the host club portion of the premium list



CERTIFICATION

Permission has been granted by the American Kennel Club for the holding of this event under American Kennel Club rules and regulations. Sheila H. Goffe, Executive Secretary

YOU ARE INVITED - MORNING HOSPITALITY

CATERED LUNCH \$20 to Priscilla Jensen (to be paid day of show)

You are invited to join exhibitors and judges for a boxed lunch from at the setup.

Trophy and General Fund Donations As always, your donations are most appreciated and help to make our specialty SPECIAL!! Please submit:

Zelle or paypal.....socialbeagleclub@gmail.com

Or Mail check made payable to So Cal Beagle Club,

10162 Crailet Dr, Huntington Beach, CA 92646

Our trophies will be coordinated by Tammie Gilbert

Intervariety:

Best of Breed, Best of Opposite Sex, BOBOH, Best Puppy, Best Bred by, Best Veteran

Each variety: Best of Variety, Best of Opposite Sex, Best of Winners, Winners, Reserve, First in each class, Best in Puppy Sweepstakes, First place in each puppy sweepstakes class, Best in Veteran Sweepstakes, each entrant Veteran Sweepstakes, Best Beginner Puppy

Award of Merit may be awarded at the judge's discretion in the following manner: one for 1-5 Champions entered, two for 6-10 champions entered.

BEST PUPPY IN REGULAR CLASSES Best Puppy will be selected from the Puppy Class winners (6-9 & 9-12) following the judging of Best of Breed Competition.

BEST BRED BY EXHIBITOR IN REGULAR CLASSES Best Bred By Exhibitor will be selected from the First Bred By Exhibitor Class winners following the judging of Best of Breed competition.

BEST VETERAN IN REGULAR CLASSES Best Veteran will be selected from the Veteran Class winners following the judging of Best of Breed competition.

Award of Merit, Best of Breed Puppy, Best of Breed Bred by, Best of Breed Veteran – **Dark Green Rosette**

BOB and Best of Variety In Sweepstakes (13", 15" Puppy and Veteran) – **Pink and Light Green Rosette**

BOS to BOB and BOS Variety In Sweepstakes (13", 15" Puppy) – **Lavender Rosette**

Best Owner-Handled in each variety - **Maroon Flat ribbon**

Best Owner-Handled in Show, – **Maroon Rosette**

BOV Beginner Puppy - **Orange Rosette**, BOS Beginner Puppy – **Lavender Rosette**

Puppy Sweepstakes

Classes: Each age division is divided into dogs and bitches in each variety.

6 mos. & under 9 mos., 9 mos. & under 12 mos., 12 mos. and under 18 mos.

1. Entry fee is \$20.00.
2. The Puppy Sweepstakes judging will take place before regular judging.
3. Dogs **MUST** be entered in a regular class.
4. There will be separate sweepstakes for each variety.
5. Entries of champions are not accepted.
6. Professional Handlers may only handle puppies of which they are registered owners.

Veteran Sweepstakes

Classes: Each age division is divided dogs and bitches in each variety.

7 years & older

1. Entry fee is \$20.00.
2. The Veteran Sweepstake is open to all dogs 7 years and older.
3. The Veteran Sweepstake judging will take place before regular judging.
4. The dogs may be spayed or neutered.
5. Dogs DO NOT have to be entered in a regular class.
6. There will be separate sweepstakes for each variety.
7. There will be a run-off for BOB and BOS to BOB between the varieties.
8. Professional Handlers may only handle veterans of which they are registered owners.

PRIZES: All entry fees for both Puppy Sweepstakes and Veteran Sweepstakes will be divided as follows:

30% to be retained by Southern California Beagle Club

60% BOV, 40% BOS

Any unclaimed money will be awarded to the Best of Breed winner so the Club will not retain over 30%

Southern California Ibizan Hound Club

Licensed by the American Kennel Club



1 Specialty Show & Sweepstakes, Junior Showmanship

2 Specialty Show & Sweepstakes, Junior Showmanship

Thursday, May 21, 2026

Rancho Mission Viejo Riding Park
30753 Avenida La Pata, San Juan Capistrano, CA 92675
Unbenched, Outdoors Event Hours: 7 AM – 7 PM

OFFICERS

President – Curtis Freeling
Vice-President – Cathy Hjelm
Treasurer & Secretary – Justin Dannenbring
5570 Fireweed Loop, Helena, MT 59602

Event Chair - Kelley Bell
PO BOX 993, HUMBOLDT, AZ 86329-0993
kcgbell@gmail.com 760-685-1541

JUDGES

1 Specialty Classes

Mr. Michael L. Savage, PO Box 141737, Spokane Valley, AZ 88214

1 Junior Showmanship

Mr. Thomas S. Powers, 4929 Balboa Blvd #636, Encino, CA 91316

1 Puppy/Veteran Sweepstakes

Mr. Robert Newman, 719 E Tularosa Ave, Orange, CA 92866

2 Specialty Classes, Junior Showmanship

Mr. Garry K. Newton, PO Box 2712, Anaheim, CA 92814

2 Puppy/Veteran Sweepstakes

Mr. Thomas S. Powers, 4929 Balboa Blvd #636, Encino, CA 91316

NOHS is offered at this event

Photographer, veterinarian, grooming, parking, classes, ribbons, etc.
can be viewed in the host club portion of the premium list



CERTIFICATION

Permission has been granted by the American Kennel Club for the holding of this event under American Kennel Club rules and regulations. Sheila H. Goffe, Executive Secretary

****Chapter 11, Section 8: of the “Rules Applying to Dog Shows” provides that a neutered male may be entered as a Veteran Dog in the Veteran Dog Class and a spayed bitch may be entered as a Veteran Bitch in the Veteran Bitch Class.****

PUPPY SWEEPSTAKES ELIGIBILITY: The Sweepstakes is open to all Ibizan Hounds, who, on the day of the show, will be at least 6 months and under 18 months of age. All dogs entered in Sweepstakes MUST BE entered in a Regular Class at this show. Entry fee is \$18.00 in addition to the Regular Entry Fee. Entry in the Sweepstakes must be made at the same time and on the same entry form as for the Regular Classes. Write SWEEPSTAKES in the “Additional Class” space and state the AGE DIVISION.

PUPPY SWEEPSTAKES CLASSES

The following age division classes are offered for both Dogs and Bitches:

6 months and under 9 months; 9 months and under 12 months; 12 months and under 18 months

VETERAN SWEEPSTAKES ELIGIBILITY: The Veteran Sweepstakes is open to all Ibizan Hounds, who, on the day of the show, will be at least 7 years of age or older. Dogs entered in Veteran Sweepstakes NEED NOT be entered in any other class at this show. Entry fee is \$18.00. Write VETERAN SWEEPSTAKES in the “Additional Class” space and state the AGE DIVISION.

VETERAN SWEEPSTAKES CLASSES

The following age division classes are offered for both Dogs and Bitches:

7 years and older

DIVISION OF SWEEPSTAKES STAKES ~ PUPPY & VETERAN

35% of the fees are retained by SCIHC to help defray the expenses of these classes. The remainder is divided as follows:

First Place ~ 40%; Second Place ~ 30%; Third Place ~ 20%; and Fourth Place ~ 10%.

All prize money is paid in the ring to the person handling the dog. Undistributed prize money due to absentees is retained by the Club.

Rosettes Awarded for Best in Sweepstakes and Best of Opposite Sex to Best in Sweepstakes

Trophies will be dog related items BOB, BOW, BOS, Winners, Select, BOBOH, Best Puppy

20th Annual Specialty Show

Cavalier King Charles Spaniel Club of Southern California

Licensed by the American Kennel Club



Rancho Mission Viejo Riding Park
30753 Avenida La Pata, San Juan Capistrano, CA 92675

Outdoor/Unbenched. Event Hours: 6 am to 7 pm.

Thursday, May 21, 2026

Judges

Conformation

Mr. Michael Leonard

196 Kimmage Rd W., Dublin, Ireland 12

Sweepstakes (Puppy and Veteran)

Mrs. Kim Baillie

10100 Clinton Ave S

Bloomington, MN 55420

Ring Steward: Ron Dickey

PHOTOGRAPHER - Vicki Holloway Hollowayphoto@mac.com www.Hollowayphoto.com



NOHS is offered at this event.

CERTIFICATION

Permission has been granted by the American Kennel Club for the holding of this event under American Kennel Club rules and regulations.

Sheila H. Goffe, Executive Secretary

OFFICERS:

President – Ted Crawford
Vice President – Marji McCormick
Treasurer – Emily Wensel
Secretary – Stephanie Hart

20342 Shadow Mountain Road, Walnut, CA 91789

BOARD OF DIRECTORS

Jim Barnfather, Jennifer Espinosa, Sandra Harrison, Sue Miller, Rita Rudkin, Jan Talmy

SHOW CHAIR

Marji McCormick

837 Hemlock Ridge Ct, Simi Valley, CA 93065 805-559-0985 marjimccormick837@gmail.com

COMMITTEES

Morning Hospitality: Gail Katz

Trophy Chair: Jackie Check and Marji McCormick

Ribbons: Emily Wensel and Marji McCormick

Judges Basket: Marji McCormick

Judges Gifts: Marji McCormick

SWEEPSTAKES

Sweepstakes classes are open to all Cavalier King Charles Spaniels, who, on the day of the show, will be at least 6 months and under 18 months of age. Champions of Record are not eligible. All entries in the Sweepstakes must also be entered in a regular class at this show. Sweepstakes classes will be judged prior to the regular breed classes. Indicate "Sweepstakes" and age division on the regular entry form under additional classes.

NOTE: Sweepstakes entries may not be shown by professional handlers unless the handler is the owner of the entry.

PUPPY SWEEPSTAKES CLASSES:

The following age division classes are offered for both Dogs and Bitches:

6 and under 9 months; 9 and under 12 months; 12 and under 15 months; 15 and under 18 months

Veteran Sweepstakes Rules: Sweepstakes classes are open to all Cavalier Charles Spaniels, who, on the day of the show, will be at least 7 years of age. All entries in the Sweepstakes may or may not be entered in a regular class at this show. Sweepstakes classes will be judged prior to the regular breed classes. Indicate "Sweepstakes" and age division on the regular entry form under additional classes.

NOTE: Sweepstakes entries may not be shown by professional handlers unless the handler is the owner of the entry.

VETERAN SWEEPSTAKES CLASSES:

The following age division classes are offered for both Dogs and Bitches:

7 and under 9 years; 9 years and under 11 years, and 11 years and older

DIVISION OF STAKE Division of Stake for Puppy and Veteran Sweepstakes

30% of each entry will be retained by the club. 10% of the remaining fee will be divided equally between Best in Sweepstakes (5%) and Best of Opposite Sex to Best in Sweepstakes (5%). The remainder of the entry fee in each class division will be divided as follows:

First Prize 40% of all entry fees in each respective class

Second Prize 30% of all entry fees in each respective class

Third Prize 20% of all entry fees in each respective class

Fourth Prize 10% of all entry fees in each respective class

Winners of Sweepstakes classes will compete for Best In Sweepstakes and Best of Opposite Sex to Best In Sweepstakes. The remaining prize money will be divided evenly between Best In Sweepstakes and Best of Opposite Sex In Sweepstakes. Any undistributed funds revert to the club.

CLASSIFICATION

Classes for this specialty will follow the classes for the all breed shows with the exception of:
12-18 month class into 12 and under 15 months; 15 and under 18 months

Veteran 7 and under 9 years of age; 9 and under 11 years of age, 11 years of age and older.

NON-REGULAR CLASSES, INVOLVING MULTIPLE DOG ENTRIES

Brace Class - For two dogs of the same recognized breed or variety that are similar in appearance, performing in unison, and presented by a maximum of two handlers. Both dogs competing in brace competition must have at least one common owner.

Best Puppy – winners of the 6-9 mo, 9-12 mo and BBE puppy compete for Best Puppy in Show following the judging of Best of Breed & Award of Merit Competition. Only dogs not defeated are eligible to compete.

Best Bred by Exhibitor – Best Bred By Exhibitor will be selected from the Bred By Exhibitor Adult Class winners, and the Bred by Exhibitor Puppy Class winners, following the judging of Best of Breed & Award of Merit Competition. Only dogs not defeated in the Bred By Classes are eligible to compete.

Award of Merit – At the conclusion of Best of Breed, after picking Best of Breed and Best of Opposite Sex to Best of Breed, the Judge at his/her discretion may award an Award of Merit to a maximum of 10% of the Best of Breed entry. Those selected shall receive a Red, White & Blue Rosette.

Best Veteran - Selected from the first place winners in 7 and under 9 years; 9 years of age and under 11 years of age, and 11 years and older dogs and bitches.

TROPHIES

The Cavalier King Charles Spaniel Club Southern California, through the generosity of members and friends, offers the following dog-related items for:

Best in Specialty Show, Best of Opposite Sex, Best of Winners, Best of Breed Owner Handler, Winners Dog, Winners Bitch, Reserve Winners Dog, Reserve Winners Bitch, Select Dog, Select Bitch, Award of Merit, Best Bred by Exhibitor, Best Puppy, Best Veteran, First Stud Dog, First Brood Bitch, First Brace

The following placements will receive:

First Place through Fourth Place in all Regular and Non-Regular Classes – Dog-related items

Best Puppy in Sweepstakes, Best Opposite Sex Puppy in Sweepstakes – Dog-related items

Best Veteran in Sweepstakes, Best Opposite Sex Veteran in Sweepstakes – Dog-related items

First Place through Fourth Place in all Sweepstakes Classes – Dog-related items

Rosettes will be given for all class placements.



BISS Commemorative Trophy

BEST IN SPECIALTY SHOW Trophy -The Cavalier King Charles Spaniel Club of Southern California Commemorative donated by Patricia Kanan, Torlundy Cavaliers & Cindy Huggins Courtlore Cavaliers. This commemorative is an Artist's Proof of the first DannyQuest bronze sculpted statue depicting two Cavalier King Charles Spaniels on a base. This piece will remain in permanent possession of the Club.



Founders Trophy

BEST PUPPY IN SHOW Founders Trophy – The Cavalier King Charles Spaniel Club of Southern California Commemorative donated in honor of the founding members of the club. This commemorative is a DannyQuest bronze sculpted statue depicting a Cavalier King Charles Spaniel mom and her puppies. This piece will remain in permanent possession of the Club.

City of Angels Pomeranian Club

Licensed by the American Kennel Club



1 Specialty Show & Sweepstakes

2 Specialty Show

Rancho Mission Viejo Riding Park
30753 Avenida La Pata, San Juan Capistrano, CA 92675
Thursday, May 21, 2026

Unbenched, Outdoors Event Hours: 7 AM – 7 PM

OFFICERS

President – Carol Silverberg
Vice-President – Leesa Molina
Treasurer – Alane Levinsohn
Secretary – Lynn Wyza
12 Del Fiore, Lake Elsinore, CA 92532
Board of Directors – Georgia Hoenig, Kay Feckok, Daniel Yona
Event Committee
Show Chair – Leesa Molina
4804 Laurel Canyon # 125, Studio City, CA 91607 818-383-3391 leesa.molina@att.net
And officers and board of directors

Ring Steward – Lynn Ehrenberg

JUDGES

1 Specialty Classes

Mr. Darryl Vice, 22075 Skyview Dr, Palm Springs, CA 92262

1 Puppy/Veteran Sweepstakes

Mr. Charles H. Bridges Jr., 12558 Telephone Ave., Chino, CA 91710

2 Specialty Classes

Mr. Glen Lajeski, 32000 Pine Mountain Rd., Cloverdale, CA 95425

2 Puppy/Veteran Sweepstakes

Mrs. Geneva Bridges, 12558 Telephone Ave., Chino, CA 91710

NOHS is not offered at this event

Photographer, veterinarian, grooming, parking, classes, ribbons, etc.
can be viewed in the host club portion of the premium list



CERTIFICATION

Permission has been granted by the American Kennel Club for the holding of this event under American Kennel Club rules and regulations.
Sheila H. Goffe, Executive Secretary

Show chair and event committee are eligible to compete
Sweepstakes, Veteran Sweepstakes \$25.00

All classes follow to the classes listed in Combined Classification section of this premium list, with the exception of the following.

Veteran (divided by sex): 6 years and older

Chapter 11, Section 8: of the "Rules Applying to Dog Shows" provides that a neutered male may be entered as a Veteran Dog in the Veteran Dog Class and a spayed bitch may be entered as a Veteran Bitch in the Veteran Bitch Class."

Additional awards: 2 Award of Merit, Best Puppy, Best Bred by, Best Veteran

All prize money is paid in the ring to the person handling the dog. Undistributed prize money due to absentees is retained by the Club.

SWEEPSTAKES

The sweepstakes is open to all Pomeranians who, on the day of the show, will be at least 6 months and under 18 months of age. Professional handlers and champions of record are not eligible to compete. Dogs must also be entered in one of the regular conformation classes. Indicated sweepstakes and age division in the Additional Classes space on the entry form.

Classes (divided by sex): 6 & under 9; 9 & under 12; 12 & under 15; 15 & under 18 months
Class winners will compete for Best and BOS.

VETERAN SWEEPSTAKES

The sweepstakes is open to all Pomeranians who, on the day of the show, will be at least 6 years or older. Neutered males and spayed bitches are eligible. Champions are eligible. Professional handlers are not eligible. Dogs need not be entered in one of the regular conformation classes. Indicated sweepstakes and age division in the Additional Classes space on the entry form.

Classes (divided by sex): 6 years and older
Class winners will compete for Best and BOS.

All entry money in each class will be divided as follows (rounded to the nearest dollar). Any undistributed funds revert to the club. 35% will be retained by the club.
35% goes to Best, 30% goes to BOS

Trophies:

Antique glass and china BOB, BOW, BOS, Winners, Reserve, Select, and for each placement 1 to 4

Rosettes will be offered for BOB, BOW, BOS, Winners, 1st Veteran Dog, 1st Veteran Bitch.



DALMATIAN CLUB OF SOUTHERN CALIFORNIA

Licensed by the American Kennel Club

94th Specialty Show, Junior Showmanship, Sweepstakes, Veteran Sweepstakes

**Rancho Mission Viejo Riding Park
30753 Avenida La Pata, San Juan Capistrano, CA 92675**

Saturday, May 23, 2026

Unbenched, Outdoors Event Hours: 7 AM – 7 PM
Entries for each of these events are limited to 100.

OFFICERS

PresidentWalt Freshour
Vice PresidentSuzi Wahl
TreasurerCarrie Jordan
Recording Secretary Diane Rosenberg
Corresponding Secretary Debbie Goddard
PO Box 2005, Rancho Santa Fe, CA 92067

DIRECTORS

Kathy Cavanaugh Teresa Bailey Laura Rosenberg Jill Harris

EVENT CHAIR

Show Chairperson..... Debbie Goddard
PO Box 2005, Rancho Santa Fe, CA 92067 ranchodal@aol.com 619-417-6913

JUDGES

specialty– Janice McClary
P. O. Box 5013, Hacienda Heights, CA 91745
and junior show – Carrie Jordan
11931 Wutzke St, Garden Grove, CA 92845
sweepstakes, veteran sweepstakes – Loran Morgan
3939 Nobel Dr Unit 147, San Diego, CA 92122

NOHS is offered at this event

Photographer, veterinarian, grooming, parking, classes, ribbons, etc.
can be viewed in the host club portion of the premium list



CERTIFICATION

Permission has been granted by the American Kennel Club for the holding of this event under American Kennel Club rules and regulations.
Sheila H. Goffe, Executive Secretary

2 Awards of Merit may be given at the discretion of the judge.

Brace –must have at least one common owner

SWEEPSTAKES

Classes (divided by sex): 6 & under 9 mos.; 9 & under 12 mos., 12 & under 18 mos.; 18 & under 24 mos

The Dalmatian Club of Southern California (DCSC) offers sweepstakes. Sweepstakes Rules—Sweepstakes is open to all dogs and bitches six (6) months of age and under twenty-four (24) months of age on the day of the show, except for Champions of Record which are not eligible to compete. Professional handlers may show only dogs they own. All entries in Sweepstakes MUST be entered in a regular class at the show, and entries must be made at the same time that the regular entries are made and on the same entry blank under “Additional Classes”. The judge shall select a Best Junior in Sweepstakes (from 6-9 and 9-12 class winners both sexes) and a Best Senior in Sweepstakes (from 12-18 and 18-24 class winners both sexes), and then from these winners shall select a Best in Sweepstakes.

VETERAN SWEEPSTAKES

Classes (divided by sex): 7 & under 10 years; 10 years and older

Veterans Sweepstakes Rules—Entries in Veteran Sweepstakes do not have to be entered in a regular class at this show. Classes are open to dogs that have been spayed or neutered. Professional handlers may show only dogs they own.

Prize Money 35% of total entry fees in each class are retained to cover expenses. The remainder of the entry fees for each class will be divided as follows: First - 35% Second - 15% Third - 10% Fourth -5%. Rounded to the nearest dollar.

ROSETTES: The Dalmatian Club of Southern California offers rosettes at each specialty for Best of Breed, Best of Winners, Best of Opposite Sex to Best of Breed, Select, Winners, Reserve Winners, Awards of Merit, Best Bred-by Exhibitor, Best Veteran, Best Owner-Handled, Best Puppy, Best in Sweepstakes, Best Junior in Sweepstakes, Best Senior in Sweepstakes, Best in Veteran Sweepstakes, Best of Opposite Sex in Veteran Sweepstakes, First Brace, First Stud Dog and First Brood Bitch; Best Junior Handler and Reserve Best Junior Handler.

TROPHIES - Through the generosity of its donors, whom the club sincerely thanks, the Dalmatian Club of Southern California offers the following prizes and trophies. Trophies not claimed will become the property of DCSC. Dalmatian-themed items for: Best of Breed, Best of Opposite Sex, Best of Winners, Select Dog & Bitch, Best Owner-Handled, Best Bred-By, Best Puppy, Best Veteran, Winners Dog & Bitch, Best in Sweepstakes, Best in Veteran Sweepstakes, Best Opposite Sex in Veteran Sweepstakes, Best Junior & Senior in Sweepstakes, and Best Junior Handler.

The Dalmatian Club of America, Inc. (DCA) offers through the office of the Corresponding Secretary, Ms. Toni Linstedt, the DCA bronze medallion to be awarded to the Best of Breed winner at each specialty provided there is a conformation entry of 25 or more Dalmatians, and the winner is owned or co-owned by a member in good standing of the DCA.

Southern California Bouvier des Flandres Club, Inc.

(Licensed by the American Kennel Club)



45th Annual Specialty Shows, Sweepstakes, Veteran Sweepstakes,
Junior Showmanship, NOHS, 4-6 Month Beginner Puppy Competition

Thursday, May 21, 2026

Rancho Mission Viejo Riding Park
30753 Avenida La Pata, San Juan Capistrano, CA 92675

Show Hours: 7:00 A.M. – 11:30 P.M. Unbenched

Entries for these events are limited to 100.

OFFICERS

President..... Terry Burian-Creel
Vice-President La Kimba Bradsbery
Treasurer Dayle Sullivan
Secretary..... Angelina Long

30310 Rolling Hills Dr., Valley Center, CA 92082

BOARD OF DIRECTORS

Maureen Benetti, Janice Byrd, Adrienne Hochee, Tammy Saltos

SHOW COMMITTEE

Janice Byrd, Show Chair
6165 N. Grand Canyon Dr., Las Vegas NV 89149
(702) 321-9605 Email: janice.l.byrd@gmail.com

Trophies/Ribbons Mychel Ankeny & Dayle Sullivan
Hospitality..... Adrienne Hochee
Emergency & Safety..... Bruce Edens

Ring Steward – Larry Paige

JUDGES

Specialty, Junior Showmanship, BPUP Mrs. Nancy J. Eilks
N5689 County Road S. Lake Mills, WI 53551-9554
Sweepstakes & Veteran Sweepstakes Mrs. Pat Murray

12271 Germany Rd., Fenton, MI 48430

NOHS is offered at this event



CERTIFICATION

Permission has been granted by the American Kennel Club for the holding of this event under American Kennel Club rules and regulations. Sheila H. Goffe, Executive Secretary

TROPHIES Through the generosity of its members and friends, The Southern California Bouvier des Flandres Club will offer the following trophies for the following classes. A complete list of donors to the trophy fund will appear in the catalog.

Regular Classes: - 1st thru 4th; Veteran Dog/Bitch - 1st thru 4th - Assorted Dog Equipment

Best of Breed, Best of Opposite Sex, Best of Winners - Cutting/Serving Board

Winners Dog/Bitch - Cutting/Serving Board

Select, Award of Merit 1 & 2, Reserve Winners Dog/Bitch - Cutting/Serving Board

Best Bred by Exhibitor - Leather Leash

Best Altered – Large Cooling Mat; Best Owner-Handler - Waterproof Dog Blanket

Best Veteran - Leather Leash

Best Puppy, Best Opposite Puppy - Grooming Tote/Tools

Best In Sweepstakes, BOS Sweepstakes - Small Cooling Mat

Best Veteran Sweepstakes, BOS Veteran Sweepstakes - Cooling Throw

Best Junior Handler - Gift Certificate

Best 4 - 6 Month Puppy, BOS 4 - 6 Month Puppy – Pet Splash Pad

Best Brood Bitch, Best Stud Dog, Best Brace – Wine Tumbler Set

Classification in addition to the classes listed at the all-breed show.

12-18 class split: 12 and under 15 months; 15 and under 18 months.

Veteran (divided by sex) - 6 years of age and older.

Brace Class – For two dogs of the variety of breed with at least one common owner.

Award of Merit – Following the award for Best of Breed, the judge may at their discretion, choose to award up to two Award of Merit winners from the remaining entrants.

Best In Puppy Class: Best Puppy and Best Opposite sex to Best Puppy will be selected from the Regular Puppy Class winners following the judging of Best of Breed Competition. Only dogs not defeated in a Puppy Class are eligible to compete. (If the winner of a class is not present for judging of the Best Puppy, the 2nd place in the class may not take its place). If Best of Winners or Best of Breed is from the Puppy Class, it is automatically the Best Puppy in Classes.

Best Bred by Exhibitor – Best Bred by Exhibitor will be selected from the Bred by Exhibitor Class winners, and the Bred by Exhibitor Puppy Class winners, following the judging of Best of Breed & Award of Merit Competition. Only dogs not defeated in the Bred by Classes are eligible to compete

Altered Dogs/Bitches: This is a class open to all dogs who are 6 months of age or older and who have been spayed or neutered, but who otherwise would be eligible to show in conformation classes. The winners of these classes will compete for Best Altered.

PUPPY SWEEPSTAKES - Sweepstakes classes are open to all dogs and bitches at least six months of age and not over eighteen months of age on the day of the Specialty and are open to members or non-members of the SCBdFC Inc. Judging will be held before the Regular Classes. Each entry is to indicate Sweepstakes (state which age division) on a regular entry form in the space for additional classes. All Sweepstakes entries must be entered in a Regular Class at this Specialty. Classification (divided by sex): 6 & Under 9 mos.; 9 & Under 12 mos.; 12 & Under 18 mos.

VETERAN SWEEPSTAKES - Sweepstakes classes are open to all dogs and bitches at least six years of age on the date of the show and are open to members and non-members of the SCBdFC, Inc. Entry of Veteran Sweepstakes does not have to be entered in a regular class at this show. Each entry is to indicate Veteran Sweepstakes (state an age division) on a regular entry form in the space for additional classes. Classification (divided by sex): 6 and 9 under yrs, 9 and 11 under yrs, 11 yrs and older.

Cash Prizes: The Sweepstakes entry fees will be divided for prizes. 10% will be retained by the SCBdFC, Inc. Entry fees will be divided into two equal halves. The first 50% will be divided with 60% going to Best In Puppy/Veteran Sweepstakes and 40% going to Best of Opposite Sex to Best In Puppy/Veteran Sweepstakes. The remaining 50% will be divided among First through Fourth place in each class on a percent- age basis of 40% 30% 20% 10%.

All ribbons will be upgraded to rosettes.

SCBdFC reserves the right to make award substitutions of equal or greater value if listed award is not available.

Host club information: for hotels, grooming, parking, loading/unloading, electrical power, photographers, vendors and anything else regarding host club information, please refer to the host club premium list.

CATALOG ADVERTISING

Full Page / Exhibitors-Breeders..... \$50.00 Half Page / Exhibitors-Breeders..... \$25.00.

Price includes one picture, (Can be a composite). Payment in full must accompany Camera-ready document with checks payable to SCBdFC or pay online (+\$2.00 fee) at: <https://www.scbdfc.com/catalog-advertising>

All ads must be camera ready - photo and copy (text). No Design Services available.

Word, Pages (Apple), JPG, PSD, PDF

DEADLINE FOR ADVERTISING April 30, 2026

GARY WOOD, 4148 Sea View Dr., Los Angeles, CA 90065, gwood@garyewood.com
323-243-3722

TRI-VALLEY WORKING DOG CLUB of Pinon Hills, Inc.

(Licensed by the American Kennel Club)



**WORKING GROUP DOG SHOW,
ALL BREED OBEDIENCE & ALL BREED RALLY TRIAL
SWEEPSTAKES/VETERAN SWEEPSTAKES at FIRST SHOW ONLY**

**WORKING GROUP DOG SHOW,
ALL BREED OBEDIENCE & ALL BREED RALLY TRIAL
BRED BY EXHIBITOR GROUP, NOHS at SECOND SHOW ONLY**

Help us celebrate blue collar working dogs by wearing denim

Thursday, May 21, 2026

Rancho Mission Viejo Riding Park

30753 Avenida La Pata, San Juan Capistrano, CA 92675

Show Hours: 7:00 A.M. – 11:30 P.M. Unbenched

Obedience and Rally classes open to all breeds, not just Working breeds.

Conformation, obedience, jr show is limited to 600 entries per event.

Rally is limited to 75 entries per event.



CERTIFICATION

Permission has been granted by the American Kennel Club for the holding of this event under American Kennel Club rules and regulations. Sheila H. Goffe, Executive Secretary

OFFICIAL PHOTOGRAPHER

Bettina Bienefeld (714) 745-9841 www.bestinshowphoto.com

“Only the listed official photographer may take win pictures. A win picture is defined as consisting of a judge, dog and ribbons. Please do not photograph the Judge beside David’s sign box.”

THURSDAY ALL BREED OBEDIENCE AND RALLY

Two Trials

Tri-Valley Working Dog Club of Pinon Hills is pleased to announce its obedience and rally classes are now open to all AKC-recognized breeds including dogs enrolled with the AKC Canine Partners program. TVWDC offers Rosettes for High in Trial and High Combined Score as well as ribbons for placements 1-4 to dogs from the Working Group AND offers an additional set of rosettes and ribbons for all AKC-recognized breeds including dogs enrolled in the AKC Canine Partners program. While a working group dog may earn two ribbons from both groups of competitors as described above, only one qualifying score can be gained per AKC rules and regulations.

OFFICERS

President.....Pam Leighton
Vice President.....Christopher Delisi
TreasurerPenny Smith
SecretaryDebbie Lynn

c/o P.O. Box 720585, Pinon Hills, CA 92372

BOARD OF DIRECTORS

Dick Greaver, Kim Ocampo

SHOW COMMITTEE

Show ChairmanPam Leighton
P.O. Box 720585, Pinon Hills, CA 92372 (951) 544-6279

Assistant Chairman..... Angel White

Obedience and Rally Trial Chairman.....Chris Delisi

And All Officers and Members of the Board

COMMITTEE CHAIRMEN

Show Committee Chair, Catalog, Judges Hospitality, Publicity, SweepstakesPam Leighton

Decorations..... Terry Denny-Combs

Grounds..... Dick Greaver

Raffle Angel White

Ring Hospitality.....Debbie Lynn and Penny Smith

Trophies.....Robin Blackburn

Chief Conformation Steward Lafayette McGowan

Chief Obedience Steward Pat Ames

As a courtesy to our exhibitors, Tri-Valley Working Dog Club's
Show Chairman will not exhibit dogs at this event.

TriValley Working Dog Club - Thursday Judges

Ms. Maria Arechaederra PO Box 868, Silverado, CA 92676
Mrs. Catherine Bell 1158 Highgrove Garden Way, Knoxville, TN 37922
Ms. Cathleen Caballero 1314 Sundrop Cove, Round Rock, TX 78665
Dr. Jennifer Cabral PO Box 1891, Duarte, CA 91009
Mr. Stephen M. Cabral PO Box 1891, Duarte, CA 91009
Ms. Kimberly Cardona 6940 Sykes Ln, Polk City, FL 33868
Ms. Wendy Corr 161 Pebble Ln, Alamo, CA 94507
Ms. Pam Henson 135 Julian St, Ramona, CA 92065
Ms. Pat M. Jenkins P.O. Box 417, Richmond, UT 84333
Ms. Donna Meade 8211 San Angelo Dr Apt M17, Huntington Beach, CA 92647
Mr. William C. Stebbins 1002 Nw Tuscany Dr, Port St Lucie, FL 34986
Ms. Patricia A. Strong 7721 Cardinal Cv N, Indianapolis, IN 46256

*Judge was Provisional/Permit status for the assignment on the date the panel was approved by AKC.

#1 Tri-Valley Working Dog Club

WORKING BREEDS

Mr. William C. Stebbins

Akitas.....	Mrs. Bell
Akitas Swp.....	Ms. Arechaederra
Akitas Vet Swp.....	Ms. Arechaederra
Alaskan Malamutes.....	Mrs. Bell
Alaskan Malamutes Swp.....	Ms. Arechaederra
Alaskan Malamutes Vet Swp.....	Ms. Arechaederra
Anatolian Shepherds.....	Ms. Jenkins
Anatolian Shepherds Swp.....	Ms. Corr
Anatolian Shepherds Vet Swp.....	Ms. Corr
Bernese Mountain Dogs.....	Ms. Jenkins
Bernese Mt. Dog Swp.....	Dr. Cabral
Bernese Mt. Dog Vet Swp.....	Dr. Cabral
Black Russian Terriers.....	Ms. Cardona*
Black Russian Terriers Swp.....	Ms. Arechaederra
Black Russian Terriers Vet Swp.....	Ms. Arechaederra
Boerboel.....	Ms. Jenkins
Boerboel Swp.....	Mr. Cabral
Boerboel Vt Swp.....	Mr. Cabral
Boxers.....	Mrs. Bell
Open, Brindle; Fawn. Same division of classes in bitches.	
Boxers Swp.....	Ms. Corr
Boxers Vet Swp.....	Ms. Corr
Bullmastiffs.....	Ms. Jenkins
Open, Brindle; Any Other Allowed Color. Same division of classes in bitches.	
Bullmastiffs Swp.....	Ms. Arechaederra
Bullmastiffs Vet Swp.....	Ms. Arechaederra
Cane Corso.....	Mr. Stebbins
Cane Corso Swp.....	Mr. Cabral
Cane Corso Vet Swp.....	Mr. Cabral
Chinook.....	Ms. Jenkins
Chinook Swp.....	Mr. Cabral
Chinook Vet Swp.....	Mr. Cabral
Danish-Swedish Farmdog.....	Ms. Jenkins
Danish-Swedish Farmdog Swps.....	Ms. Arechaederra
Danish-Swedish Farmdog Vt Sw.....	Ms. Arechaederra
Doberman Pinschers.....	Ms. Cardona
Open, Black; Any Other Allowed Color. Same division of classes in bitches.	
Doberman Pinschers Swp.....	Ms. Corr
Doberman Pinschers Vet Swp.....	Ms. Corr
Dogos Argentino.....	Mr. Stebbins
Dogos Argentino Sweepstakes.....	Mr. Cabral
Dogos Argentino Vet Sweepstakes.....	Mr. Cabral
Dogue De Bordeaux.....	Mr. Stebbins
Dogues De Bordeaux Swp.....	Ms. Arechaederra
Dogues De Bordeaux Vet Swp.....	Ms. Arechaederra
German Pinschers.....	Mr. Stebbins
German Pinschers Swp.....	Ms. Corr
German Pinschers Vet Swp.....	Ms. Corr
Giant Schnauzers.....	Mr. Stebbins
Giant Schnauzers Swp.....	Ms. Henson
Giant Schnauzers Vet Swp.....	Ms. Henson
Great Danes.....	Ms. Cardona*
Open, Black; Blue; Brindle; Fawn; Harlequin; Mantle; Merle. Same division of classes in bitches.	
Great Danes Sweepstake.....	Ms. Henson
Great Danes Vet Swp.....	Ms. Henson
Great Pyrenees.....	Mrs. Bell
Great Pyrenees Swp.....	Ms. Corr
Great Pyrenees Vet Swp.....	Ms. Corr
Greater Swiss Mountain Dogs.....	Ms. Jenkins
Greater Swiss Mountain Swp.....	Ms. Arechaederra
Greater Swiss Mountain Vet Swp.....	Ms. Arechaederra
Komondorok.....	Ms. Jenkins
Komondorok Swp.....	Mr. Cabral
Komondorok Vet Sweepstakes.....	Mr. Cabral

Kuvaszok.....	Ms. Jenkins
Kuvaszok Swp.....	Ms. Cardona
Kuvaszok Vet Swp.....	Ms. Cardona
Leonberger.....	Mrs. Bell
Leonberger Swp.....	Ms. Corr
Leonberger Vet Swp.....	Ms. Corr
Mastiffs.....	Mrs. Bell
Mastiffs Swp.....	Ms. Arechaederra
Mastiffs Vet Swp.....	Ms. Arechaederra
Neapolitan Mastiffs.....	Ms. Cardona*
Neapolitan Mastiffs Swp.....	Ms. Arechaederra
Neapolitan Mastiffs Vet Swp.....	Ms. Arechaederra
Newfoundlands.....	Mrs. Bell
Newfoundlands Swp.....	Ms. Henson
Newfoundlands Vet Swp.....	Ms. Henson
Portuguese Water Dogs.....	Ms. Cardona*
Portuguese Water Dogs Swp.....	Ms. Henson
Portuguese Water Dogs Vet Swp.....	Ms. Henson
Rottweilers.....	Ms. Jenkins
Rottweilers Swp.....	Ms. Corr
Rottweilers Vet Swp.....	Ms. Corr
S T. Bernards.....	Mr. Stebbins
S T. Bernards Swp.....	Ms. Corr
S T. Bernards Vet Swp.....	Ms. Corr
Samoyeds.....	Ms. Jenkins
Samoyeds Swp.....	Ms. Cardona
Samoyeds Vet Swp.....	Ms. Cardona
Siberian Huskies.....	Ms. Cardona*
Siberian Huskies Swp.....	Ms. Henson
Siberian Huskies Vet Swp.....	Ms. Henson
Standard Schnauzers.....	Ms. Cardona*
Standard Schnauzers Swp.....	Mr. Cabral
Standard Schnauzers Vet Swp.....	Mr. Cabral
Tibetan Mastiffs.....	Mrs. Bell
Tibetan Mastiffs Swp.....	Ms. Cardona
Tibetan Mastiffs Vet Swp.....	Ms. Cardona

MISCELLANEOUS CLASS

Ms. Pat M. Jenkins

There will be a puppy, bred by and open class for dogs and bitches in each breed: Czechoslovakian Vlcik, Kai Ken, Pyrenean Mastiff, Yakutian Laika.

JUNIOR SHOWMANSHIP COMPETITION

Ms. Pat M. Jenkins

OBEDIENCE

Beginner Novice A.....	Ms. Caballero
Beginner Novice B.....	Ms. Caballero
Novice Class A.....	Ms. Caballero
Novice Class B.....	Ms. Caballero
Novice, Graduate.....	Ms. Caballero
Novice, Preferred.....	Ms. Caballero
Open Class A.....	Ms. Caballero
Open Class B.....	Ms. Caballero
Open, Graduate.....	Ms. Strong
Open, Preferred.....	Ms. Caballero
Utility Class A.....	Ms. Strong
Utility Class B.....	Ms. Strong
Utility, Preferred.....	Ms. Strong
Versatility Class.....	Ms. Strong
Rally Novice A.....	Ms. Meade
Rally Novice B.....	Ms. Meade
Rally Intermediate.....	Ms. Meade
Rally Advanced A.....	Ms. Meade
Rally Advanced B.....	Ms. Meade
Rally Excellent A.....	Ms. Meade
Rally Excellent B.....	Ms. Meade
Rally Master.....	Ms. Meade
Rally Choice.....	Ms. Meade

#2 Tri-Valley Working Dog Club

WORKING BREEDS

Mrs. Catherine Bell

Akitas.....	Ms. Cardona*
Alaskan Malamutes.....	Ms. Jenkins
Anatolian Shepherds.....	Mr. Stebbins
Bernese Mountain Dogs.....	Mr. Stebbins
Black Russian Terriers.....	Ms. Jenkins
Boerboel.....	Ms. Cardona*
Boxers.....	Ms. Cardona
Open, Brindle; Fawn. Same division of classes in bitches.	
Bullmastiffs.....	Ms. Cardona*
Open, Brindle; Any Other Allowed Color. Same division of classes in bitches.	
Cane Corso.....	Ms. Cardona*
Chinook.....	Mrs. Bell
Danish-Swedish Farmdog.....	Ms. Cardona*
Doberman Pinschers.....	Ms. Jenkins
Open, Black; Any Other Allowed Color. Same division of classes in bitches.	
Dogos Argentino.....	Mrs. Bell
Dogue De Bordeaux.....	Ms. Jenkins
German Pinschers.....	Mrs. Bell
Giant Schnauzers.....	Ms. Cardona*
Great Danes.....	Mr. Stebbins
Open, Black; Blue; Brindle; Fawn; Harlequin; Mantle; Merle. Same division of classes in bitches.	
Great Pyrenees.....	Ms. Jenkins
Greater Swiss Mountain Dogs.....	Mrs. Bell
Komondorok.....	Mrs. Bell
Kuvaszok.....	Mrs. Bell
Leonberger.....	Mr. Stebbins
Mastiffs.....	Ms. Jenkins
Neapolitan Mastiffs.....	Ms. Jenkins
Newfoundlands.....	Mr. Stebbins
Portuguese Water Dogs.....	Mrs. Bell

Rottweilers.....	Mr. Stebbins
S T. Bernards.....	Ms. Jenkins
Samoyeds.....	Mrs. Bell
Siberian Huskies.....	Ms. Jenkins
Standard Schnauzers.....	Mr. Stebbins
Tibetan Mastiffs.....	Mr. Stebbins

MISCELLANEOUS CLASS

Mrs. Catherine Bell

There will be a puppy, bred by and open class for dogs and bitches in each breed: Czechoslovakian Vlcak, Kai Ken, Pyrenean Mastiff, Yakutian Laika.

JUNIOR SHOWMANSHIP COMPETITION

Ms. Kimberly Cardona

OBEDIENCE

Beginner Novice A.....	Ms. Meade
Beginner Novice B.....	Ms. Meade
Novice Class A.....	Ms. Meade
Novice Class B.....	Ms. Meade
Novice, Graduate.....	Ms. Meade
Novice, Preferred.....	Ms. Meade
Open Class A.....	Ms. Meade
Open Class B.....	Ms. Meade
Open, Graduate.....	Ms. Caballero
Open, Preferred.....	Ms. Meade
Utility Class A.....	Ms. Caballero
Utility Class B.....	Ms. Caballero
Utility, Preferred.....	Ms. Caballero
Versatility Class.....	Ms. Caballero
Rally Novice A.....	Ms. Strong
Rally Novice B.....	Ms. Strong
Rally Intermediate.....	Ms. Strong
Rally Advanced A.....	Ms. Strong
Rally Advanced B.....	Ms. Strong
Rally Excellent A.....	Ms. Strong
Rally Excellent B.....	Ms. Strong
Rally Master.....	Ms. Strong
Rally Choice.....	Ms. Strong

AWARDS OF MERIT To encourage and reward the participation of quality dogs and bitches in the Best of Breed category, Tri-Valley Working Dog Club of Pinon Hills will offer Awards of Merit to enable judges, at their discretion, to recognize and acknowledge deserving exhibits who have not been awarded Best of Breed or Best of Opposite Sex. Rosettes will be offered in those breeds with the following numbers of champions entered in Best of Breed competition:

5-7 champions – one Award of Merit

8-11 champions – two Awards of Merit

12-16 champions – three Awards of Merit

17-22 champions – four Awards of Merit

23 or more champions – five Awards of Merit

Winners Dog and Winners Bitch are also eligible for an Award of Merit.

TROPHIES

Rosettes offered by Tri-Valley Working Dog Club of Pinon Hills:

Best in Show and All Placements in Groups, Brace, Team, Best Junior Handler, High in Trial and High Combined Score, Working only and All Breed Trial Competition

Additional trophies provided by Canine Cancer Warriors.

MEMORIAL TROPHIES

FIRST IN WORKING GROUP

Robert Custer Memorial Trophy, a replica of a Roger Kirby sculpture on a wood base donated by John and Claire O'Neill of BarkBark Samoyeds, in honor of our dear friend and favorite Chief Steward, "Bob" Custer.

FIRST IN WORKING GROUP

Shay Tuttle Memorial Trophy, a lovely bronze statue depicting dogs at work on a wood base, donated by Cheryl Strosser, in honor and memory of our beloved club member and dear friend Shay Tuttle.

Winning dogs and owner(s) are to be engraved on tags and attached to wooden base(s).

FIRST IN WORKING GROUP

Working Group 1 dog show related item

Second through Fourth: dog show related item

First Show Only: Best In Sweepstakes, 1-4 placements dog show related item

Best In Veteran Sweepstakes, 1-4 placements dog show related item

Second Show only: Bred by Group 1-4 placements dog show related item

Best Owner Handler Group 1-4 placements dog show related item

BEST BRED BY EXHIBITOR Group 1 AKC offers a Free Litter Registration

BEST JUNIOR HANDLER:

\$25 Amazon Gift Card sponsored by Tri-Valley Working Dog Club of Pinon Hills.

OBEDIENCE COMPETITION

High in Trial Working Dog, High In Trial All Breeds: \$10 Starbucks giftcards

JUDGES GIFTS

Judges gifts sponsored by Chris Delisi

BREED TROPHIES Best of Breed dog show related item in every breed

The American Bullmastiff Association, Inc. will support the entries at both shows.

The California Bullmastiff Fanciers offers dog items and rosettes for Best of Breed, Best of Opposite Sex and Best of Winners.

Gift Basket Bullmastiff BOB winners show 1 and 2

DOG SHOW TOURS

Tri-Valley Working Dog Club of Pinon Hills is pleased to offer complimentary dog show tours. Please contact Pam Leighton at sierrasaint@sbcglobal.net prior to day of show, or any TVWDC club member on the day of the show for further information. The tours are approximately 30 – 45 minutes in length and designed to both entertain and inform our newer dog show enthusiasts.

FIRST SHOW WILL OFFER SWEEPSTAKES / VETERAN SWEEPSTAKES

Sweepstakes Group Judge: Mr. Stephen Cabral

Veteran Sweepstakes Group Judge: Mr. Stephen Cabral

The Tri-Valley Working Dog Club of Pinion Hills, Inc. Puppy/Young Adult Sweepstakes is open to all owners, breeders and exhibitors of dogs assigned to the Working Group by the American Kennel Club. All entries in puppy sweepstakes must also be entered in a regular class and the entry must be made as an additional entry on the same entry blank with age and/or division specified. The entry fee is **\$20.00**

The puppy/young adult sweepstakes classes will be judged prior to the regular breed classes for each eligible Working Breed. Classes are divided by sex and age and are offered for all eligible Working Breeds between the ages of six months and under eighteen months. Each puppy or young adult receiving the award of "Best of Breed in Sweepstakes" in each respective breed is eligible to compete in the Puppy/Young Adult Working Group Sweepstakes, to be judged immediately prior to Veteran Working Group Sweepstakes and Best in Working Group.

CLASSES (divided by sex):

Puppy Dogs 6 mos. and under 9 mos.

Puppy Bitches 6 mos. and under 9 mos.

Puppy Dogs 9 mos. and under 12 mos.

Puppy Bitches 9 mos. and under 12 mos.

Dogs 12 mos. and under 15 mos.

Bitches 12 mos. and under 15 mos.

Dogs 15 mos. and under 18 mos.

Bitches 15 mos. and under 18 mos.

The Tri-Valley Working Dog Club of Pinion Hills, Inc. Veteran Sweepstakes is open to all owners, breeders and exhibitors of dogs assigned to the Working Group by the American Kennel Club. Entries shown in veteran sweepstakes may or may not be entered in one of the regular classes at this show. Neutered or spayed dogs/bitches may compete in veteran sweepstakes. The entry fee is **\$20.00**

The veteran sweepstakes classes will be judged prior to the regular breed classes for each eligible Working Breed. Classes are divided by sex and age and are offered for all eligible Working Breeds six years of age or older. Each Working Dog receiving the award of "Best of Breed in Veteran Sweepstakes" in each respective breed is eligible to compete in the Working Group Veteran Sweepstakes, to be judged immediately prior to Best in Working Group.

CLASSES (divided by sex)

Veteran Dogs 6 years and under 9 years

Veteran Bitches 6 years and under 9 years

Veteran Dogs 9 years and older

Veteran Bitches 9 years and older

SWEEPSTAKES CLASS MONEY AWARDS 35% of entry fees will be retained by Tri-Valley Working Dog Club of Pinon Hills, Inc. for expenses. All remaining monies collected will be divided as follows: 1st Place – 40%, 2nd Place – 30%, 3rd Place – 20%, 4th Place – 10%.

PUPPY/YOUNG ADULT AND VETERAN SWEEPSTAKES PRIZES Rosettes offered by Tri-Valley Working Dog Club of Pinon Hills for Best in Working Group Sweepstakes and Groups 2 through 4.

Best of Breed in Sweepstakes in each Breed – Pink and Green Rosette

Best of Opposite Sex in Sweepstakes in each Breed – Lavender Rosette

SECOND SHOW WILL OFFER NOHS COMPETITION

Group Judge: Ms. Kimberly Cardona

SECOND SHOW WILL OFFER BRED BY EXHIBITOR COMPETITION

Group Judge: Ms. Wendy Corr

Competition will be for Best Bred-By-Exhibitor in each breed or variety, Best Bred-By-Exhibitor in Group (placements 1 through 4)

RULES

Bred by Exhibitor group competition will be held for dogs entered and competing in the Bred by Exhibitor classes.

The Best of Bred by Exhibitor winner from each breed shall compete in the Bred by Exhibitor group. Judged in the same fashion as the regular group, the winner shall be entitled "the Best Bred by Exhibitor in Show".

There is no additional entry fee for this competition. AKC rules for the Bred by Exhibitor class shall apply for the Bred by Exhibitor Group.

THERE IS NO ADDITIONAL ENTRY FEE FOR THIS COMPETITION. ONLY ENTRIES IN THE REGULAR BRED BY EXHIBITOR CLASSES ARE ELIGIBLE FOR THE BEST BRED-BY-EXHIBITOR COMPETITION.

PRIZES AND RIBBONS: Flat ribbon for Best Bred-By-Exhibitor in each breed or variety, rosette for group placements.

FRIDAY, SATURDAY, SUNDAY & MONDAY - National Owner Handled Series

The AKC National Owner-Handled Series is a non-titling competition for dogs that are exhibited by their owners that are not professional handlers. All dogs that are owner-handled and are not owned or exhibited by professional handlers* meet the requirements for this competition. Exhibitors must declare their dog is Owner-Handled eligible at the time of entry using the check box on the entry form. Eligible dogs will be identified by an asterisk in the judge's book, steward's book & the catalog. Dogs must be handled throughout the breed level competition for the regular show by an eligible owner. Professional handlers, household members and current assistants** to professional handlers may not exhibit the dog in any competition during the entire show.

Owner-Handled Best of Breed will be selected from the dogs that are eligible to compete in the Best of Breed competition including Winners Dog, Winners Bitch and winners of the non-regular classes. o If the Best of Breed/Variety winner is Owner-Handled competition eligible, it will automatically be Owner Handled Best of Breed/Variety and be eligible to compete in both the regular as well as the Owner Handled group. o If the Best of Breed/Variety winner is not eligible for Owner-Handled competition and the Best of Opposite Sex to Best of Breed/Variety is eligible, the Best of Opposite Sex to Best of Breed/Variety will compete against the eligible exhibits of the other sex to determine Owner-Handled Best of Breed/Variety. o If neither the Best of Breed nor the Best of Opposite Sex to Best of Breed/Variety are Owner-Handled competition eligible and Select Dog & Select Bitch are both eligible, the judge is to choose Best Owner Handled exhibit from the Selects and eligible Winners Dog or Winners Bitch. o If one of the Selects is eligible, excuse all Champions and non-regular class winners of the same sex and then choose Best Owner-Handled exhibit from the remaining dogs of the opposite sex including the eligible Winners. o If Best of Breed, Best of Opposite Sex to Best of Breed, Select Dog & Select Bitch are not eligible, the judge may choose any eligible dog remaining in the ring including Winners Dog or Winners Bitch as Owner Handled Best of Breed/Variety. o If the Best of Winners is eligible, the other Winner is ineligible since it was defeated. o No class dogs other than the Winners Dog & Winners Bitch are eligible to return to the ring.

The breed will not be represented in the Owner-Handled Group if there is no eligible dog competing in the Best of Breed or in Best of Winners competition.

*Professional handlers are defined as any person who belongs or has belonged to a professional handlers' organization, distributed rate cards, or otherwise advertised or represented themselves as handling dogs for pay within the last five years

**A current assistant is defined as anyone employed by a professional handler on a full-time basis, or assisting a professional handler at the show or any during the cluster/weekend.

A ribbon will be awarded to each Best Owner Handled In Breed or Variety.

The seven Best Owner Handled In Group winners will compete in the Best Owner Handled In Show. Owner Handled Group order will be listed in the judging program.

OWNER-HANDLED BEST IN SHOW AND GROUP JUDGES

	FRIDAY	SATURDAY	SUNDAY	MONDAY
Sporting.....	Mrs. McClary	Mr. Smyth	Mr. Leonard	Ms. Gonzalez
Hound.....	Mr. Cabral	Mr. Leonard	Mr. Miranda	Mrs. Seiler-Cushman
Working.....	Mr. Smyth	Mrs. Seiler-Cushman	Mrs. Bell	Ms. Corr
Terrier.....	Mrs. McClary	Mr. Leonard	Ms. Bruce	Mrs. Dykstra-Blum
Toy.....	Mr. Leonard	Miss Lex	Mrs. Pickett	Mr. Pfeil
NonSporting....	Mr. Cabral	Mr. Brantley	Mrs. Pickett	Ms. Corr
Herding.....	Mr. Leonard	Ms. Bruce	Ms. Gonzalez	Mrs. McClary
BISOH.....	Mrs. Bell	Mrs. Pickett	Mrs. McClary	Mr. Leonard

The American Kennel Club

Presents:

“Judging Junior Showmanship”

Held in conjunction with the South Bay Kennel Club Shows

May 23, 2026

San Juan Capistrano, CA

\$50.00

Please review the Junior Showmanship Rulebook prior to attending the seminar. [Http://images.akc.org/pdf/rulebooks/REJRSH.pdf](http://images.akc.org/pdf/rulebooks/REJRSH.pdf)

**Please meet at the Superintendent's office 30 minutes prior to the start of Junior Showmanship Judging*

*To Register complete and return to: American Kennel Club ♦ Judging Operations Department ♦ PO Box 900062 ♦ Raleigh, NC 27675-9062
♦ 919-816-3862 ♦ fax# 919-816-4225*

Name: _____

Address: _____

Phone: _____ Judges # _____

Have you already submitted an application for your first breed or JS? _____

Email: _____

**Please remit payment by check or money order payable to “AKC”.
Cash cannot be accepted.**

**Contact [judged@akc.org](mailto:judgeted@akc.org) or 919-816-3862 with any questions
concerning payment options.**

The AKC retains all rights to photograph or videotape by any means, televise or reproduce these events in any way, now and in the future. Photos of this event may be used, but are not limited to, future educational literature, training purposes, newsletters, or advertisements.

NO REFUNDS ONE MONTH PRIOR TO THE DATE OF THE SEMINAR

***Time subject to change based upon final judging schedule.**

Seminar to be conducted in-conjunction with Junior Showmanship Judging



The American Kennel Club's Registered Handlers Program
and the
San Gabriel Valley Kennel Club are pleased to present:

**“Road Preparedness—Basic Vehicle and
Dog-transport Needs”**

Presented by AKC RHP Member, Shane Hooper

San Juan Capistrano, CA
Friday, May 22, 2026
To be held immediately after BIS

Cost: FREE of CHARGE

The seminar will discuss how to prepare handlers, with a basic understanding of vehicle needs and problems on the road, how to deal with on-the-road vehicle emergencies, and basic transportation must-have for dogs.

Attending this seminar will fulfill the AKC RHP ongoing education requirement for 2026 for all RHP members.

Bring a chair and join us for an educational event, compliments of the American Kennel Club's Registered Handlers Program!

OPEN TO ALL!

JUNIOR SHOWMANSHIP COMPETITION

Novice Junior Class: For Boys and Girls who are at least 9 years old and under 12 years old on the day of the show and who, at the time entries close, have not won three First Place awards with competition present in a Novice Class at a licensed or member show.

Novice Intermediate Class: For Boys and Girls who are at least 12 years old and under 15 years old on the day of the show and who, at the time entries close, have not won three First Place awards with competition present in a Novice Class at a licensed or member show.

Novice Senior Class: For Boys and Girls who are at least 15 years old and under 18 years old on the day of the show and who, at the time entries close, have not won three First Place awards with competition present in a Novice Class at a licensed or member show.

Open Junior Class: For Boys and Girls who are at least 9 years old and under 12 years old on the day of the show and who, at the time entries close, have won three First Place awards with competition present in a Novice Class at a licensed or member show.

Open Intermediate Class: For Boys and Girls who are at least 12 years old and under 15 years old on the day of the show and who, at the time entries close, have won three First Place awards with competition present in a Novice Class at a licensed or member show.

Open Senior Class: For Boys and Girls who are at least 15 years old and under 18 years old on the day of the show and who, at the time entries close, have won three First Place awards with competition present in a Novice Class at a licensed or member show.

Master Class: This class will be for boys and girls who are at least 9 years old and under 18 years on the day of the show, and who have won 10 Best Junior wins with competition. The calendar for this class will be consistent with the eligibility dates for the AKC National Championship. All Juniors Meeting the criteria for this class are required to enter the Master Class and may change their entry the day of the show if entries have already closed. Once the eligibility time frame for that year has passed all participants return to the Open Class to compete for the following year.

Junior Handlers who win a third Novice Class with competition present after the closing of entries for a show may transfer their entry from the Novice Class to the Open Class provided that this transfer is made by the Superintendent at least one half-hour prior to the scheduled start of any regular conformation judging or one half-hour prior to the scheduled start of Junior Showmanship judging at the show, whichever is earlier.

Winning of first place in an Open Class at this show may qualify or count toward qualification for entry in certain future limited Junior Showmanship Classes. For information on eligibility requirements for limited Junior Showmanship Classes which have been approved to date by AKC, go online at www.akc.org.

Junior Handler's must include their AKC Junior Handler identification number on the entry blank.

You may obtain your number by calling the AKC Event Records Department (919) 233-9767.

Notice: Be sure all information for Junior Showmanship Classes is entered on the front and back of the entry form.

HOTELS

These motels will take well-behaved dogs. Owners must assume responsibility. Dogs must not be left unattended in motel rooms.

The hotel restrictions are current as of this printing. Please check with directly hotel regarding their particular dog policies, cleaning fees, and restrictions.

VOCO LAGUNA HILLS

25205 La Paz Rd, Laguna Hills, CA 92653
949-586-5000

<https://www.ihg.com/redirect?path=asearch&brandCode=vx&localeCode=en®ionCode=1&hotelCode=SNALH&checkInDate=20&checkInMonthYear=042026&checkOutDate=25&checkOutMonthYear=042026&rateCode=6CBAR C& PMID=99801505&GPC=DO5&cn=no&adjustMonth=false&showApp=true&monthIndex=00>



Group Code: DO5

Rate: \$169 + 10.7% occupancy tax per room/night

Booking Cut-Off Date: Tuesday, APRIL 21, 2026

Individual Room Cancellation: 72-hour prior arrival

Special Concessions: No Resort Fee, Complimentary breakfast for up to 2 guests per room, Discounted pet fee at \$150 one time fee per pet, Waiving Parking Fee

BEST WESTERN CAPISTRANO INN

27174 Ortega Hwy, San Juan Capistrano, CA 92675

800-780-7234 to request to make a reservation under the group block for Mission Circuit Cluster Dog

Show or use the booking link: <https://bit.ly/4qJNpjQ>

Rooms and rates are available until 4/22/26 or until the block is filled.

RESIDENCE INN BY MARRIOTT DANA POINT

33711 Camino Capistrano, San Juan Capistrano, CA 92675

949-443-3600

\$209.00 USD per night - Last Day to Book : Monday, April 20, 2026

Start Date: Wednesday, May 20, 2026 - End Date: Sunday, May 24, 2026

Click link below:

[Book your group rate for Mission Circuit Dog Show](#)

BOOTH SPACE

The Mission Circuit welcomes vendors to our shows. Invitations will be sent out to those who have been with us before. If you wish to be sent an invitation or desire more information, please contact the Vendor Chairmen listed below. No booth space will be rented the day of the show. In addition, no one will be provided booth space unless the Vendor Chairmen have received payment for space.

Make checks payable to Mission Circuit Cluster and mail to:

Dorinne Waterman, 14100 Oakdale Dr., Lake Matthews, Perris CA, 92570
(951) 420-2887 Email - dorinne25@gmail.com

CATALOG ADVERTISING

Make checks payable to SGVKC and mail to:

Dorinne Waterman
14100 Oakdale Dr., Lake Matthews, Perris CA, 92570
(951) 420-2887 Email - dorinne25@gmail.com
Deadline is May 1, 2026 Full Page \$75.00 with 1 photo

PUBLICATION RIGHTS By entering this show, all owners, handlers, breeders and kennels agree that all rights to televise, videotape, photograph, advertise, promote and publicize or otherwise exploit this show, or the persons or animals participating in it or the results of the competition before, during or after the event, shall belong solely to The American Kennel Club and their respective assigns, including the use of the names, likenesses or biographical matter of all dogs, owners, handlers, breeders and kennels participating in the show and no such owner, handler, breeder or kennel shall allow any other party to make commercial use of any videotape or photograph of any person or animal participating in this competition. 11/21/18

DIRECTIONS TO SHOW

Rancho Mission Viejo Riding Park
30753 Avenida La Pata, Mission Viejo, CA 92675

From North:

Interstate 5 South. Take CA-74 E/Ortega Hwy. in San Juan Capistrano.
Turn right on Avenida La Pata. Turn right into parking.

From East:

15 Fwy Exit CA-74 W/Ortega Hwy in San Juan Capistrano. Turn left on
Avenida La Pata. Turn right into parking.

PARKING

DAY OF SHOW PARKING (THURSDAY TO MONDAY)

Parking is payable upon arrival. Do not mail ahead of time. Gates open 6:00 AM. Parking is \$10.00, motor homes will cost more.

RESERVED OVERNIGHT PARKING HOURS

Wednesday 4 pm-10 pm

Thursday 6 am – 7 am & 2 pm – 10 pm

Friday & Saturday & Sunday 6 am – 7 am & After Best in Show – 10 pm

Monday 6 am – 7 am

POWER

The power will be turned on at 5 pm on Wednesday and turned off on Monday at 5 pm. Any damage caused to any power that is supplied by the location equipment, is the sole responsibility of the person whose vehicle caused that damage while plugged into that power. These damages must be paid for at the time of the damage.

1. All parking will be on paved surface.
2. Each parking space is for one vehicle only. (Trailer and tow vehicle are considered as one vehicle.) You may purchase a Tag Vehicle permit for \$10.00 per night. All vehicles MUST be parked inside the lines of your assigned space.
3. If you wish to park together you must send your reservation forms in one envelope. No separate requests. You must arrive together.
4. Your area must be left clean when leaving grounds. No washing of mats or dog equipment.
5. Any vehicles parked illegally (aisles, fire lanes, no parking areas) will be towed at the owner's expense.
6. Any arguing or abusive language to members of the parking crew and you will forfeit all parking privileges for the rest of the circuit. There will be no refunds, and the matter will be referred to the Bench Show Committee.
7. No electrical cords can run across any roadways or fire lanes.
8. If your check is returned and not cleared up within a three-month period, you may be denied future entries and parking. \$25.00 returned check fee
9. Reservations close when entries close. No refunds after the closing date. Do not send mail that needs a signature. **Make check payable to Mission Circuit Cluster.** E-mail confirmations will be sent if a legible e-mail is provided.
10. All parking on streets adjacent to the show wite will be subject to local regulations and restrictions.
11. Dogs/crates are allowed under main tents only during judging for that breed. No Exceptions. Unattended dogs/crates will be removed by club. One crate per dog will be permitted in the aisle and it must be removed immediately after each dog is excused from further judging. No crates are to be left overnight.
12. No smoking under tents.
13. No flexi-leads allowed on show grounds during show hours.
14. RVs and trailers must exhaust vertically.

RV / Box Truck parking fees \$100 per night with power

MAIL TO: Ron Mattson, 461 DENA DRIVE, NEWBURY PARK, CA 91320

PARKING RESERVATION FORM

Name: _____ Phone _____

Email _____ (a confirmation will be sent, if legible)

Type of vehicle _____ Total Length _____ Tag Car @ \$10.00 per day _____

CHECK WHICH NIGHTS BELOW (3 day minimum)

Wed _____ Thurs _____ Fri _____ Sat _____ Sun _____

I agree to follow the above rules.

Signature _____ Date _____

CONFORMATION RIBBON PRIZES

The following ribbon prizes will be awarded:

First Prize - **Blue Ribbon**

Third Prize - **Yellow Ribbon**

Second Prize - **Red Ribbon**

Fourth Prize - **White Ribbon**

Winners - **Purple Ribbon**

Reserve Winners - **Purple and White Ribbon**

Best of Winners - **Blue and White Ribbon**

Best of Breed & Best of Variety of Breed - **Purple and Gold Ribbon**

Best of Opposite Sex to Best of Breed or Variety of Breed - **Red and White Ribbon**

Select – **Light Blue and White Ribbon**

Best in Show - **Red, White and Blue Rosette**

Reserve Best In Show – **Red, White and Yellow Rosette**, unless otherwise chosen

Best Junior Handler – **Pink and Green Rosette**

Reserve Best Junior Handler – **Pink and Gray Rosette**

And the following ribbon prizes for all non-regular classes:

First Prize - **Rose Ribbon**

Third Prize - **Light Green Ribbon**

Second Prize - **Brown Ribbon**

Fourth Prize - **Gray Ribbon**

OBEDIENCE AND RALLY TRIAL RIBBON PRIZES

First Prize - **Blue Ribbon**

Third Prize - **Yellow Ribbon**

Second Prize - **Red Ribbon**

Fourth Prize - **White Ribbon**

Qualifying Score – **Green Ribbon**

Highest Combined Score - **Blue and Green Rosette**

High In Trial - **Blue and Gold Rosette**

High Combined Triple Qualifying - **Blue and Red Rosette**

ROSETTES FOR SPECIALTIES

For clubs who are holding a specialty on Thursday and supporting the entry on the circuit the Mission Circuit clubs offer rosettes for Best of Breed, Best of Winners and Best of Opposite Sex.

For clubs who are holding a designated specialty any day on the circuit, the Mission Circuit clubs offer rosettes for Best of Breed, Best of Winners and Best of Opposite Sex for that day only.

Best In Sweepstakes and Best of Opposite Sex In Sweepstakes any day on the circuit the Mission Circuit clubs offer rosettes.

RAMP – The following breeds must be examined on a ramp through all levels of conformation competition: Lagotto Romagnolo, Clumber Spaniel, English Springer Spaniel, Sussex Spaniel, Basset Hound, Cirneco dell'Etna, Kerry Blue Terrier, Bulldog, Chinese Shar-Pei, Chow Chow, Keeshond, Spanish Water Dog.

At the discretion of the judge, the following breeds may be examined on a ramp through all levels of competition: Nova Scotia Duck Tolling Retriever, American Water Spaniel, Boykin Spaniels, Field Spaniel, Welsh Springer Spaniel, Basenji, Grand Basset Griffon Vendéen, Norwegian Elkhound, Whippet, German Pinscher, Portuguese Water Dog, Standard Schnauzer, American Staffordshire Terrier, Irish Terrier, Soft Coated Wheaten Terrier, Staffordshire Bull Terrier, Finnish Spitz, Australian Cattle Dogs, Entlebucher Mountain Dog, Finnish Lapphund, Icelandic Sheepdog, Mudi, Norwegian Buhund, Polish Lowland Sheepdog, Puli, Norrbottenspet.

The following breeds may be examined on the ground, table or ramp: Miniature Bull Terrier.

Junior showmanship judges should follow the above.

Ramps may be used in emergency situations to examine any breed. (In all but emergency situations, the exhibitor has no recourse. In an emergency situation, where use of a ramp is not indicated in the premium list, an exhibitor has the option of withdrawing their entry and receiving a refund.) 1/1/26

ADDITIONAL RULES

1. Entries must reach the Superintendent, Jack Bradshaw, 320 Maple Avenue, Torrance, CA 90503 by Noon Wednesday May 6, 2026 PT. Fees should accompany entries. This club and/or its superintendent assumes no responsibility for wrong or incomplete information given on the entry blank by the owner or agent of the owner. This club and its superintendents assume no responsibility for the owner or owner's agents entering a dog in a class in which the dog is not eligible to compete, or for entering the same dog twice.
2. Returned Checks do not constitute a valid entry fee. The Superintendent will add a collection fee to the amount of each returned check and declined credit card. Subsequent returned checks for the same exhibitors may result in their being put on a CASH ONLY basis. The returned check or declined credit card MUST BE MADE GOOD by cash or money order BEFORE the dog will be allowed in the ring.
3. Exhibitors' confirmations and judging programs will be emailed to the email address on the entry blank. If not received within a reasonable time prior to the show, notify the superintendent.
4. During the hours of judging owners are to be on call, and have their dogs ready to bring into the judging ring promptly, In order that the judging will not be delayed. Dogs need only be present for their judging. Dogs not needed for further judging may be excused. It is the responsibility of the exhibitor to have his dog ready to be shown and at the entrance of the judging ring when the steward calls for the class. Owners of dogs or the handlers of the dogs alone are responsible for the presence of their dogs in the judging rings. This means it is not the responsibility of the ring steward, nor of any agent of the show-giving club to locate any dog, its owner or handler, when the dog's presence is needed in a judging ring. It should be understood by every exhibitor and handler that waiting for dogs to be brought into the ring is a courtesy extended to the owner or handler of the dog. There is no rule of this club nor of The American Kennel Club that requires a judge to wait for an owner or handler to bring his dog into the ring. Show hours 7 a.m. to 8:00 p.m.
5. Trophies and prizes will be awarded in the judging ring before the completion of the judging of the breed and the superintendent's office advised at once, in the event of any discrepancy. All trophies must be claimed the day of the show. None will be mailed.
6. Exhibitors are admonished to make themselves familiar with the agreement of the American Kennel Club, referred to on the reverse side of the entry blanks that accompany this premium list. Rule books are available online at akc.org.
7. The club, its superintendents or their employees will not be responsible for the loss of or damage to any dog exhibited, whether the result of accident or other causes and in addition assumes no responsibility for any loss, damage or injury sustained by an exhibitor or handler. It is distinctly understood that every dog at this show is in the care and custody and control of his owner or handler during the entire time the dog is on the show premises.
8. No grooming tables, pens or exhibitors setups will be allowed in the aisles and all grooming must be done away from the judging ring in areas specified by the club.
9. Entry fees shall NOT be refunded in the event that a dog is absent, disqualified, sick, lame, excused by veterinarian or judge, barred from competition by action of the Bench Show Committee, or because the dog is ineligible to compete due to being entered incorrectly. There is no refund of entry fee for duplicate entry. There will be a \$5.00 fee charged for cancellation of entry prior to closing of entries.
10. There is no provision offered for unentered dogs at this show.
11. Declination of Entries. The Antelope Valley Kennel Club, South Bay Kennel Club, San Gabriel Valley Kennel Club and Los Encinos Kennel Club and may decline any entries for cause and may refuse to receive or may remove any dog on account of disease, viciousness or other causes, and no one shall have any claim or recourse against the club(s) or any official thereof.
12. If, because of riots, civil disturbances or other acts beyond the control of the management, it is impossible to open or complete the show, no refund of entry will be made.
13. Do not leave any dogs in closed vehicles.
14. Dogs which according to their owners' records have completed the requirements for a championship after the closing of entries for the show but whose championships are unconfirmed, may be transferred from one of the regular classes to the Best of Breed or Variety Competition, provided this transfer is made by the Superintendent at least one half hour prior to the start of the earliest Conformation judging at the Show.
15. Junior Handlers who win a third Novice Class after the Closing of entries for a show may transfer their entry from the Novice Class to the Open Class provided that this transfer is made by the Superintendent at least one half-hour prior to the scheduled start of the earliest conformation judging or one half-hour prior to the scheduled start of judging at the Show, whichever is earlier.
16. Dogs which according to their owners' records have earned an obedience title after the closing of entries for the show may be moved up to the next class, provided this transfer is made in writing and presented to the superintendent at least 30 minutes prior to the start of each trial.
17. No practicing is allowed in rings at any time.
18. Parents and/or Guardians are responsible for the actions of their children.
19. Bitches in season are ineligible to compete in trials. To receive a refund, a veterinarian's letter needs to be received by the Superintendent no later than one half hour prior to the start of the first class in the trial. There will be a \$4.00 fee charged for bitch in season cancellations.
20. The AKC is committed to creating a safe and respectful sport environment for all. If you need to talk to someone, or need help, please call 800.656.HOPE (National Sexual Assault Hotline) or text HOME to 741-741 for free, 24/7, confidential services from trained crisis counselors.

GROOMING & AREAS - Reserved Grooming Area

Online reservations Only at WheresMySpace.com

All reserved grooming will be outside and/or handlers are responsible for their dogs

Reserved grooming setup will start Wednesday after 4pm to 8pm, Thursday to Monday 6 am to 10 pm; however, "your" space will be reserved for your arrival on any day of the cluster. Dogs are not allowed overnight.

Day Crating/Grooming Areas:

THE SHOW COMMITTEE WILL MARK DAY CRATING/GROOMING SPACES. ALL ITEMS MUST BE REMOVED FROM THE DAY CRATING/GROOMING AREAS BY THE END OF THE SHOW DAY. NO OVERNIGHT SET UP/GROOMING SPACES ARE PERMITTED IN THE DAY CRATING/GROOMING AREA. The Show Committee reserves the right to consolidate or move spaces to accommodate exhibitors. NO MATS ALLOWED ON THE GROUND OR SAVING OF SPACES. ALL TAPED OFF AREAS WILL BE REMOVED.

USE OF DRYERS, ELECTRICAL HOOKUP, BATHING OF DOGS OR OVERNIGHT SETUP IS STRICTLY PROHIBITED IN THE DAY CRATING AREAS.

AISLES MUST BE KEPT CLEAR. The Show Committee will designate holding areas near the rings for exhibitors to put crates and tables and Dollies while they are showing. Only approved grooming space may be used for grooming. Day Crating/Grooming area reserved grooming setup will start Thursday to Monday 6 am to 10 pm

NON RESERVED GROOMING AREA - Although reservations are recommended, free grooming areas, without power are available in designated areas. Please bring your own shade for outside. Spaces are limited - arrive early. The Show Committee reserves the right to consolidate or move spaces to accommodate exhibitors.

VIOLATORS TO THE ABOVE POLICIES ARE SUBJECT TO DISCIPLINARY ACTION UP TO AND INCLUDING A BENCH SHOW HEARING.

Reservations must be received no later than Close of Entries, May 6, 2026. Late fee of \$10 per 10x10 will be added for reservations received after May 6, 2026. Fees will not be refunded and reservations cannot be changed after close of show entries May 6, 2026.

Grounds will open Wednesday after 4pm to 8pm, Thursday to Monday 6 am to 10 pm

ALL RESERVED GROOMING SPACES ARE UNDER CLUB PROVIDED TENTS

Each 10' x 10' spot with Electrical = \$100 for the weekend.

Pick your own space Online at WheresMySpace.com

MISSION CIRCUIT GROOMING

Online reservations ONLY at WheresMySpace.com

Walt Freshour 949-636-4030 cell/text or Reservation@WheresMySpace.com

Health Clinic offered at Mission Circuit

OFA and Other Services Prepaid Health Clinic
(These are NOT DIAGNOSTIC tests but Breed specific for OFA per Parent Club recommendations for individual Breeds)

Join us for OFA and Other Services Testing by Appointments and Prepaid Only
Saturday, May 23, 2026 for Dr. Janet E. Moston, DVM 760-739-1092
Sunday, May 24, 2026 for Dr. Reid Nakamura

Janet Moston, DVM Please fill out the attached Form
OFA Patellars \$30 Please fill out Form online www.ofa.org
OFA Dentition \$ 30
OFA Thyroid Expanded Panel \$165 Please fill out the attached Form for Thyroid
Vaccines \$35 and Titers DA2P \$85; Rabies \$25; Rattlesnake \$45;
Heartworm Antigen Test \$60; Brucella Screen \$65

Cardiac Exams by Appointments and Prepaid Only Sunday, May 24, 2026
Reid Nakamura, DVM Auscultation Cardiac \$50 Echo \$300 (up to 80#)

Owner information

NAME _____

CELL NUMBER _____

Dog's Information

CALL NAME _____ **Birthdate:** _____

BREED _____ **Sex:** _____ **Weight** _____

Medical Problem _____

Allergies _____

Current Medication _____

Microcip _____ **Brand** _____

Vaccinations Rabies _____ **DHLP+Parvo** _____ **Corona** _____

Rattlesnake _____ **Bordetella: Injectable** _____ **Oral** _____

TEST _____

TIME _____

Owner Signature _____

Please email the above information to dorinne25@gmail.com.
We will schedule your appointment with the amount to be paid in cash, check to Mission Circuit Cluster, or Zelle. Contact Dorinne Waterman (951) 420-2887 if any questions.

Health Clinic offered at Mission Circuit

Page 2 of : Janet E Moston, DVM, Animal Fertility and General Practice

Thyroid Info Sheet:

-Dog's Call Name: _____

-Has dog fasted this AM? Yes: _____ No: _____ If no, time of last meal: _____

-Date of last vaccine: _____ Which vaccine given: _____

-Date of last season if a bitch: _____

-Any illness? _____

What: _____

When: _____

-On any medications? Yes: _____ No: _____ (includes Heartworm or Flea)

Which ones: _____

When last given: _____

-Has this canine been on any thyroid medications in the last 3 months? Yes: _____ No: _____

What Medication: _____

When taken: _____

-Current weight: _____

Owner's Name: _____

Date: _____

Breed: _____ **Color:** _____

Health Clinic offered at Mission Circuit

CANINE EYE CLINIC
SPONSORED BY:

Dr. M. Brinkman, Certified Ophthalmologist will be in attendance

DATES: Saturday and Sunday

Hours: To be Announced

FEE: \$70.00 PER DOG

To pre-register please contact: Dorinne Waterman

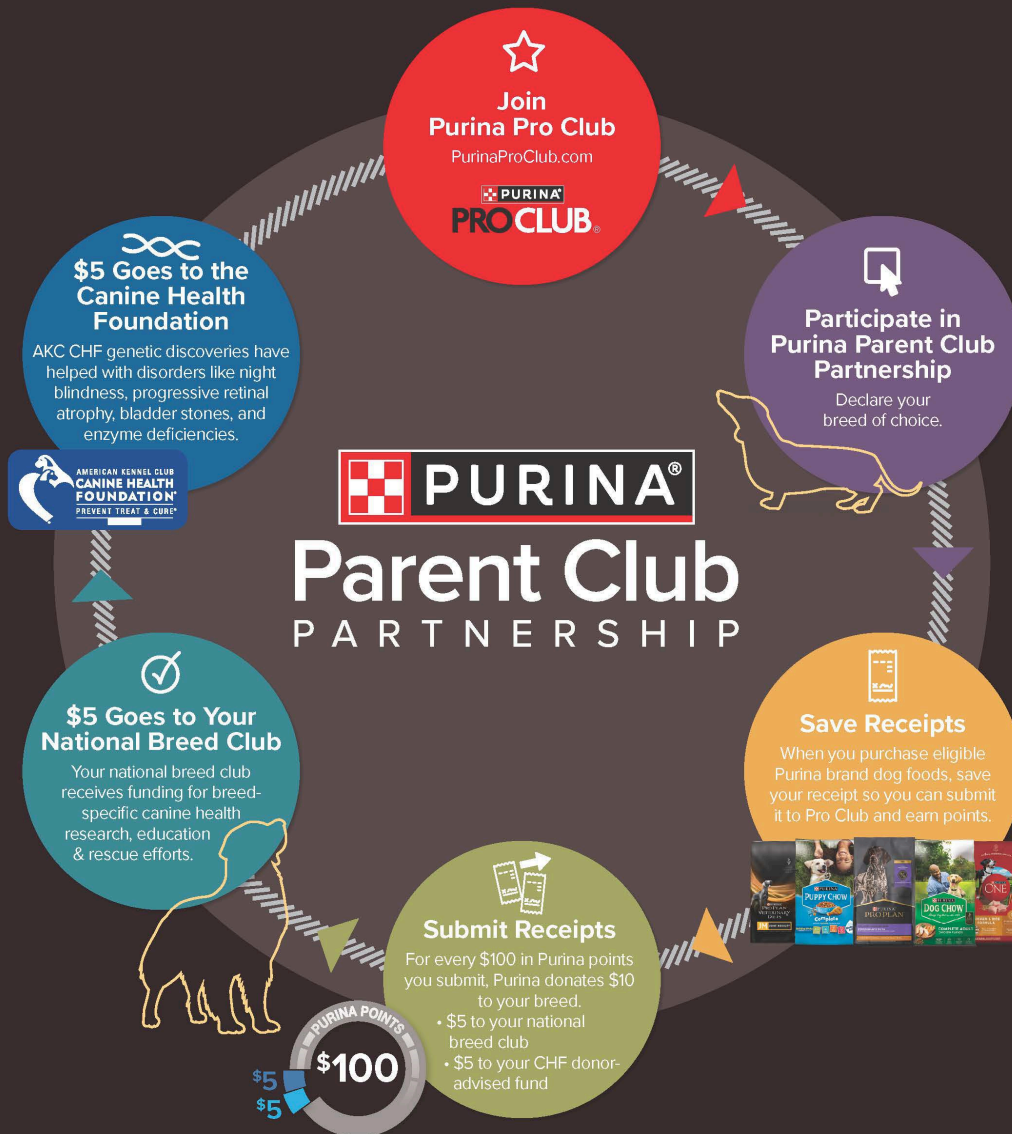
(951) 420 2887 Email - dorinne25@gmail.com

WALK-INS WELCOME

Feed *your* breed.

Feeding Purina® supports the future of your breed.

Since 2002, the Purina Parent Club Partnership program has raised more than \$8 million to support canine health research, education and rescue efforts. Below is how it all works and how you can get involved.



Learn more at purinaproclub.com/ppcp

Purina trademarks are owned by Société des Produits Nestlé S.A. Any other marks are property of their respective owners.

PURINA Your Pet, Our Passion.®

Premium List
AKC All-Breed FAST COURSING
ABILITY TEST
May 21, 2026



Thursday, May 21, 2026- Events #2026063704 and #2026063705

Fun Runs: Friday, May 22 through Monday, May 25

PRE-ENTRIES OPEN WEDNESDAY, APRIL 20th 6PM PST

CLOSE WEDNESDAY, MAY 6 AT 2PM PST

ENTRY IS VIA ONLINE ENTRY FORM ONLY

PLEASE VISIT [PAWSITIVEPERFORMANCEDOGSPORTS.COM](https://pawsitiveperformancedogsports.com)

ENTRY FEES

Pre-Entry Online: \$30.00

Day of Show Entry: \$35

Fun Run Day of Show: \$12

Photographer: Brianna Montague with KD Kennel Creation



Ribbons and Prizes

A light blue flat ribbon will be awarded to each dog with a qualifying run.
Fun Run entry will include raffle ticket for daily prize and grand prize Monday.

Open to all dogs at least 1 year of age by the day of the test that are individually registered with the American Kennel Club, recorded in the FSS program, dogs with PAL numbers, and dogs enrolled in AKC Canine Partners Program.

4 and under 6 Month Beginner Puppy San Gabriel VKC \$20

Friday May 22, 2026 (All breeds are welcome) – Judge Mr. Michael Leonard

South Bay Kennel Club \$20

Saturday May 23, 2026 (All breeds are welcome) – Judge Mr. Stephen Cabral

Southern California Beagle Club \$10

Thursday May 21, 2026 (Must be a Beagle to enter this event)

Southern California Bouvier des Flandres Club \$10

Thursday May 21, 2026 (Must be a Bouvier to enter this event)

Regulations Section 1- Classifications

The Four-to-Six Month Puppy competition shall be for dogs that are four months of age and over but under six months on the day of the event. Classes will be offered for breeds and varieties and divided into Groups as described in Chapter 3, Section 1 of the *Rules Applying to Dog Shows* and the Miscellaneous Class breeds as listed in Chapter 3, Section 23. The Miscellaneous class competition will be the equivalent of Group competition and the winner will be eligible to compete in Best Four-to-Six Month Puppy in Show. The FSS competition will be the equivalent of Group competition and the winner will be eligible to compete in Best Four-to-Six Month Puppy in Show.

Section 2 – Entry and Eligibility

Entry and eligibility requirements include:

- The Four-to-Six Month Puppy event may be offered at licensed or member dog shows at the option of the show giving club.
- Four-to-Six Month Puppy Competition must be listed in the premium list, entry form and judging schedule, if offered.
- Closing date and time for this competition may be listed as any date and time prior to the event including the same day as the event and must be listed in the premium list, entry form and judging schedule.
- AKC registration number or an AKC litter number will be required for entries of an AKC recognized breed as listed in Chapter 3, Section 1 of the *Rules Applying to Dog Shows*.
- A foreign born dog may enter this class if they are registered in the country of origin.
- FSS number or FSS registered litter number will be required for Miscellaneous and FSS breed entries.
- All entrants are to be vaccinated (including rabies) in accordance with their veterinarian's protocol.
- Dogs that are owned or co-owned by a professional handler may compete in this class, but must be handled by a non-professional handler. *Professional handlers are defined as any person who belongs or has belonged to a professional handlers' organization, distributed rate cards, or otherwise advertised or represented themselves as handling dogs for pay within the last five years. Dogs may not be exhibited by current assistants and household members of a professional handler.*

Exhibition Only in the 4-6 Month Beginner Puppy (BPUP) Competition The regulations for the 4-6 Month Beginner Puppy (BPUP) competition have been modified to allow professional handlers to exhibit dogs they own for exhibition only. Dogs must be marked as exhibition only on their entry form and are subject to the entry fees and eligibility requirements of the class. The exhibition only status of an entry may not be changed after the closing of entries. Exhibition only entries will be judged (examined and gaited) as all other entries but will not be considered for awards. Exhibition only entries will not be included in the calculation of Certificate of Merit (CM) and Puppy of Achievement (POA) points. Exhibition only entries in BPUP is available for events occurring on or after July 31, 2024.

Ribbons for Groups and Best Four to Six Puppy in Show will be as follows:

Best of Breed – Orange; Best of Opposite Sex – Lavender;

Best 4-6 Month Puppy in Show – Pink & Green

AMERICAN KENNEL CLUB ENTRY FORM

4 and under 6 Months Beginner Puppy Competition of the

- Thursday, May 21, 2026 Southern California Beagle Club # 1**
- Thursday, May 21, 2026 Southern California Beagle Club # 2**
- Thursday, May 21, 2026 So Calif. Bouvier des Flandres Club**
- Friday, May 22, 2026 San Gabriel Valley KC**
- Saturday, May 23, 2026 South Bay KC**

Rancho Mission Viejo Riding Park, 30753 Avenida La Pata, San Juan Capistrano, CA 92675
 MAIL ENTRIES WITH FEES TO: JACK BRADSHAW., 320 Maple Avenue, Torrance, CA 90503
 MAKE CHECKS payable to JACK BRADSHAW. FAX (323) 727-2949 e-Mail Entries: www.jbradshaw.com
 ENTRIES must be received by the Superintendent not later than **NOON, WEDNESDAY, MAY 6, 2026 PT**
 Thursday Beagles or Bouviers **\$10.00**
 Friday San Gabriel VKC, Saturday South Bay KC **\$20.00**
 ENTRY MUST BE SIGNED at the bottom by the owner or owner's duly authorized agent, otherwise entry cannot be accepted. I enclose \$ _____ for entry fees.

BREED		VARIETY 1	SEX
DOG 2 3 SHOW CLASS		CLASS 3 DIVISION Weight, color, etc.	
ADDITIONAL CLASSES	OBEDIENCE CLASS (Jump Height)	RALLY CLASS (Jump Height)	JR. SHOWMANSHIP CLASS
NAME OF (See Back) JUNIOR HANDLER (if any)			JR. HANDLER NUMBER
FULL NAME OF DOG			
<input type="checkbox"/> AKC® NO. <input type="checkbox"/> PAL NO. <input type="checkbox"/> FOREIGN REG NO & COUNTRY		Enter number here	DATE OF BIRTH
			PLACE OF BIRTH (list country) Do not print the above in the catalog.
BREEDER			
SIRE			
DAM			

ACTUAL OWNER(S) 4 _____ (Please Print)
OWNER'S ADDRESS _____
CITY _____ STATE _____ ZIP _____

I CERTIFY that I am the actual owner of the dog, or that I am the duly authorized agent of the actual owner whose name I have entered above. In consideration of the acceptance of this entry, I (we) agree to abide by the rules and regulations of the American Kennel Club in effect at the time of this event, and by any additional rules and regulations appearing in the premium list for this event, and further agree to be bound by the "Agreement" printed on the reverse side of this entry form. I (we) certify and represent that the dog entered is not a hazard to persons or other dogs. This entry is submitted for acceptance on the foregoing representation and Agreement. I (we) agree to conduct myself (ourselves) in accordance with all such Rules and Regulations (including all provisions applying to discipline) and to abide by any decisions made in accord with them.

Signature of owner or his agent duly authorized to make this entry: _____
 Daytime Telephone _____ Email _____

AKC Rules, Regulations, Policies and Guidelines are available on the American Kennel Club Web site, www.akc.org

AGREEMENT

I (we) agree that the club holding this event has the right to refuse this entry for cause which the club shall deem sufficient. In consideration of the acceptance of this entry and of the holding of this event and of the opportunity to have the dog judged and to win prizes, ribbons, or trophies, I (we) agree to hold the AKC, the event-giving club, their members, directors, governors, officers, agents, superintendents or event secretary and the owner and/or lessor of the premises and any provider of services that are necessary to hold this event and any employees or volunteers of the aforementioned parties, and any AKC approved judge, judging at this event, harmless from any claim for loss or injury which may be alleged to have been caused directly or indirectly to any person or thing by the act of this dog while in or about the event premises or grounds or near any entrance thereto, and I (we) personally assume all responsibility and liability for any such claim; and I (we) further agree to hold the aforementioned parties harmless from any claim for loss, injury or damage to this dog. Additionally, I (we) hereby assume the sole responsibility for and agree to indemnify, defend and save the aforementioned parties harmless from any and all loss and expense (including legal fees) by reason of the liability imposed by law upon any of the aforementioned parties for damage because of bodily injuries, including death at any time resulting therefrom, sustained by any person or persons, including myself (ourselves), or on account of damage to property, arising out of or in consequence of my (our) participation in this event, however such, injuries, death or property damage may be caused, and whether or not the same may have been caused or may be alleged to have been caused by the negligence of the aforementioned parties or any of their employees, agents, or any other persons.

I (WE) AGREE THAT ANY CAUSE OF ACTION, CONTROVERSY OR CLAIM ARISING OUT OF OR RELATED TO THE ENTRY, EXHIBITION OR ATTENDANCE AT THE EVENT BETWEEN THE AKC AND THE EVENT-GIVING CLUB (UNLESS OTHERWISE STATED IN ITS PREMIUM LIST) AND MYSELF (OURSelves) OR AS TO THE CONSTRUCTION, INTERPRETATION AND EFFECT OF THIS AGREEMENT SHALL BE SETTLED BY ARBITRATION PURSUANT TO THE APPLICABLE RULES OF THE AMERICAN ARBITRATION ASSOCIATION. HOWEVER, PRIOR TO ARBITRATION ALL APPLICABLE AKC BYLAWS, RULES, REGULATIONS AND PROCEDURES MUST FIRST BE FOLLOWED AS SET FORTH IN THE AKC CHARTER AND BYLAWS, RULES, REGULATIONS, PUBLISHED POLICIES AND GUIDELINES. 1/1/19

ii



Please visit <https://www.instagram.com/jackbradshawdogshows/> for new information, updates, weather conditions, exhibitor information, etc.



Please like our page at <https://www.facebook.com/JackBradshawDogShows> for new information, updates, weather conditions, exhibitor information, etc.

OFFICIAL AMERICAN KENNEL CLUB ENTRY FORM

<input type="checkbox"/>	Thursday, May 21, 2026 #1	<input type="checkbox"/>	#2 Southern California Beagle Club
<input type="checkbox"/>	Thursday, May 21, 2026 #1	<input type="checkbox"/>	#2 Southern California Ibizan Hound Club
<input type="checkbox"/>	Thursday, May 21, 2026 #1	<input type="checkbox"/>	#2 TriValley Working Dog Club
<input type="checkbox"/>	Thursday, May 21, 2026		Cavalier King Charles Spaniel Club of So Calif
<input type="checkbox"/>	Thursday, May 21, 2026 #1	<input type="checkbox"/>	#2 City of Angels Pomeranian Club
<input type="checkbox"/>	Thursday, May 21, 2026		Southern California Bouvier des Flandres Club
<input type="checkbox"/>	Saturday, May 23, 2026		Dalmatian Club of Southern California

Rancho Mission Viejo Riding Park, 30753 Avenida La Pata, San Juan Capistrano, CA 92675

MAIL ENTRIES WITH FEES TO: JACK BRADSHAW, 320 Maple Avenue, Torrance, CA 90503

MAKE CHECKS payable to JACK BRADSHAW. FAX (323) 727-2949; www.jbradshaw.com;

ENTRIES must be received by the Superintendent not later than **NOON, WED MAY 6, 2026 PT.**

First Entry of a dog at this show **\$39.00**, Each additional entry of the same dog **\$31.00**

Puppy Class 6-9 and 9-12, Bred by Exhibitor Class **\$31.00**, Junior Showmanship **\$20.00**

Thursday: Ibizan swp/vt swp either show, Bouvier swp/vet swp; Beagle #1 show, Working #1 show **\$20.00**

Thursday Pomeranian swps/vt swp either show, Thursday Cavalier swps/vet swps **\$25.00**

Saturday Dalmatian sweepstakes, veteran sweepstakes **\$20.00**

Entry must be signed at the bottom by the owner or owner's duly authorized agent, otherwise entry cannot be accepted.

I enclose \$_____ for entry fees.

BREED		VARIETY 1		SEX
DOG 2 3 SHOW CLASS		CLASS 3 DIVISION Weight, color, etc.		
ADDITIONAL CLASSES	OBEDIENCE CLASS (Jump Height)	RALLY CLASS (Jump Height)	JR. SHOWMANSHIP CLASS	
NAME OF (See Back) JUNIOR HANDLER (if any)			JR. HANDLER NUMBER	
FULL NAME OF DOG				
<input type="checkbox"/> AKC® NO. <input type="checkbox"/> PAL NO. <input type="checkbox"/> FOREIGN REG NO & COUNTRY		Enter number here	DATE OF BIRTH	
			PLACE OF BIRTH (list country) Do not print the above in the catalog.	
BREEDER				
SIRE				
DAM				

ACTUAL OWNER(S) _____ 4 (Please Print)
OWNER'S ADDRESS _____
CITY _____ STATE _____ ZIP _____

I CERTIFY that I am the actual owner of the dog, or that I am the duly authorized agent of the actual owner whose name I have entered above. In consideration of the acceptance of this entry, I (we) agree to abide by the rules and regulations of the American Kennel Club in effect at the time of this event, and by any additional rules and regulations appearing in the premium list for this event, and further agree to be bound by the "Agreement" printed on the reverse side of this entry form. I (we) certify and represent that the dog entered is not a hazard to persons or other dogs. This entry is submitted for acceptance on the foregoing representation and Agreement. I (we) agree to conduct myself (ourselves) in accordance with all such Rules and Regulations (including all provisions applying to discipline) and to abide by any decisions made in accord with them.

Signature of owner or his agent

duly authorized to make this entry: _____

Daytime

Telephone

Email

Owner/Handler Eligible? Yes

No

Emergency Contact _____ Phone _____

AKC Rules, Regulations, Policies and Guidelines are available on the American Kennel Club Web site, www.akc.org

AGREEMENT

I (we) agree that the club holding this event has the right to refuse this entry for cause which the club shall deem sufficient. In consideration of the acceptance of this entry and of the holding of this event and of the opportunity to have the dog judged and to win prizes, ribbons, or trophies, I (we) agree to hold the AKC, the event-giving club, their members, directors, governors, officers, agents, superintendents or event secretary and the owner and/or lessor of the premises and any provider of services that are necessary to hold this event and any employees or volunteers of the aforementioned parties, and any AKC approved judge, judging at this event, harmless from any claim for loss or injury which may be alleged to have been caused directly or indirectly to any person or thing by the act of this dog while in or about the event premises or grounds or near any entrance thereto, and I (we) personally assume all responsibility and liability for any such claim; and I (we) further agree to hold the aforementioned parties harmless from any claim for loss, injury or damage to this dog.

Additionally, I (we) hereby assume the sole responsibility for and agree to indemnify, defend and save the aforementioned parties harmless from any and all loss and expense (including legal fees) by reason of the liability imposed by law upon any of the aforementioned parties for damage because of bodily injuries, including death at any time resulting therefrom, sustained by any person or persons, including myself (ourselves), or on account of damage to property, arising out of or in consequence of my (our) participation in this event, however such, injuries, death or property damage may be caused, and whether or not the same may have been caused or may be alleged to have been caused by the negligence of the aforementioned parties or any of their employees, agents, or any other persons.

I (WE) AGREE THAT ANY CAUSE OF ACTION, CONTROVERSY OR CLAIM ARISING OUT OF OR RELATED TO THE ENTRY, EXHIBITION OR ATTENDANCE AT THE EVENT BETWEEN THE AKC AND THE EVENT-GIVING CLUB (UNLESS OTHERWISE STATED IN ITS PREMIUM LIST) AND MYSELF (OURSELVES) OR AS TO THE CONSTRUCTION, INTERPRETATION AND EFFECT OF THIS AGREEMENT SHALL BE SETTLED BY ARBITRATION PURSUANT TO THE APPLICABLE RULES OF THE AMERICAN ARBITRATION ASSOCIATION. HOWEVER, PRIOR TO ARBITRATION ALL APPLICABLE AKC BYLAWS, RULES, REGULATIONS AND PROCEDURES MUST FIRST BE FOLLOWED AS SET FORTH IN THE AKC CHARTER AND BYLAWS, RULES, REGULATIONS, PUBLISHED POLICIES AND GUIDELINES. 1/1/19



Please visit

<https://www.instagram.com/jackbradshawdogshows/>

for new information, updates, weather conditions, exhibitor information, etc."



Please like our page at

<https://www.facebook.com/JackBradshawDogShows>

for new information, updates, weather conditions, exhibitor information, etc."

OFFICIAL AMERICAN KENNEL CLUB ENTRY FORM

ALL BREED DOG SHOWS, OBEDIENCE TRIALS AND RALLY TRIALS of the

- Friday, May 22, 2026 San Gabriel Valley Kennel Club**
- Saturday, May 23, 2026 South Bay Kennel Club**
- Sunday, May 24, 2026 Antelope Valley Kennel Club**
- Monday, May 25, 2026 Los Encinos Kennel Club**

Rancho Mission Viejo Riding Park, 30753 Avenida La Pata, San Juan Capistrano, CA 92675

MAIL ENTRIES WITH FEES TO: JACK BRADSHAW, 320 Maple Avenue, Torrance, CA 90503

MAKE CHECKS payable to JACK BRADSHAW. FAX (323) 727-2949; www.jbradshaw.com;

ENTRIES must be received by the Superintendent not later than **NOON, WED MAY 6, 2026 PT.**

First Entry of a dog at this show **\$39.00**, Each additional entry of the same dog **\$31.00**

Puppy Class 6-9 and 9-12, Bred by Exhibitor Class **\$31.00**, Junior Showmanship **\$20.00**

Entry must be signed at the bottom by the owner or owner's duly authorized agent, otherwise entry cannot be accepted. I enclose \$ _____ for entry fees.

BREED		VARIETY 1		SEX
DOG 2 3 SHOW CLASS		CLASS 3 DIVISION Weight, color, etc.		
ADDITIONAL CLASSES	OBEDIENCE CLASS (Jump Height)	RALLY CLASS (Jump Height)	JR. SHOWMANSHIP CLASS	
NAME OF (See Back) JUNIOR HANDLER (if any)				JR. HANDLER NUMBER
FULL NAME OF DOG				
<input type="checkbox"/> AKC® NO. <input type="checkbox"/> PAL NO. <input type="checkbox"/> FOREIGN REG NO & COUNTRY		Enter number here	DATE OF BIRTH	
			PLACE OF BIRTH (list country) Do not print the above in the catalog.	
BREEDER				
SIRE				
DAM				

ACTUAL OWNER(S) _____
4 (Please Print)

OWNER'S ADDRESS _____

CITY _____ STATE _____ ZIP _____

I CERTIFY that I am the actual owner of the dog, or that I am the duly authorized agent of the actual owner whose name I have entered above. In consideration of the acceptance of this entry, I (we) agree to abide by the rules and regulations of the American Kennel Club in effect at the time of this entry, and by any additional rules and regulations appearing in the premium list for this event, and further agree to be bound by the "Agreement" printed on the reverse side of this entry form. I (we) certify and represent that the dog entered is not a hazard to persons or other dogs. This entry is submitted for acceptance on the foregoing representation and Agreement. I (we) agree to conduct myself (ourselves) in accordance with all such Rules and Regulations (including all provisions applying to discipline) and to abide by any decisions made in accord with them.

Signature of owner or his agent
 duly authorized to make this entry:

Daytime Telephone _____ Email _____

Owner/Handler Eligible? Yes No

Emergency Contact _____ Phone _____

AKC Rules, Regulations, Policies and Guidelines are available on the American Kennel Club Web site, www.akc.org

AGREEMENT

I (we) agree that the club holding this event has the right to refuse this entry for cause which the club shall deem sufficient. In consideration of the acceptance of this entry and of the holding of this event and of the opportunity to have the dog judged and to win prizes, ribbons, or trophies, I (we) agree to hold the AKC, the event-giving club, their members, directors, governors, officers, agents, superintendents or event secretary and the owner and/or lessor of the premises and any provider of services that are necessary to hold this event and any employees or volunteers of the aforementioned parties, and any AKC approved judge, judging at this event, harmless from any claim for loss or injury which may be alleged to have been caused directly or indirectly to any person or thing by the act of this dog while in or about the event premises or grounds or near any entrance thereto, and I (we) personally assume all responsibility and liability for any such claim; and I (we) further agree to hold the aforementioned parties harmless from any claim for loss, injury or damage to this dog.

Additionally, I (we) hereby assume the sole responsibility for and agree to indemnify, defend and save the aforementioned parties harmless from any and all loss and expense (including legal fees) by reason of the liability imposed by law upon any of the aforementioned parties for damage because of bodily injuries, including death at any time resulting therefrom, sustained by any person or persons, including myself (ourselves), or on account of damage to property, arising out of or in consequence of my (our) participation in this event, however such, injuries, death or property damage may be caused, and whether or not the same may have been caused or may be alleged to have been caused by the negligence of the aforementioned parties or any of their employees, agents, or any other persons.

I (WE) AGREE THAT ANY CAUSE OF ACTION, CONTROVERSY OR CLAIM ARISING OUT OF OR RELATED TO THE ENTRY, EXHIBITION OR ATTENDANCE AT THE EVENT BETWEEN THE AKC AND THE EVENT-GIVING CLUB (UNLESS OTHERWISE STATED IN ITS PREMIUM LIST) AND MYSELF (OURSELVES) OR AS TO THE CONSTRUCTION, INTERPRETATION AND EFFECT OF THIS AGREEMENT SHALL BE SETTLED BY ARBITRATION PURSUANT TO THE APPLICABLE RULES OF THE AMERICAN ARBITRATION ASSOCIATION. HOWEVER, PRIOR TO ARBITRATION ALL APPLICABLE AKC BYLAWS, RULES, REGULATIONS AND PROCEDURES MUST FIRST BE FOLLOWED AS SET FORTH IN THE AKC CHARTER AND BYLAWS, RULES, REGULATIONS, PUBLISHED POLICIES AND GUIDELINES. 1/1/19



Please visit

<https://www.instagram.com/jackbradshawdogshows/>

for new information, updates, weather conditions, exhibitor information, etc."



Please like our page at

<https://www.facebook.com/JackBradshawDogShows>

for new information, updates, weather conditions, exhibitor information, etc."

OFFICIAL AMERICAN KENNEL CLUB ENTRY FORM

ALL BREED DOG SHOWS, OBEDIENCE TRIALS AND RALLY TRIALS of the

- Friday, May 22, 2026 San Gabriel Valley Kennel Club**
- Saturday, May 23, 2026 South Bay Kennel Club**
- Sunday, May 24, 2026 Antelope Valley Kennel Club**
- Monday, May 25, 2026 Los Encinos Kennel Club**

Rancho Mission Viejo Riding Park, 30753 Avenida La Pata, San Juan Capistrano, CA 92675

MAIL ENTRIES WITH FEES TO: JACK BRADSHAW, 320 Maple Avenue, Torrance, CA 90503

MAKE CHECKS payable to JACK BRADSHAW. FAX (323) 727-2949; www.jbradshaw.com;

ENTRIES must be received by the Superintendent not later than **NOON, WED MAY 6, 2026 PT.**

First Entry of a dog at this show **\$39.00**, Each additional entry of the same dog **\$31.00**

Puppy Class 6-9 and 9-12, Bred by Exhibitor Class **\$31.00**, Junior Showmanship **\$20.00**

Entry must be signed at the bottom by the owner or owner's duly authorized agent, otherwise entry cannot be accepted. I enclose \$ _____ for entry fees.

BREED		VARIETY 1		SEX
DOG 2 3 SHOW CLASS		CLASS 3 DIVISION Weight, color, etc.		
ADDITIONAL CLASSES	OBEDIENCE CLASS (Jump Height)	RALLY CLASS (Jump Height)	JR. SHOWMANSHIP CLASS	
NAME OF (See Back) JUNIOR HANDLER (if any)			JR. HANDLER NUMBER	
FULL NAME OF DOG				
<input type="checkbox"/> AKC® NO. <input type="checkbox"/> PAL NO. <input type="checkbox"/> FOREIGN REG NO & COUNTRY		Enter number here	DATE OF BIRTH	
			PLACE OF BIRTH (list country) Do not print the above in the catalog.	
BREEDER				
SIRE				
DAM				
ACTUAL OWNER(S) _____ <small>4</small> (Please Print)				
OWNER'S ADDRESS _____				
CITY _____ STATE _____ ZIP _____				

I CERTIFY that I am the actual owner of the dog, or that I am the duly authorized agent of the actual owner whose name I have entered above. In consideration of the acceptance of this entry, I (we) agree to abide by the rules and regulations of the American Kennel Club in effect at the time of this entry, and by any additional rules and regulations appearing in the premium list for this event, and further agree to be bound by the "Agreement" printed on the reverse side of this entry form. I (we) certify and represent that the dog entered is not a hazard to persons or other dogs. This entry is submitted for acceptance on the foregoing representation and Agreement. I (we) agree to conduct myself (ourselves) in accordance with all such Rules and Regulations (including all provisions applying to discipline) and to abide by any decisions made in accord with them.

Signature of owner or his agent
duly authorized to make this entry:

Daytime Telephone _____ Email _____

Owner/Handler Eligible? Yes No

Emergency Contact _____ Phone _____

AKC Rules, Regulations, Policies and Guidelines are available on the American Kennel Club Web site, www.akc.org

AGREEMENT

I (we) agree that the club holding this event has the right to refuse this entry for cause which the club shall deem sufficient. In consideration of the acceptance of this entry and of the holding of this event and of the opportunity to have the dog judged and to win prizes, ribbons, or trophies, I (we) agree to hold the AKC, the event-giving club, their members, directors, governors, officers, agents, superintendents or event secretary and the owner and/or lessor of the premises and any provider of services that are necessary to hold this event and any employees or volunteers of the aforementioned parties, and any AKC approved judge, judging at this event, harmless from any claim for loss or injury which may be alleged to have been caused directly or indirectly to any person or thing by the act of this dog while in or about the event premises or grounds or near any entrance thereto, and I (we) personally assume all responsibility and liability for any such claim; and I (we) further agree to hold the aforementioned parties harmless from any claim for loss, injury or damage to this dog.

Additionally, I (we) hereby assume the sole responsibility for and agree to indemnify, defend and save the aforementioned parties harmless from any and all loss and expense (including legal fees) by reason of the liability imposed by law upon any of the aforementioned parties for damage because of bodily injuries, including death at any time resulting therefrom, sustained by any person or persons, including myself (ourselves), or on account of damage to property, arising out of or in consequence of my (our) participation in this event, however such, injuries, death or property damage may be caused, and whether or not the same may have been caused or may be alleged to have been caused by the negligence of the aforementioned parties or any of their employees, agents, or any other persons.

I (WE) AGREE THAT ANY CAUSE OF ACTION, CONTROVERSY OR CLAIM ARISING OUT OF OR RELATED TO THE ENTRY, EXHIBITION OR ATTENDANCE AT THE EVENT BETWEEN THE AKC AND THE EVENT-GIVING CLUB (UNLESS OTHERWISE STATED IN ITS PREMIUM LIST) AND MYSELF (OURSELVES) OR AS TO THE CONSTRUCTION, INTERPRETATION AND EFFECT OF THIS AGREEMENT SHALL BE SETTLED BY ARBITRATION PURSUANT TO THE APPLICABLE RULES OF THE AMERICAN ARBITRATION ASSOCIATION. HOWEVER, PRIOR TO ARBITRATION ALL APPLICABLE AKC BYLAWS, RULES, REGULATIONS AND PROCEDURES MUST FIRST BE FOLLOWED AS SET FORTH IN THE AKC CHARTER AND BYLAWS, RULES, REGULATIONS, PUBLISHED POLICIES AND GUIDELINES. 1/1/19



Please visit

<https://www.instagram.com/jackbradshawdogshows/>

for new information, updates, weather conditions, exhibitor information, etc."



Please like our page at

<https://www.facebook.com/JackBradshawDogShows>

for new information, updates, weather conditions, exhibitor information, etc."